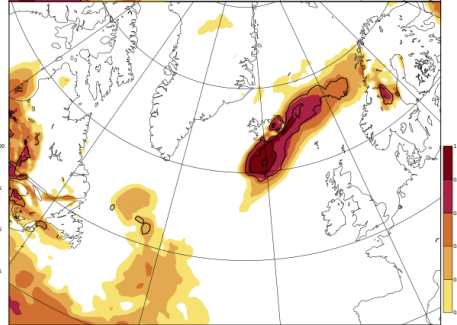
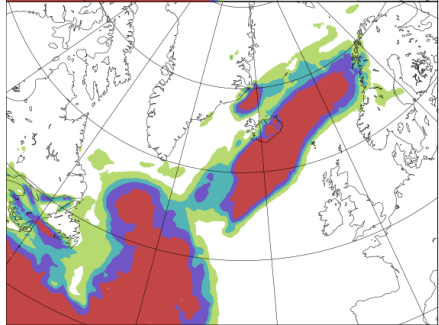
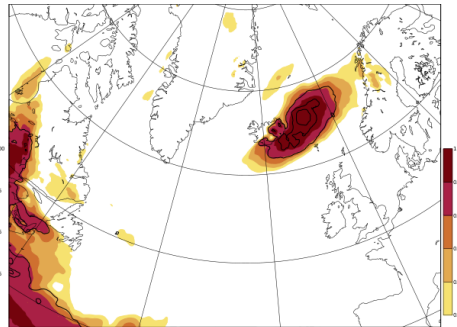
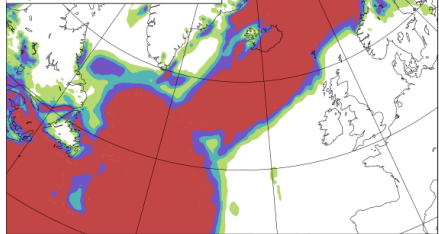


EC-ENS: Likur (%) að 10m vindhviða:
V-Upp: >20 m/s, V-N: >25 m/s síðustu 24h.
EFI og SOT síð. 24h: H-U: F1.0m, H-N: FG10m.
fr: mán 25.02.2019 12Z
VT: þri 26.02.2019 00-24Z (+12-36 h)



Conservative and
progressive
forecasting, all in one.

IMO

Elín Björk Jónasdóttir – elin@vedur.is
Group leader of weather services

Using ECMWF Forecasts, June 2019

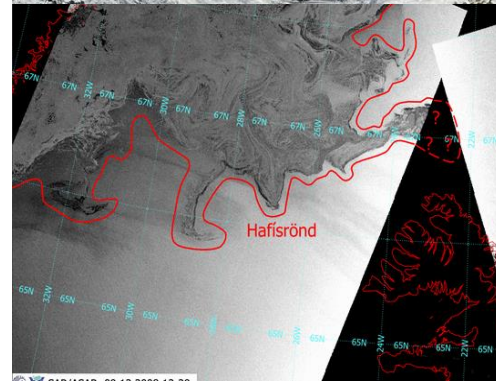
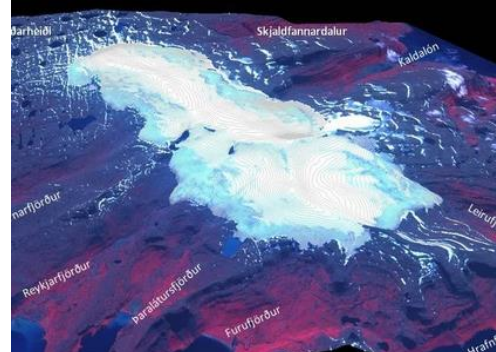


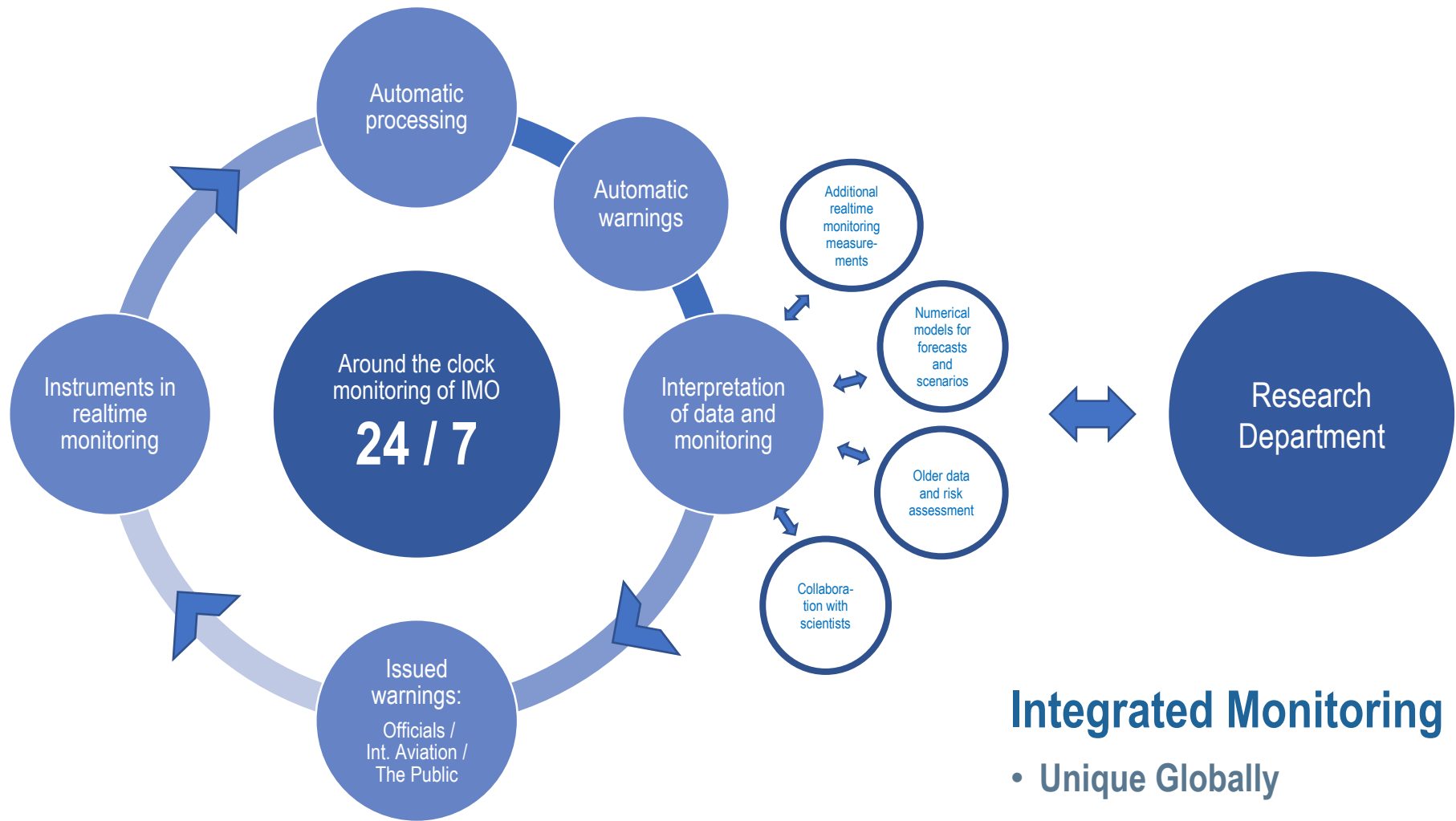
Natural hazard and
weather service

Observations and
data collection

Processing and
research

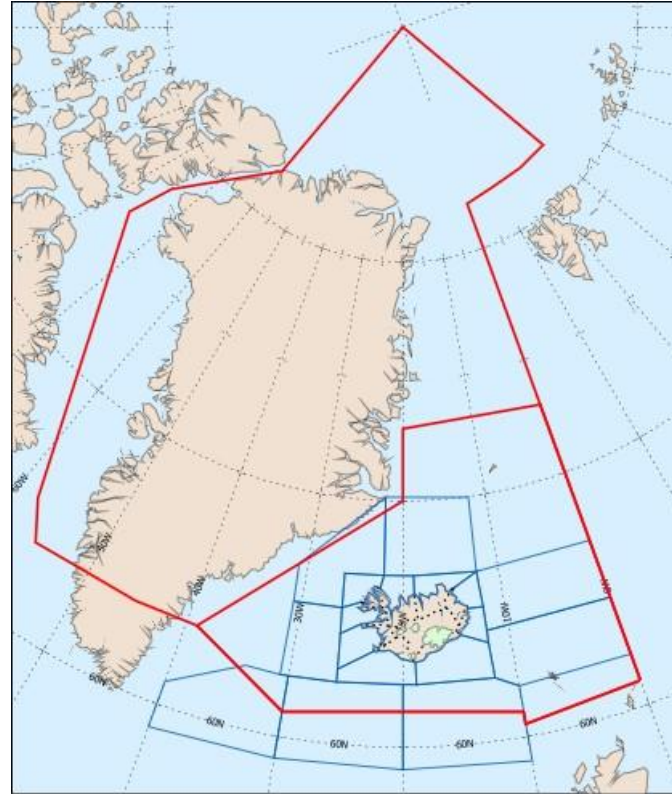
Data
preservation





An Extensive Service Area

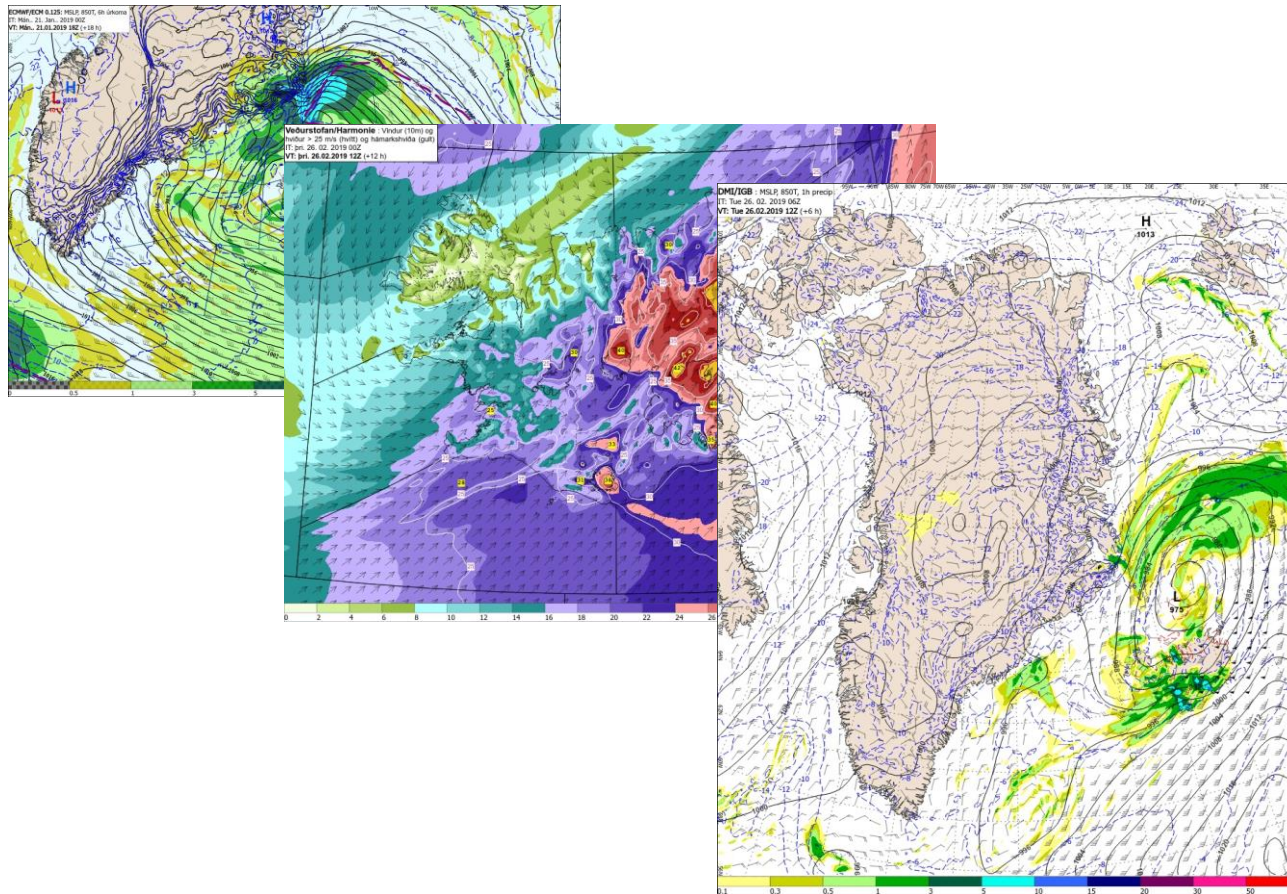
- IMO monitors and issues forecasts for land and sea, 200 NM economical zone, as well as aviation weather services for Reykjavík CTA and Reykjavík FIR
- IMO is a “State Volcano Observatory” nominated by the Icelandic Transport Authority and The International Civil Aviation Organization (ICAO)



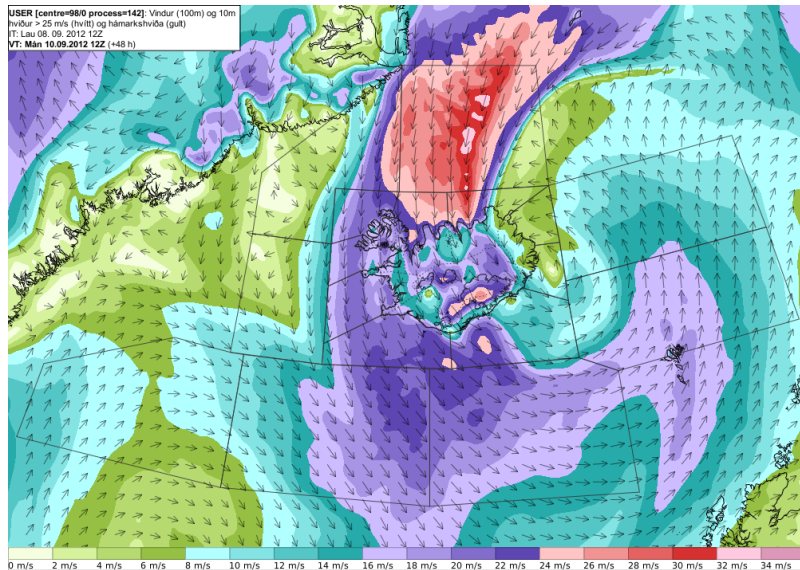
Conservative forecasts

- Shortage of staff has been ongoing for decades
- Text forecasts still the main product, for 11 areas of Iceland for the next 48 hours, long term forecast (up to 7 days), overview, media content, marine forecasts for the sea and deep sea banks, remarks for specific weather
- TAF and SIGMET production, Low level flight conditions, significant weather charts,
- Sea ice maps and monitoring (seasonal)
- TAFs – 4 international airports and 9 domestic airports

Conservative forecasting

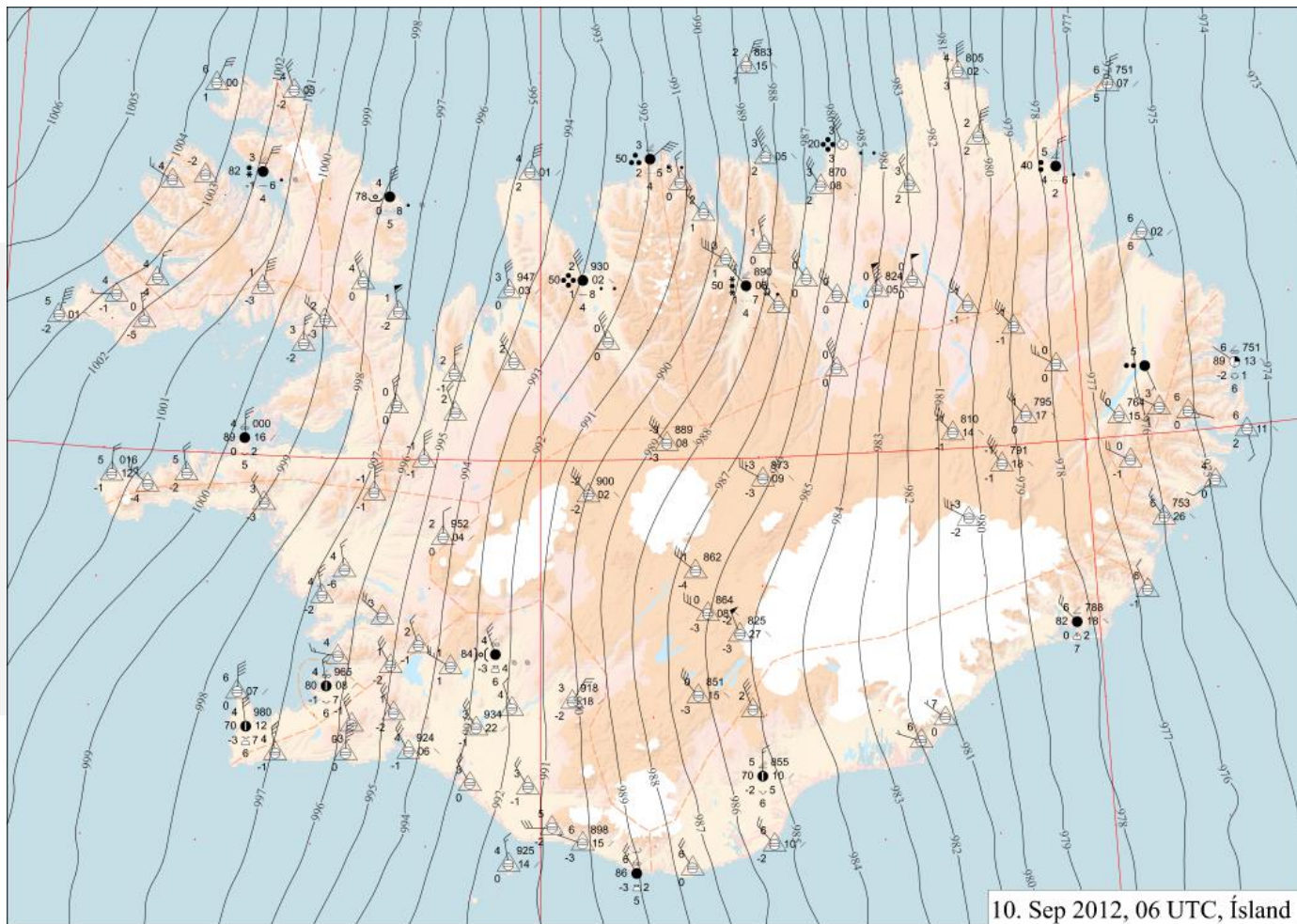


High impact weather





IMO

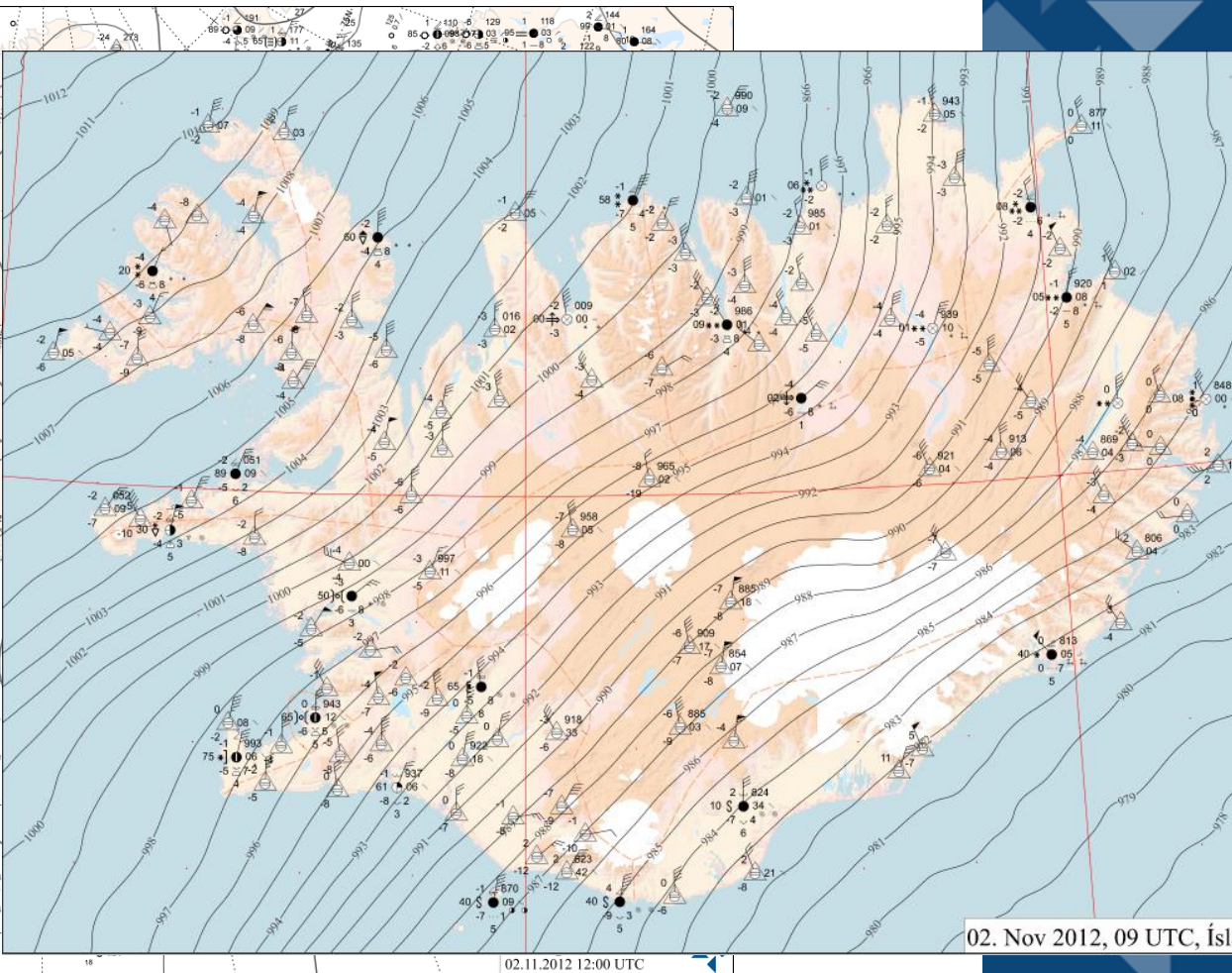
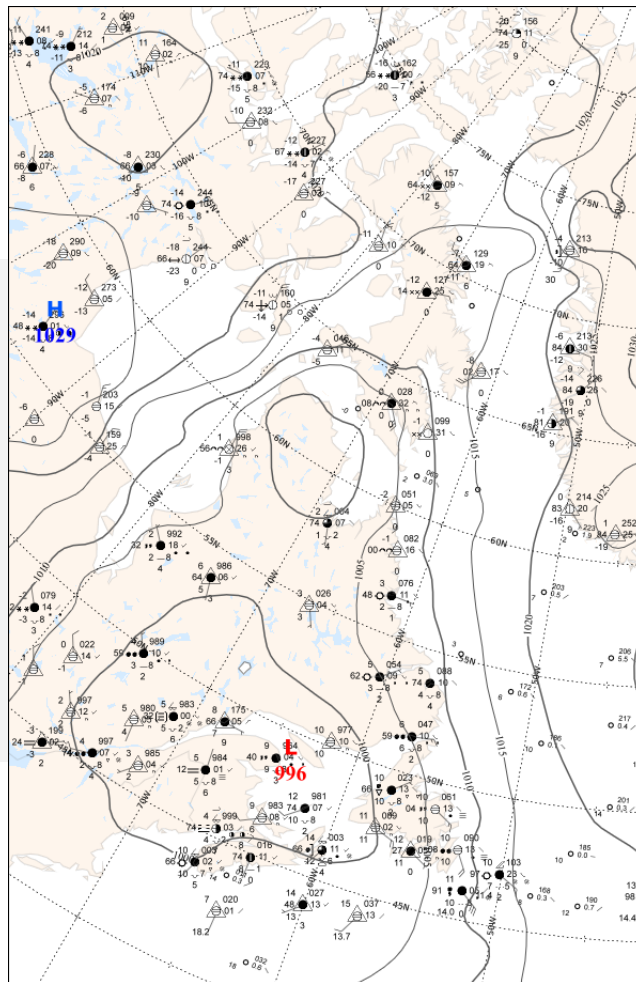


10. Sep 2012, 06 UTC, Ísland

November 2nd 2012



IMO



02. Nov 2012, 09 UTC, Ís

02.11.2012 12:00 UTC

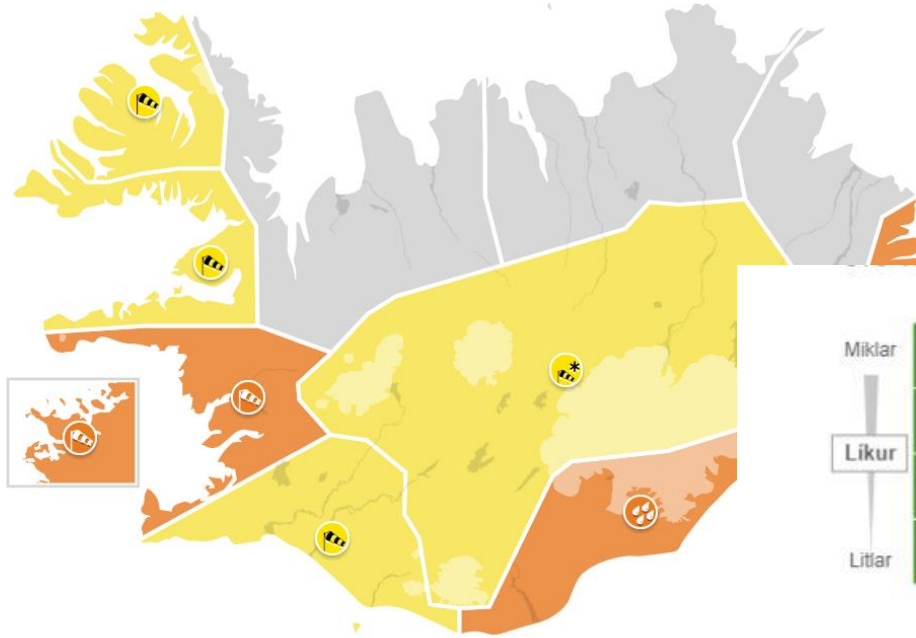
Progressive warnings

- With the high impact weather events in 2012 the first drafts of a new colour coded warning system was established.
- By the time the system went into development WMO documents 1150 and 1129 regarding impact based warning systems had been released and the system was based on an impact matrix, with probability on one axis and impact on the other.
- A new system with 5 day warnings, probability and impact made for a fairly difficult introductory phase.

Impact oriented forecasting

Home > Alerts

Alerts

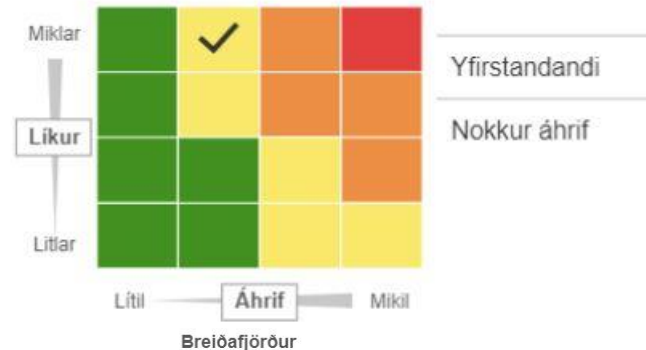


Reykjavik area

 SE severe gale (Orange condition) ^
11 Jan. at 16:30 – 19:30
SE 18-25 m/s. Travel disruption is expected and potentially damaging winds.
[More +](#)

South

 SE severe gale (Yellow condition) ^

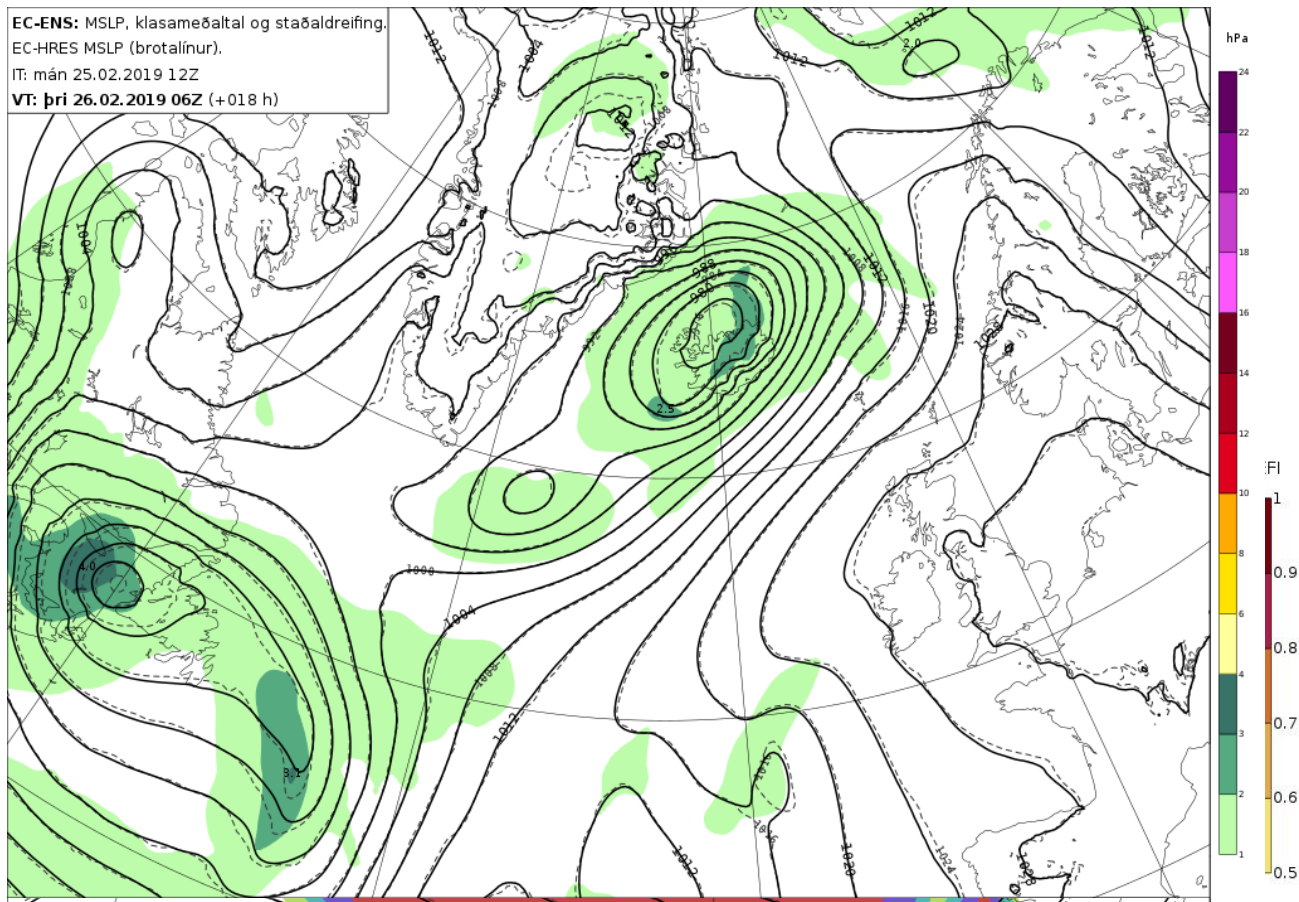


Ensamble foreacsts

- Even though Icelandic forecasters go to training courses at the ECMWF often the knowledge stops with them when they come home and the traditional methods of forecasting continues.
- With the new warning system each forecaster has gradually started to use products from the ENS
- Started with the EFI and SOT products
- Severe jumps in the deterministic forecast forced us to look at the spread

Ensamble forecasts

EC-ENS: MSLP, klasameðaltal og staðaldreifing.
EC-HRES MSLP (brotalínur).
IT: mán 25.02.2019 12Z
VT: þri 26.02.2019 06Z (+018 h)

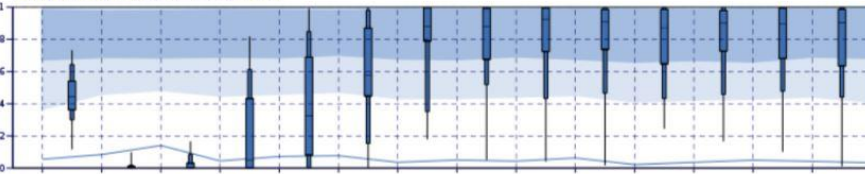


Spárit

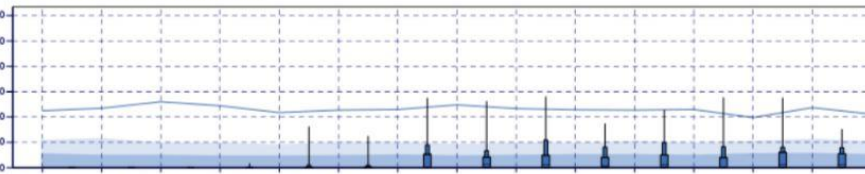
Spárit

EC-ENS Meteogram Station: Reykjavík
64.03°N 21.9°W (ENS land point)
Tuesday 4 June 2019 12 UTC

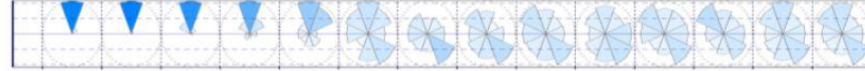
Daily mean of total cloud cover



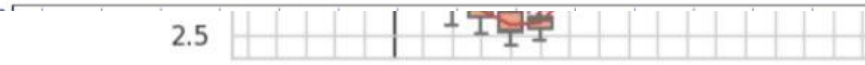
Total precipitation (mm/24hr)



Daily distribution of 10m Wind Direction

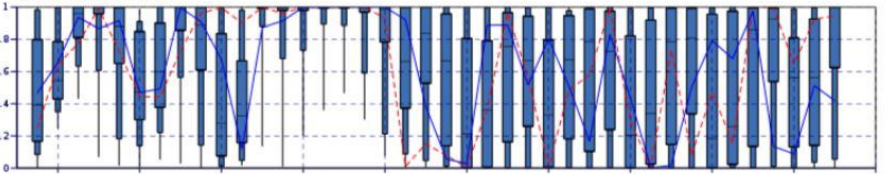


Daily mean of 10m wind speed (m/s)

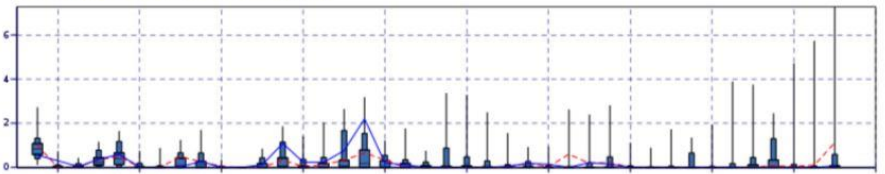


EC-ENS Meteogram Station: Reykjavík
64.03°N 21.9°W (ENS land point)
Wednesday 22 May 2019 12 UTC

Total cloud cover



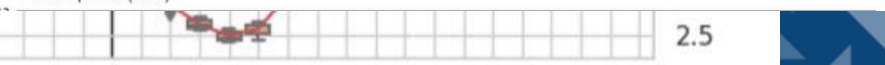
Total precipitation (last 6 hours) (m)



10 metre wind direction



Wind speed (m/s)



2.5

21

00

03

06

09

12

15

18

05.06

Gildistími

21

00

03

06

09

12

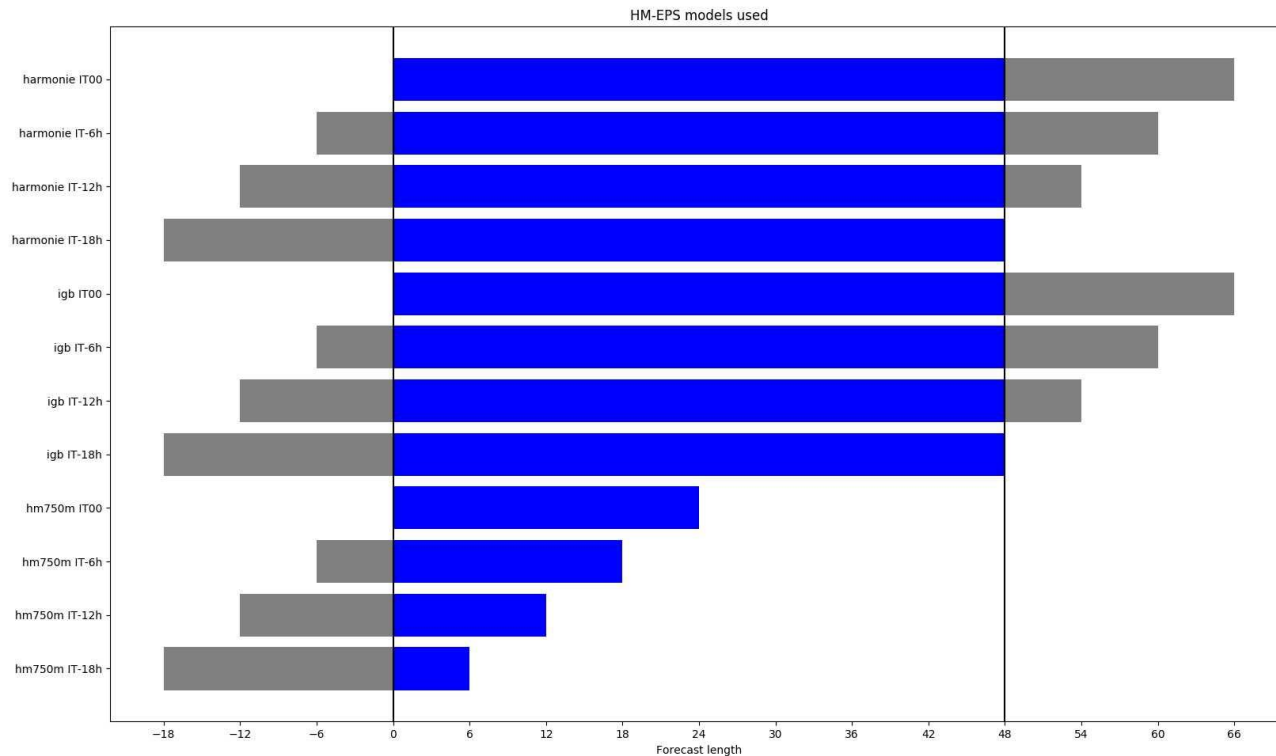
15

18

06.06

2.5

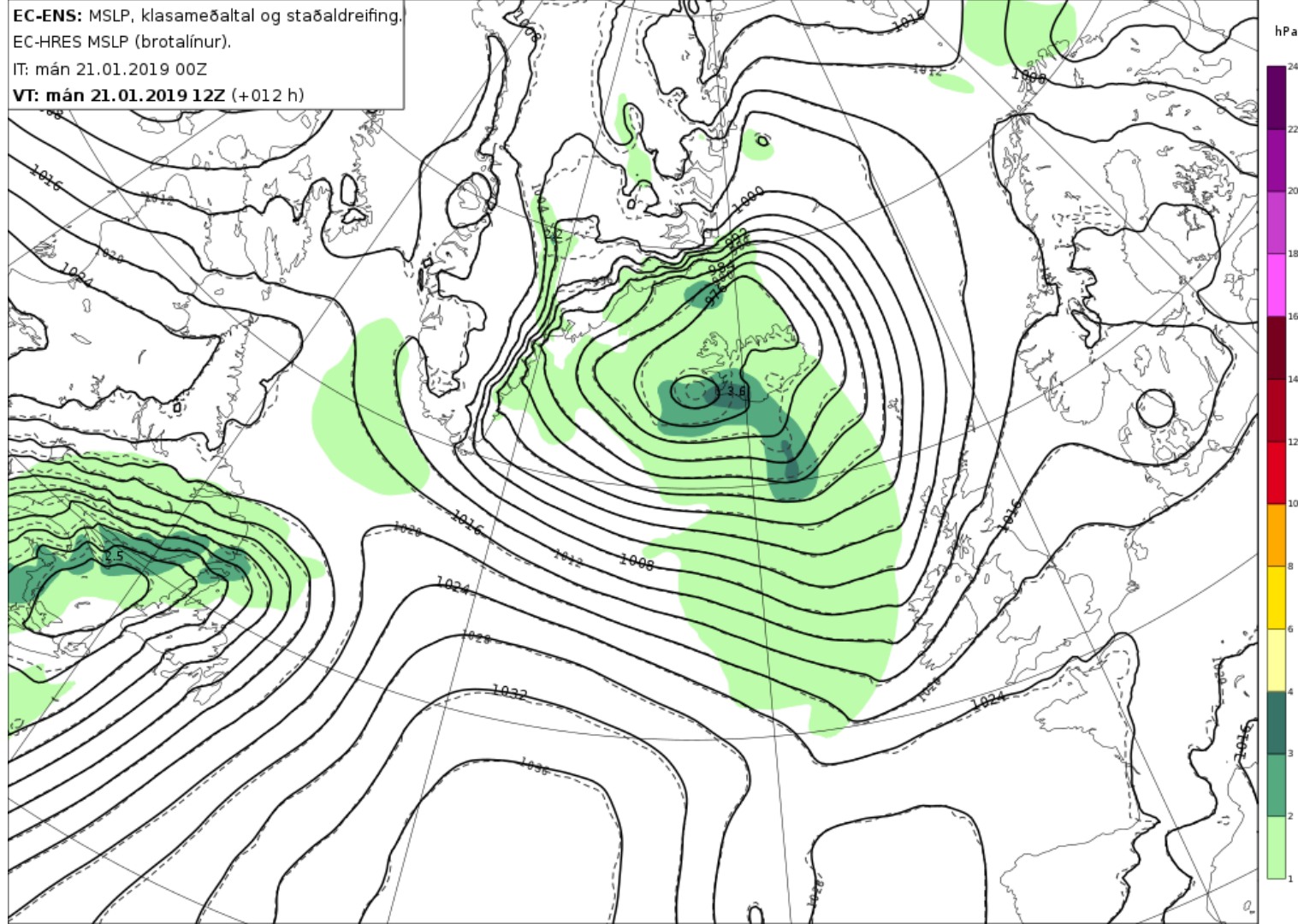
Ensamble forecasts



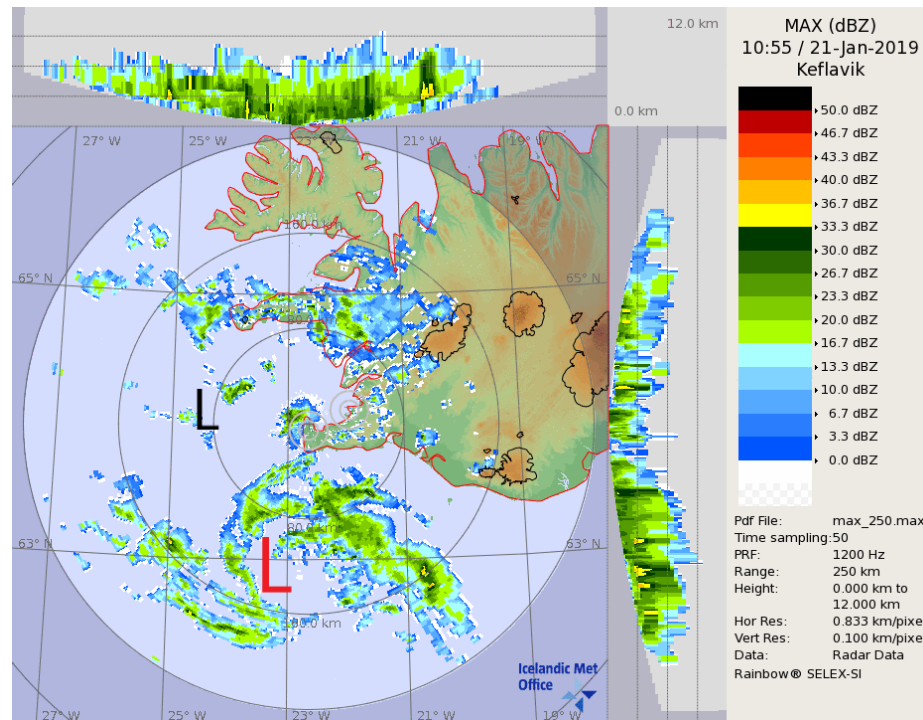
Forecast busts

“The centre of the low pressure system is now visible 160 km SE of the forecasted position. The centre of the blizzard will therefore be to the south and east of Iceland. “

EC-ENS: MSLP, klasameðaltal og staðaldreifing,
EC-HRES MSLP (brotalínur).
IT: mán 21.01.2019 00Z
VT: mán 21.01.2019 12Z (+012 h)



Thank you for
your attention



IMO