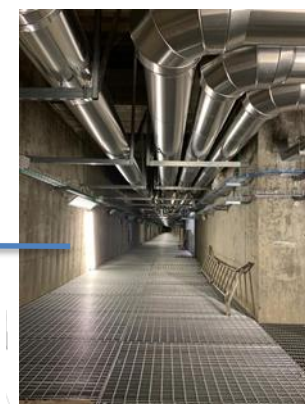
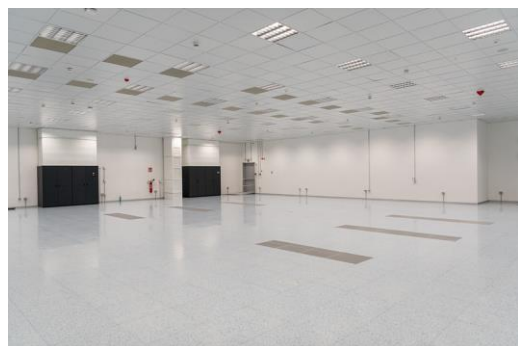


Bologna Data Centre

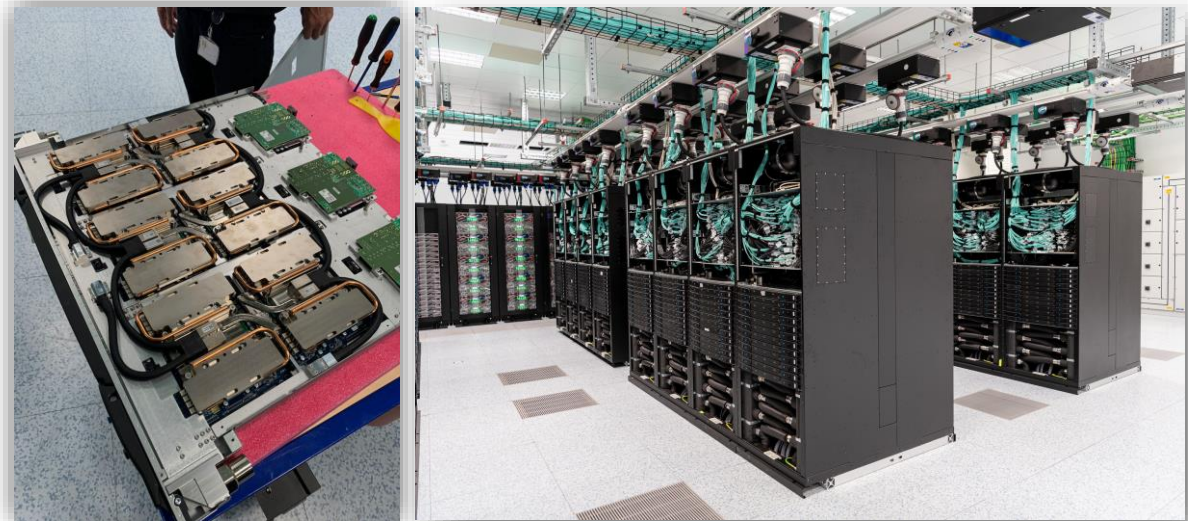
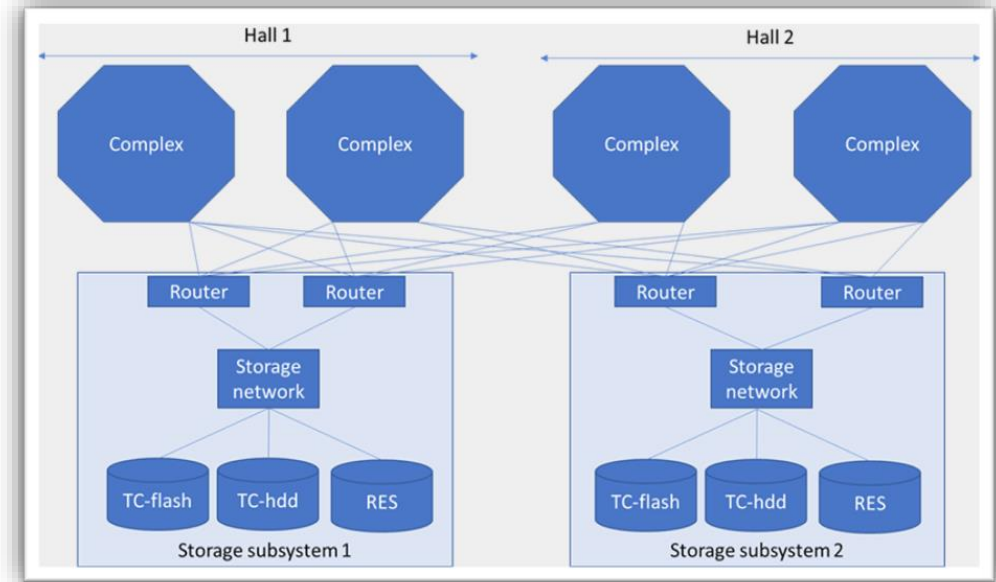


Bologna Data Centre



Atos BullSequana XH2000

- 4 Complexes
 - Two in each hall
 - Each Complex consists of two clusters:
 - Parallel:
 - ATOS XH2000 Water cooled racks
 - Arranged in 5 “cells”, 4 racks per cell
 - IB HDR Fat Tree in each cell. Each cell connected to every other cell
 - 1872 nodes for parallel compute
 - AMD Rome 64 core processors
 - General Purpose
 - 112 nodes for general purpose use
 - More memory, local SSD
- One Slurm scheduler in each complex



Storage Subsystem

- Global Lustre parallel filesystems
 - Disk and Solid-State storage
 - DDN
 - ES7900 & ES200NV appliances
 - Separate file systems for time critical operations and research
 - Time Critical Storage
 - 2 Lustre SSD 700TB file systems for production
 - 2 Lustre HDD 5PB file systems for short term storage
 - Research
 - 6 Lustre HDD 13PB file systems
 - Filesystems available to all clusters
- NFS storage for libraries per complex
- Home and project from NetApp and FreeNAS
- Long term storage in the MARS and ECFS archives

