

# ecCharts – latest updates

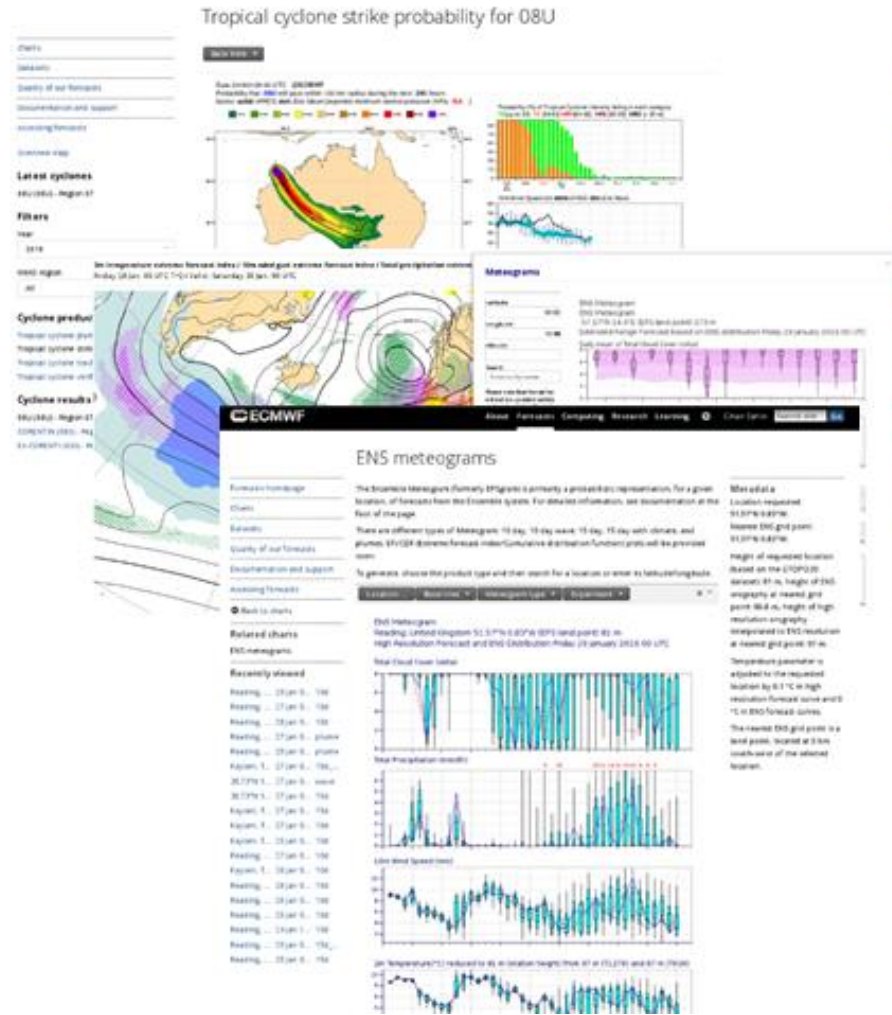
Please join me for a more detailed presentation on Friday  
at 11:15 (BST)

Cihan Sahin

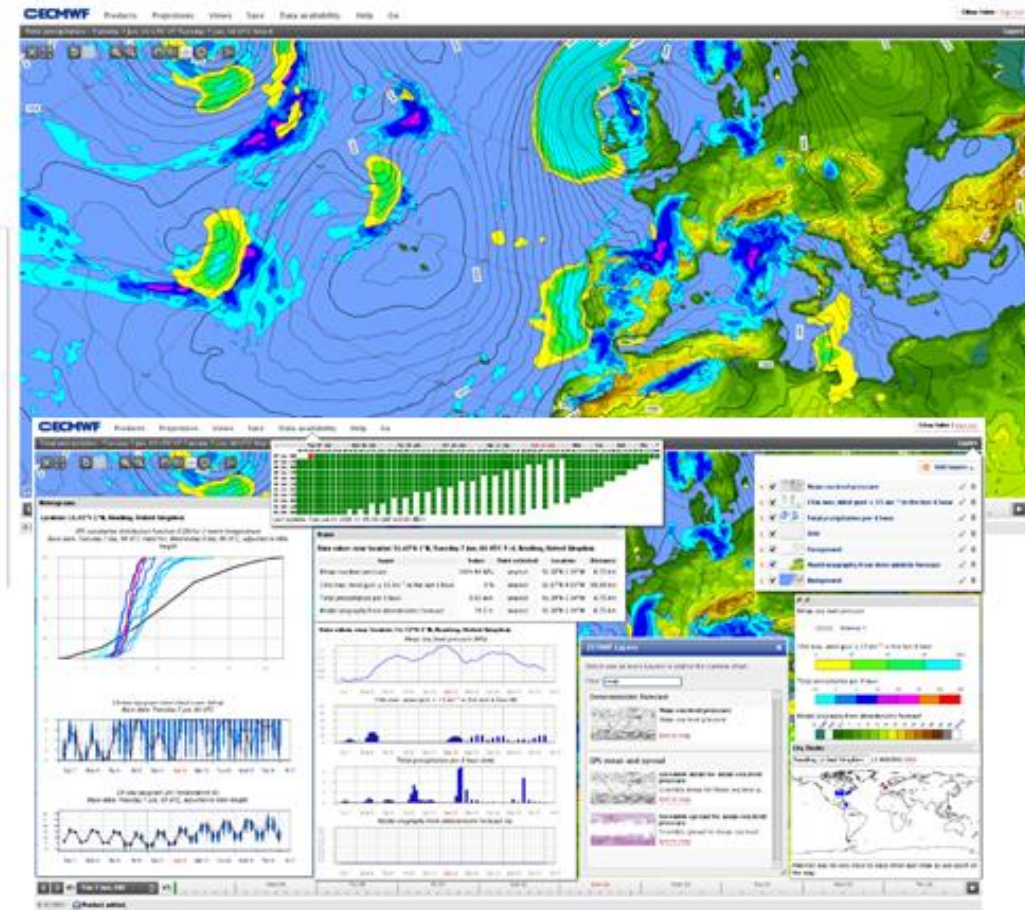
[Cihan.sahin@ecmwf.int](mailto:Cihan.sahin@ecmwf.int)

# ECMWF graphical products

Opencharts (Public access)



ecCharts (Restricted access)



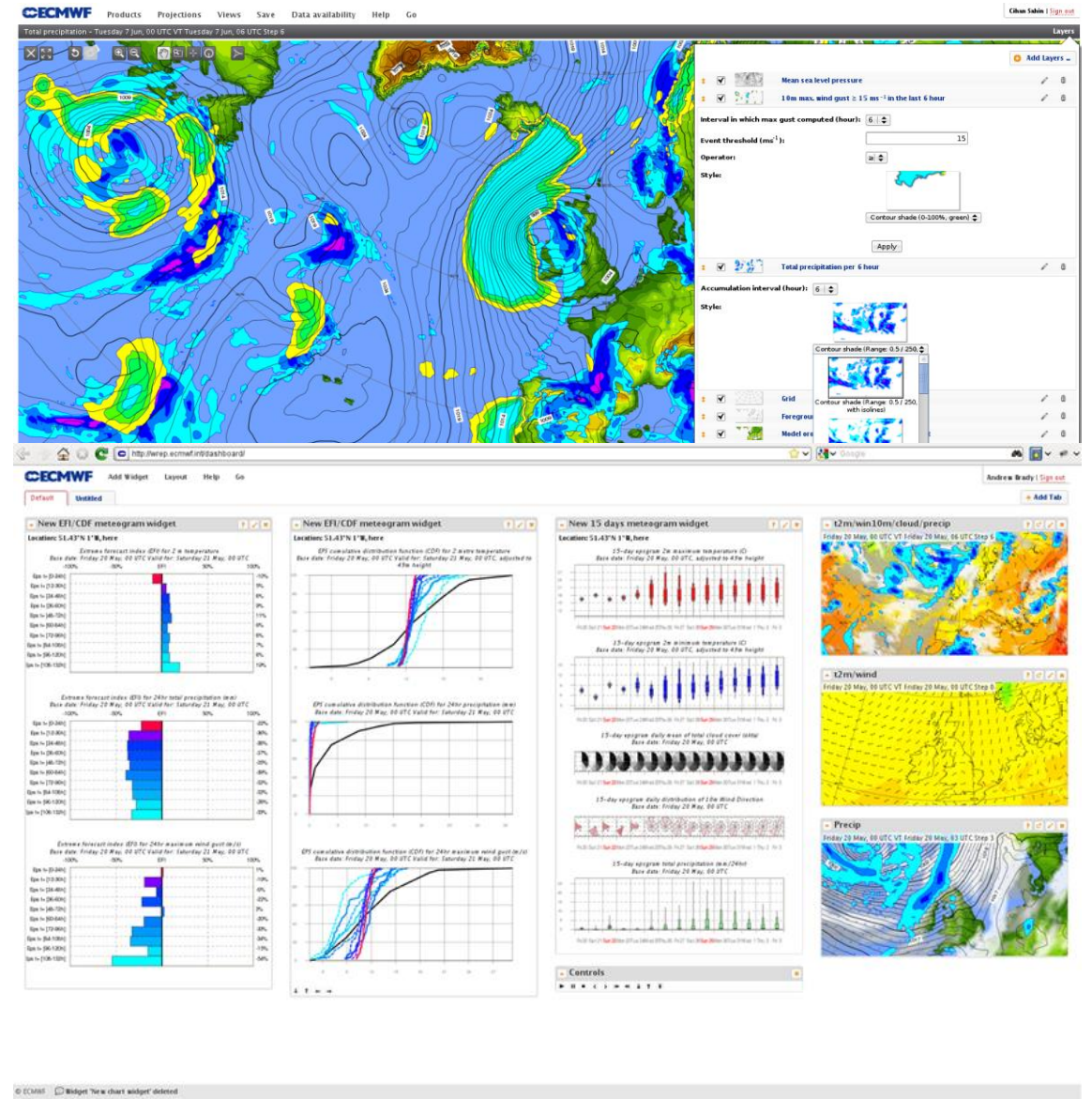
# ecCharts

Web based interactive application to inspect and visualize ECMWF medium-range and extended-range data.

- Rich and growing content
- Web based immediate access to charts
- Native data resolution
- Interactive features (overlay, zoom, pan, click, extract data information, ...)
- User controlled visualization
- Customisable parameters
- Download charts (through WMS)

URL

<https://www.ecmwf.int/en/forecasts/eccharts>



## Update procedure

- Product updates are done twice a year June and November.
- Requests are collected via meetings, requests coming to ECMWF documentation pages, e-mails, Training courses ...
- ecCharts will contain only parameters that are in [The Catalogue of ECMWF Real-Time Products](#)
- Full information available in ecCharts documentation pages.

You can follow the updates here;

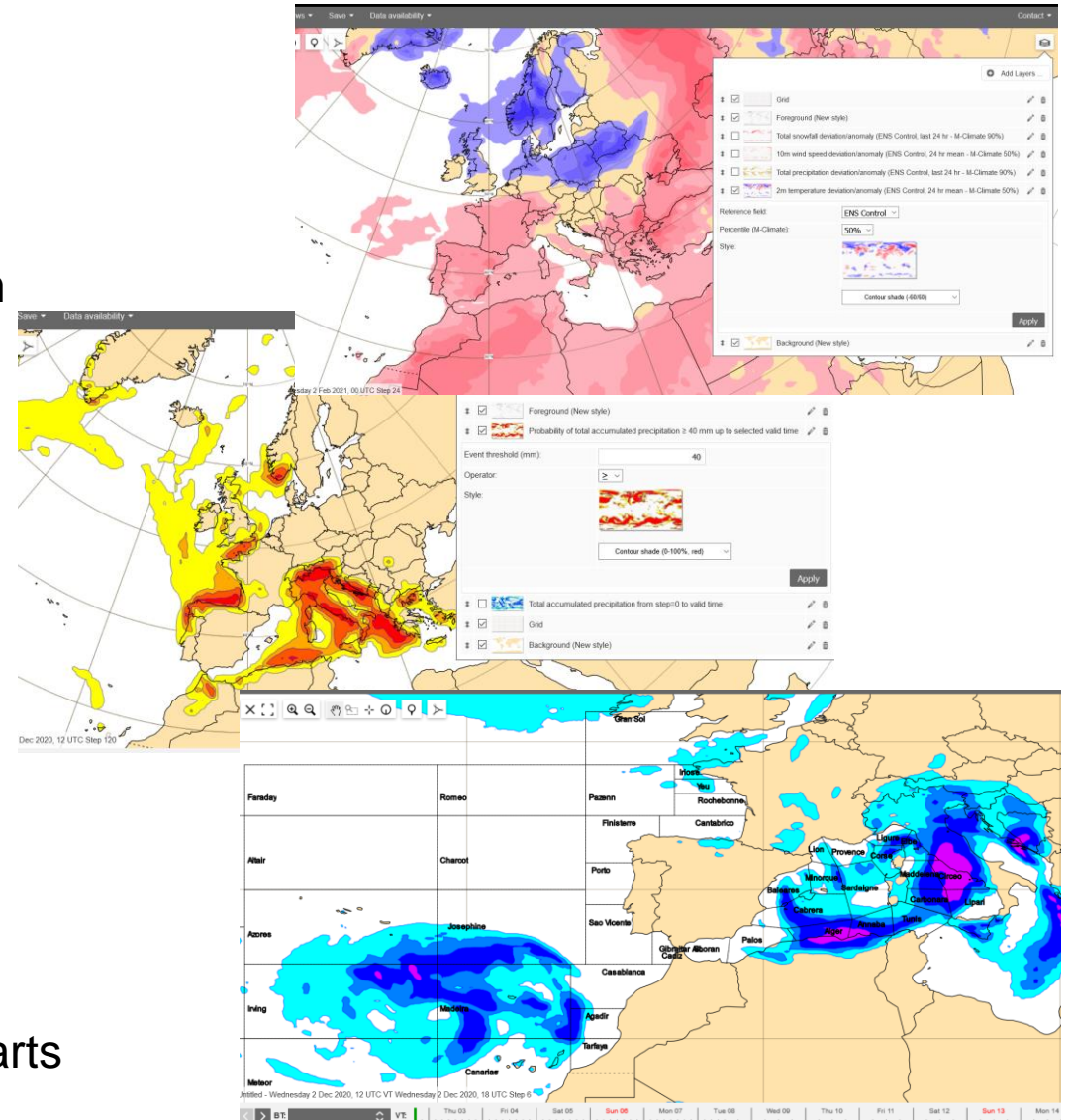
<https://software.ecmwf.int/wiki/display/ECCHARTS/Updates>

Please contact us if you wish to see additional parameters in ecCharts.

# 2020 updates

- Medium range deviation/anomalies (2mT, 10m wind speed, total precipitation, total snowfall)
- ENS probabilities (total accumulated precipitation, 10m wind speed)
- ENS mean/spread (10m wind, 2mT, 100m wind, total precipitation)
- 12 hourly steps are added to all Model climate layers
- 0-6 km shear
- Extended range CDF diagrams (Temperature, Precipitation)
- Maritime borders
- Sharing content between ecCharts users
  - Product, projection
  - Dashboard item or Dashboard tab

<https://confluence.ecmwf.int/display/ECCHARTS/ecCharts+updates+-+2020>



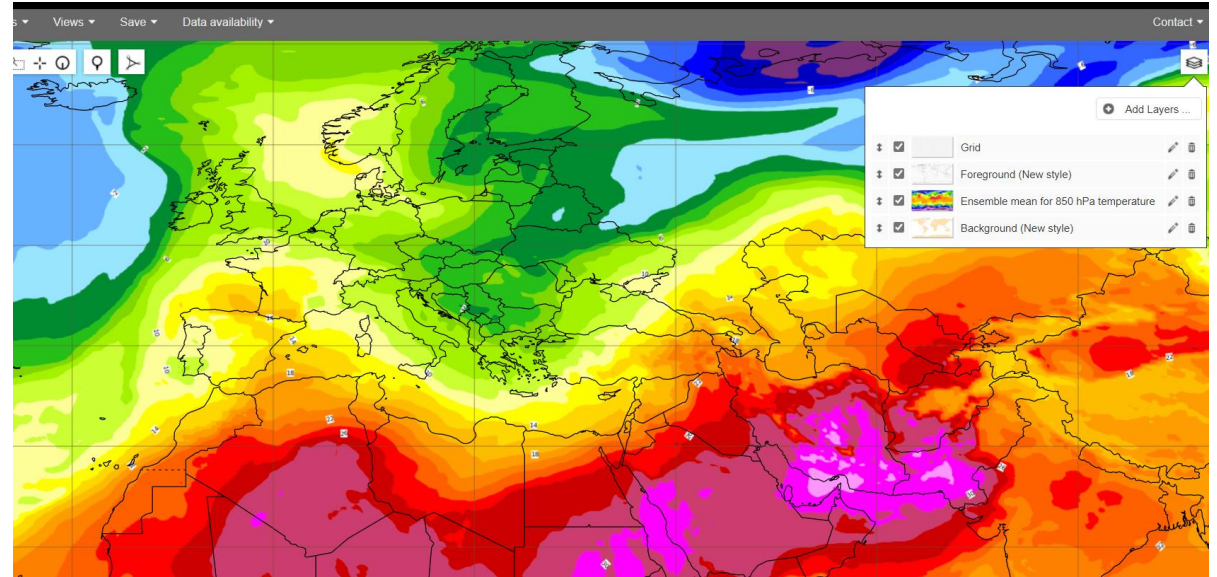
# 2021 updates

## More Ensemble layers

- Total accumulated precipitation mean
- 850 hPa temperature mean
- 850 hPa temperature probability
- 850 hPa temperature percentile

## Better identification of selected locations

- Height information on probe and time-series windows (Altitude and HRES/ENS/Extended range model orography)
- Lots of new styles as requested



Probe

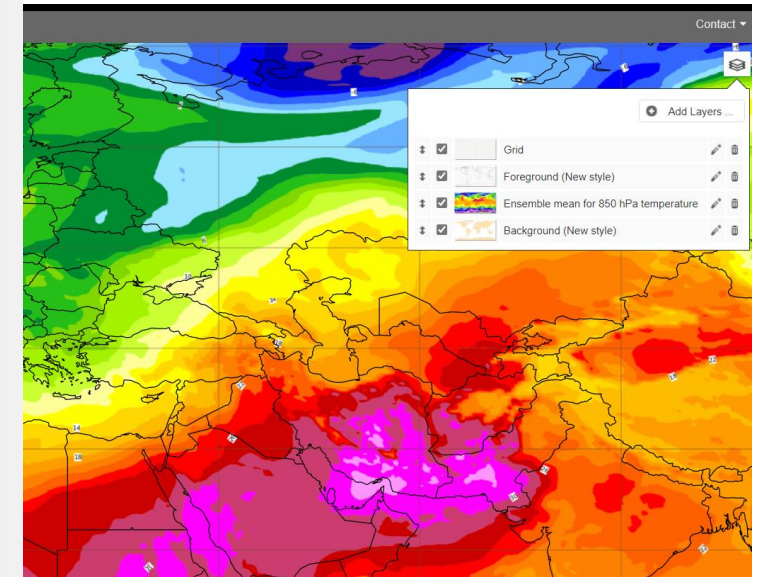
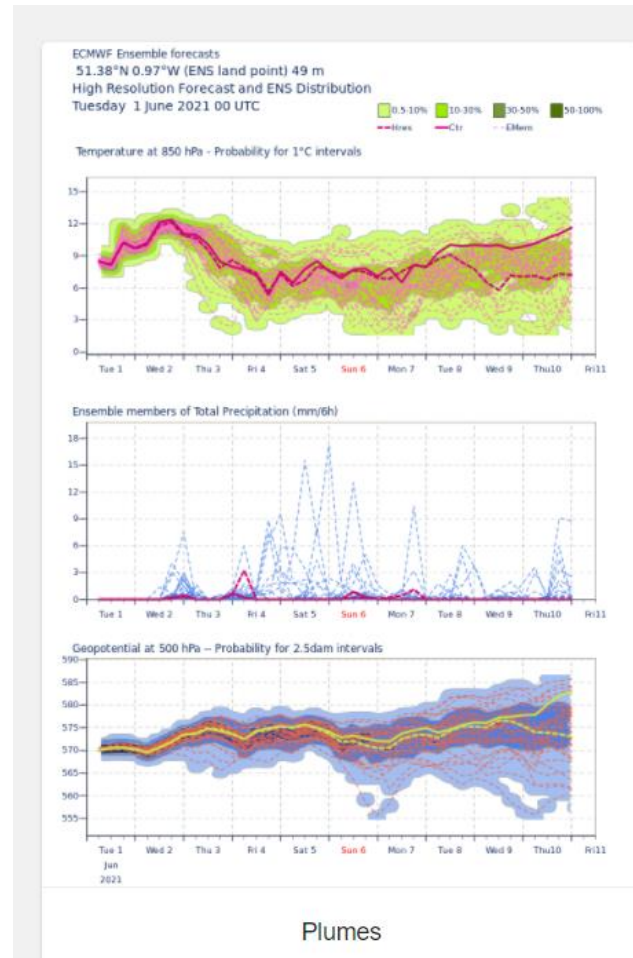
Data values near location 56.31°N 4.36°W, Wednesday 20 Jan, 00 UTC T+24  
Altitude (gtopo30): 474m HRES: 350m ENS: 362m ENS(Extended): 292m

**Altitude and Model orography**

Layer	Value	Point selected	Location	Distance
10m wind speed deviation/anomaly (ENS Control, 24 hr mean - M-Climate 50%)	-2 ms <sup>-1</sup>	nearest	56.3°N 4.43°W	4.26 km
2m temperature deviation/anomaly (ENS Mean, 24 hr mean - M-Climate 50%)	-2.7 °C	nearest	56.3°N 4.43°W	4.26 km
Total snowfall deviation/anomaly (ENS Control, last 24 hr - M-Climate 90%)	-3.38 mm	nearest	56.3°N 4.43°W	4.26 km
Total precipitation deviation/anomaly (ENS Control, last 24 hr - M-Climate 90%)	-15.95 mm	nearest	56.3°N 4.43°W	4.26 km

# 2021 updates (upcoming)

- Revision of point-based products, to respond requests
  - ENS Plumes extension to 15 days
  - Total accumulated precipitation
  - Storage and access improvements
- Infrastructure updates
  - Modern and future proof (Kubernetes)
- More content from ecCharts to Opencharts
- Any other content/functionality improvements requested by our users.



# Thanks !

- Please join me on Friday at 11:15 (BST) for details of;
  - How to share content with other users
  - Medium range deviation/anomaly layers
  - Extended range CDF diagrams
  - Upcoming changes & provide feedback
  
- Also please join us this afternoon at User Voice Corner (starting at 15:20 BST) at “Opencharts & ecCharts room”
  - Discussion & Feedback & Requests & Products