

UEF2021 Lightning Talk: Open Charts

Friday 4 June 2021

Becky Hemingway

User Outreach and Engagement Team



ECMWF – Open charts – free to access since October 2020

<https://apps.ecmwf.int/webapps/opencharts>

Home / Charts catalogue

Search products...

Range

- Medium (15 days)
- Extended (42 days)
- Long (Months)

Type

- Forecasts
- Verification

Component

- Surface
- Atmosphere

Product type

- High resolution forecast (HRES)

ECMWF | Charts

Home / Charts catalogue

Search products...

Range

- Medium (15 days)
- Extended (42 days)
- Long (Months)

Type

- Forecasts
- Verification

Component

- Surface
- Atmosphere

Product type

- High resolution forecast (HRES)
- Ensemble forecast (ENS)
- Combined (ENS + HRES)
- Extreme forecast index
- Point-based products

Parameters

Mean sea level pressure and wind speed

Mean sea level pressure and wind at 200

Multi-parameter EFI (24-h up to valid time)

EFI 2m temperature

EFI 2m minimum temperature

EFI 2m maximum temperature

EFI wind gust

EFI wind speed

EFI precipitation

EFI significant wave height

Search products...

Range

- Medium (15 days)
- Extended (42 days)
- Long (Months)

Type

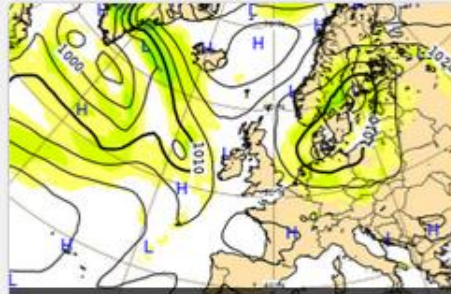
- Forecasts
- Verification

Component

- Surface
- Atmosphere

Product type

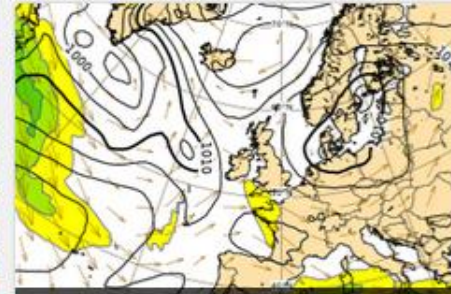
- High resolution forecast (HRES)
- Ensemble forecast (ENS)
- Combined (ENS + HRES)
- Extreme forecast index
- Point-based products



Mean sea level pressure and wind speed



Temperature and 30m winds



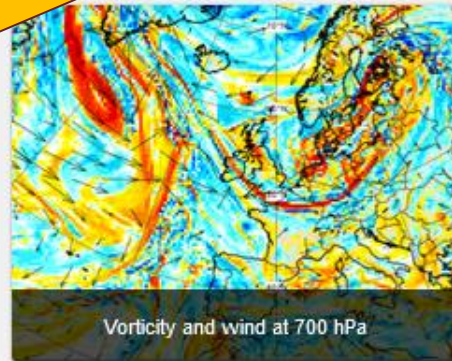
Mean sea level pressure and wind at 200 hPa



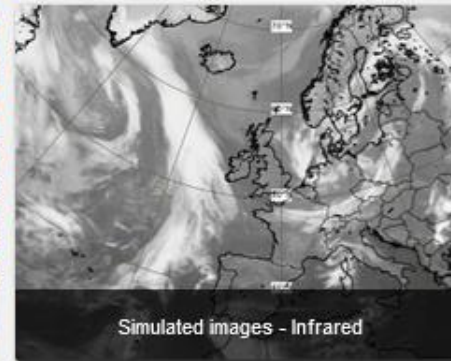
Rain and sea level pressure



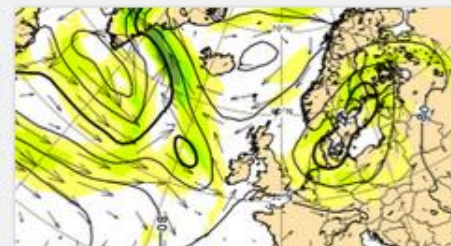
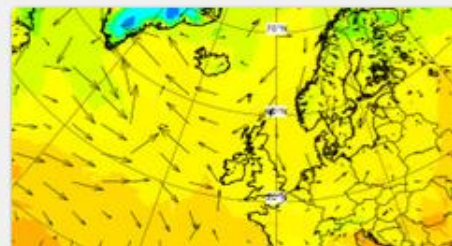
Total cloud cover



Vorticity and wind at 700 hPa



Simulated images - Infrared



Thank you for your attention!



Feedback welcome in the chat

Open Charts:

<https://apps.ecmwf.int/webapps/opencharts>

