

# From univariate to multivariate bias-adjustment of climate models for impact studies

Advances and challenges in the past decade

Faranak Tootoonchi  
 Jan Olaf Haerter  
 Olle Rätty  
 Thomas Grabs  
 Claudia Teutschbein  
*(in preparation)*

 UPPSALA UNIVERSITET  
 @faranak\_ttch  
 faranak.tootoonchi@geo.uu.se

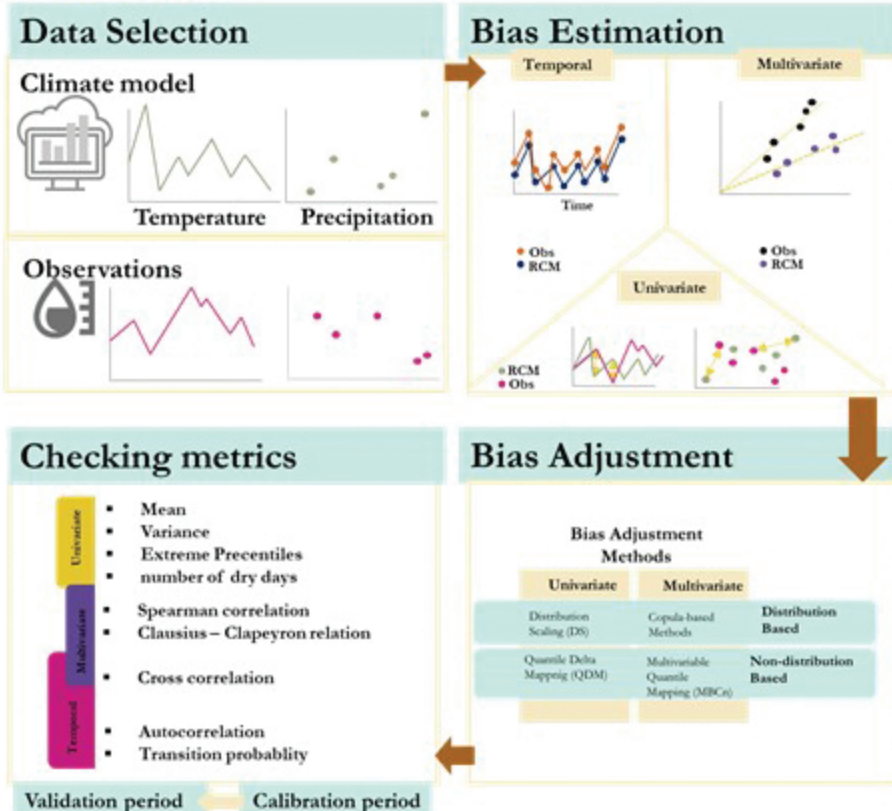
## 1. Motivation:

Bias-adjustment methods are becoming more complicated

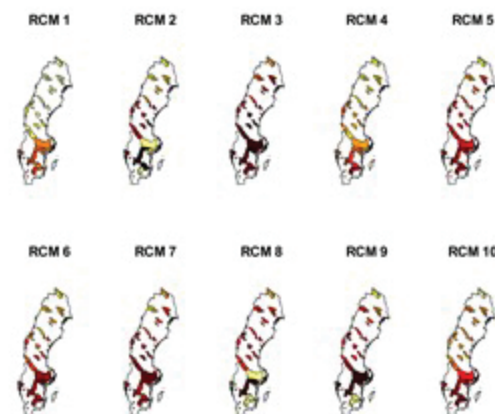


How can impact modelers adopt and benefit from different approaches?

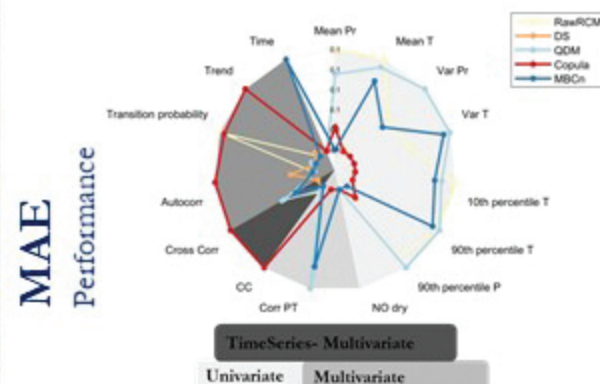
## 2. Method:



## 3. Result:



There are different biases in dependence structure of RCMs



Selection of suitable method for bias correction is rather application-dependent