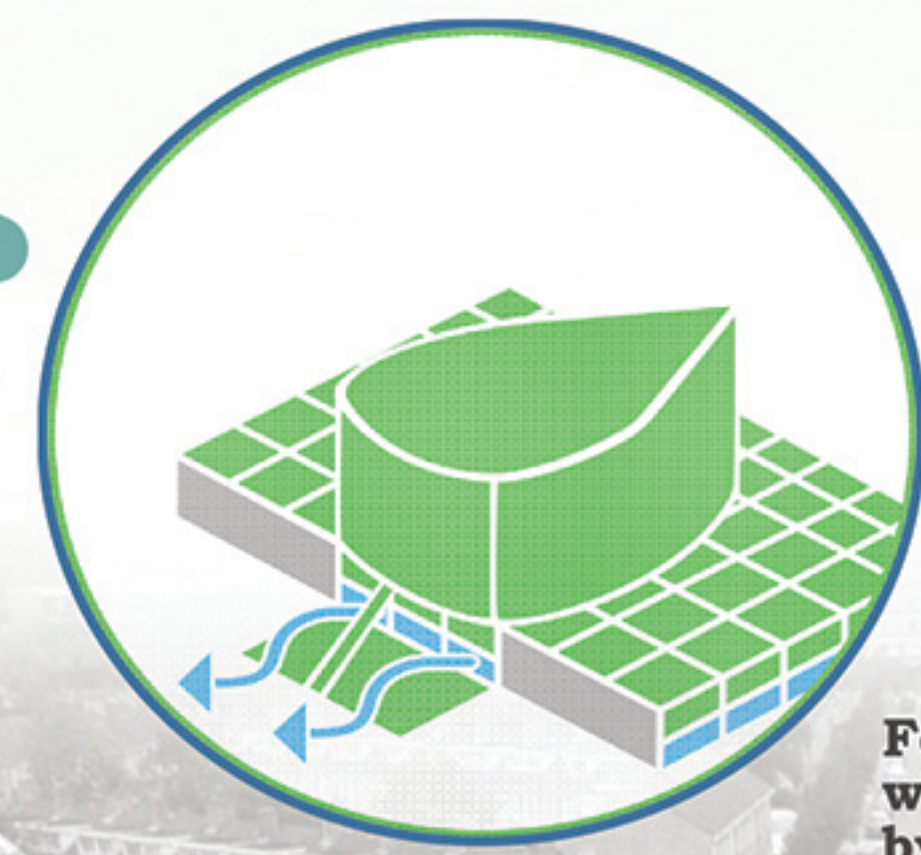
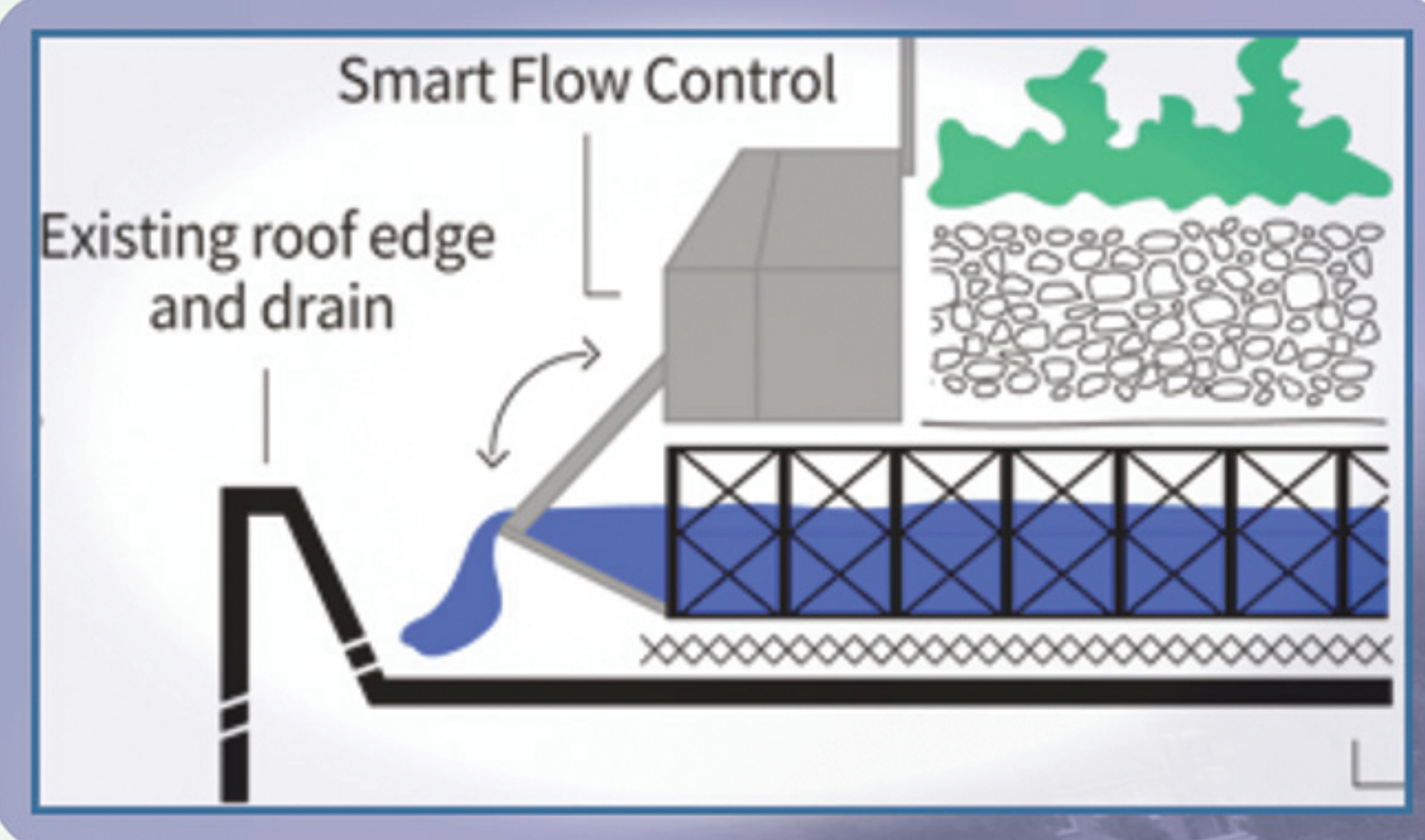
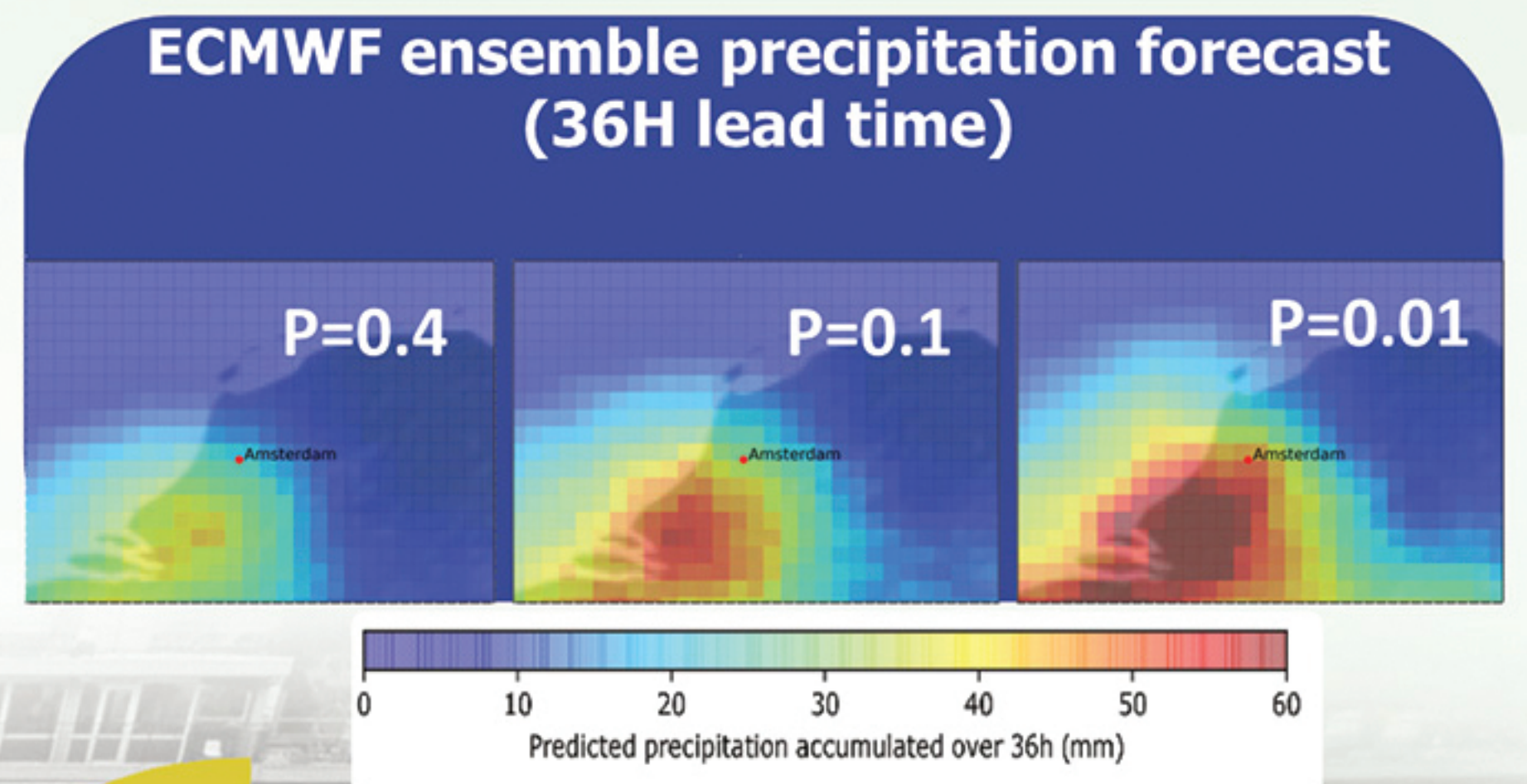


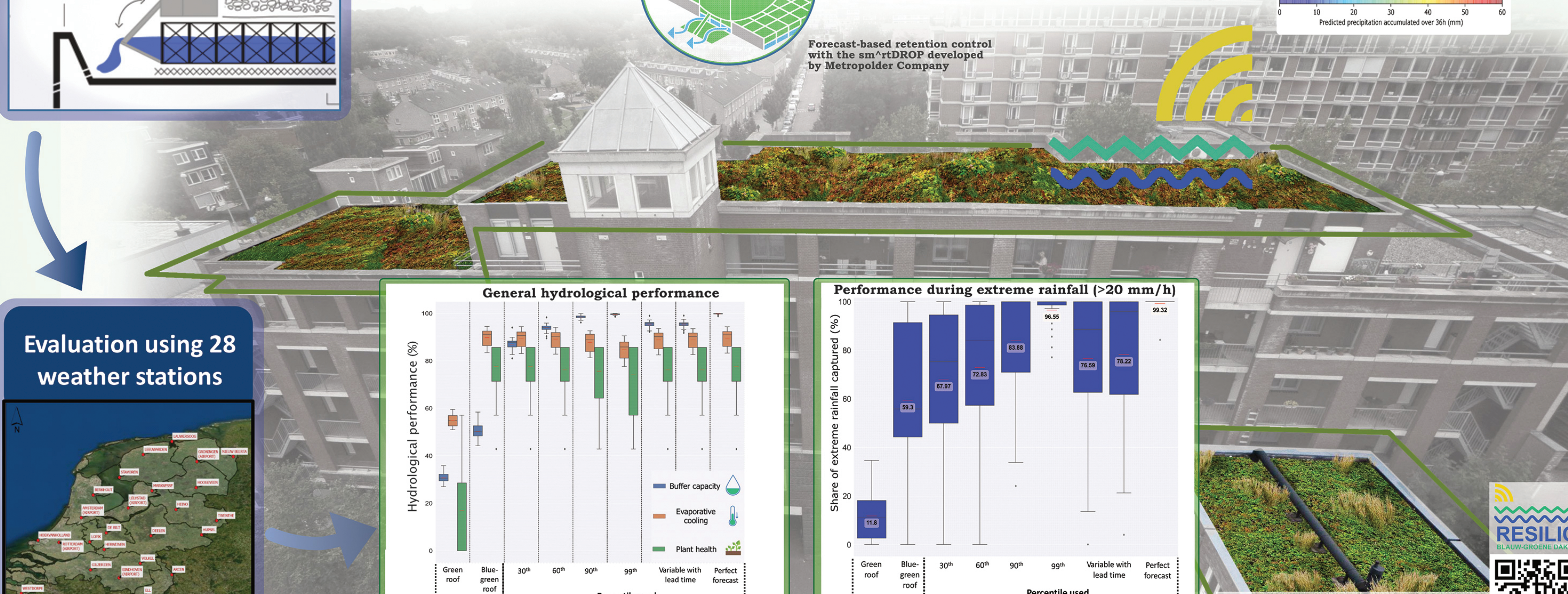
Blue-green roofs with forecast-based operation to reduce the impact of climate extremes in cities.

Tim Busker, Hans de Moel, Toon Haer, Maurice Schmeits, Bart van den Hurk, Kira Myers, Dirk Gijsbert Cirkel and Jeroen Aerts

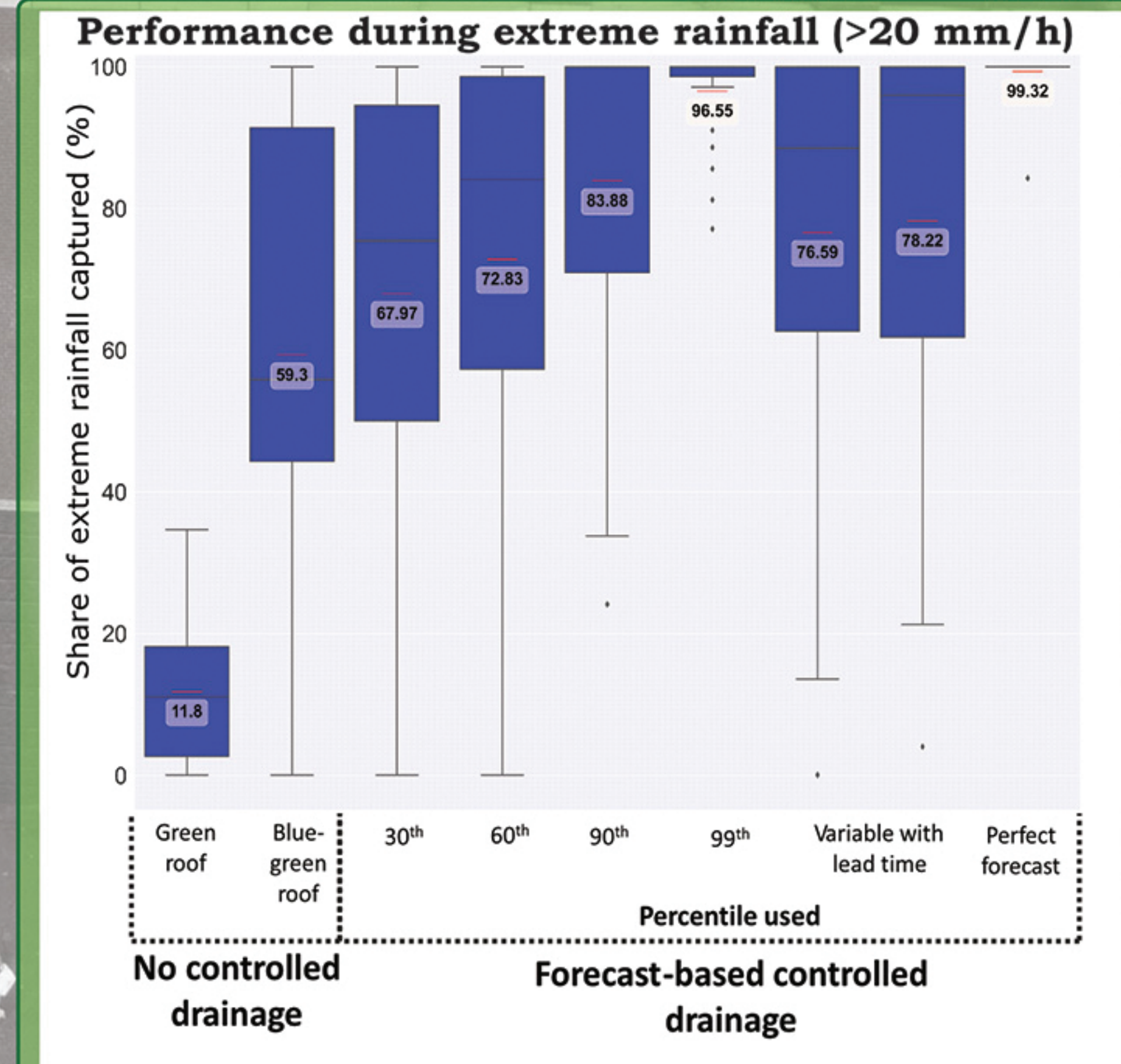
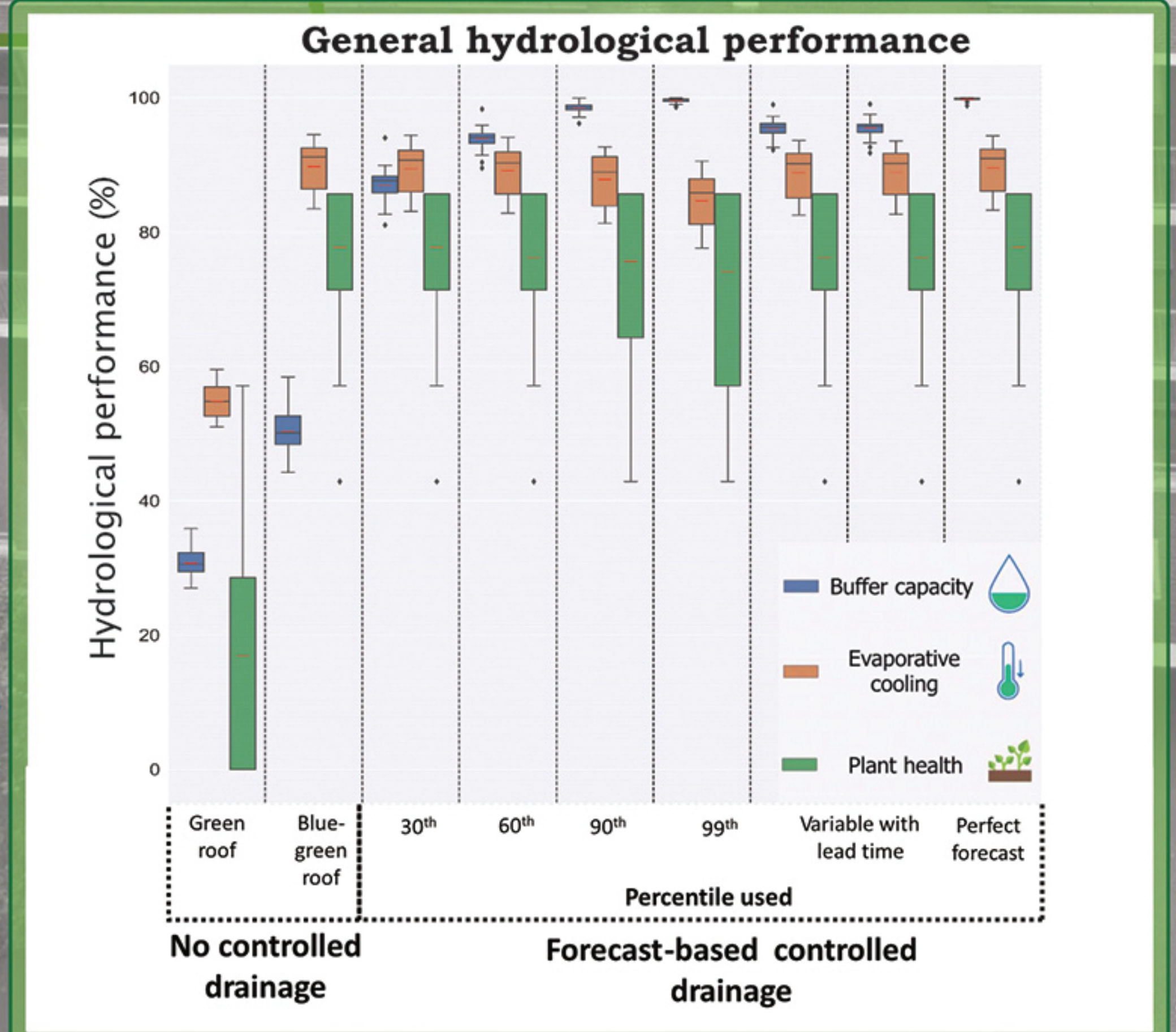
tim.busker@vu.nl



Forecast-based retention control with the sm[^]rtDROP developed by Metropolder Company



Evaluation using 28 weather stations



IVM Institute for Environmental Studies | VU