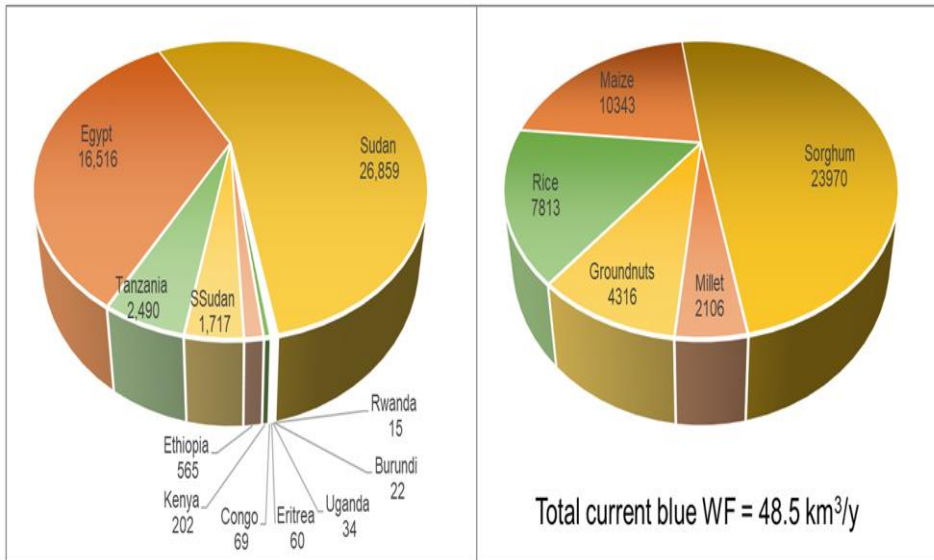
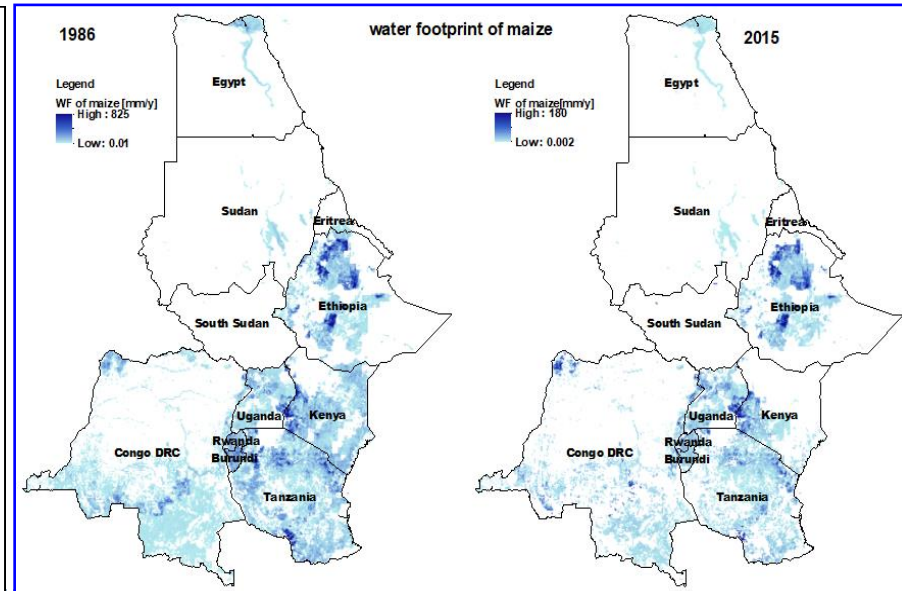
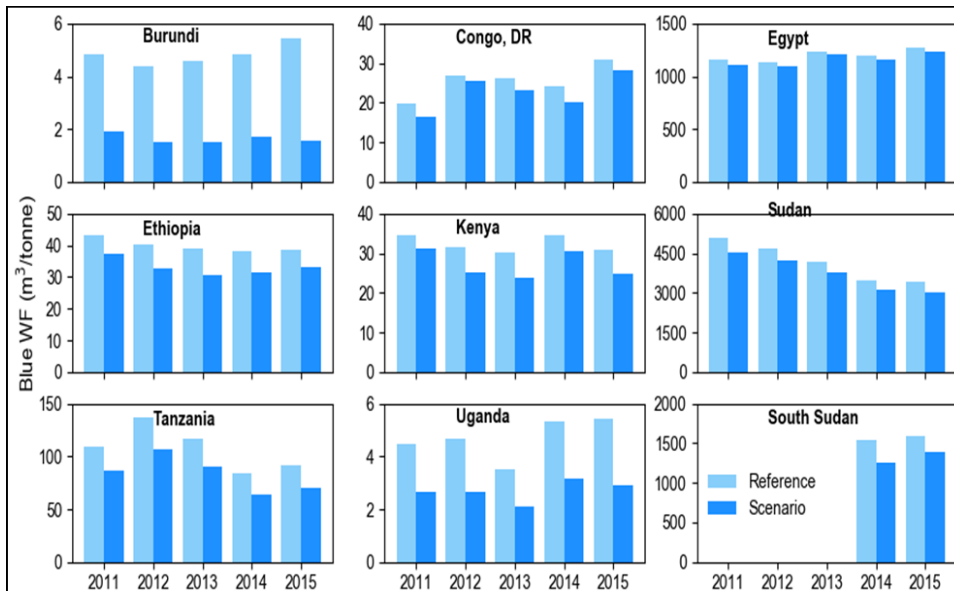


Blue water-saving potential through deficit irrigation & mulching in Nile Basin countries

By: AMANUEL ABATE (University of Gondar)



Country	Rice			Maize			Sorghum			Millet			Groundnuts		
	Ref	Scn	Save	Ref	Scn	Save	Ref	Scn	Save	Ref	Scn	Save	Ref	Scn	Save
Burundi	20.1	13.6	6.5	0.71	0.23	0.48	0.4	0.29	0.11	0.09	0.06	0.03	0.27	0.17	0.1
Congo	13.6	10.5	3.1	37.6	30.7	6.9	0.21	0.16	0.05	0.76	0.6	0.16	16.6	13.3	3.3
Egypt	5882	4303	1579	8761	7341	1420	1212	554	658			0	661	577	84
Ethiopia	77.9	55.3	22.6	276	249	26.8	202	63	139	9.16	5.3	3.86			0
Kenya	59.5	46.6	12.9	117	92.9	24.6	16.5	12.5	4	7.65	6.41	1.24	0.96	0.81	0.15
Rwanda	14.5	10.2	4.3												
Sudan	65.8	57.9	7.9	194	151	43	21156	8511	12645	2041	1121	920	3402	1940	1462
South Sudan			0	317	182	135	1282	652	630	11.4	6.96	4.44	106	58.8	47.2
Tanzania	1613	1366	247	626	461	165	95	61.7	33.3	34.1	20.8	13.3	121	82.7	38.8
Uganda	6.38	5.34	1.04	13	7.13	5.87	5.34	3.23	2.11	2.16	1.38	0.78	7.16	4.26	2.9
Total	7813	5915	1897	10343	8515	1828	23970	9858	14112	2106	1163	944	4316	2678	1638



► Blue WF of maize in all countries under reference & water-saving scenario