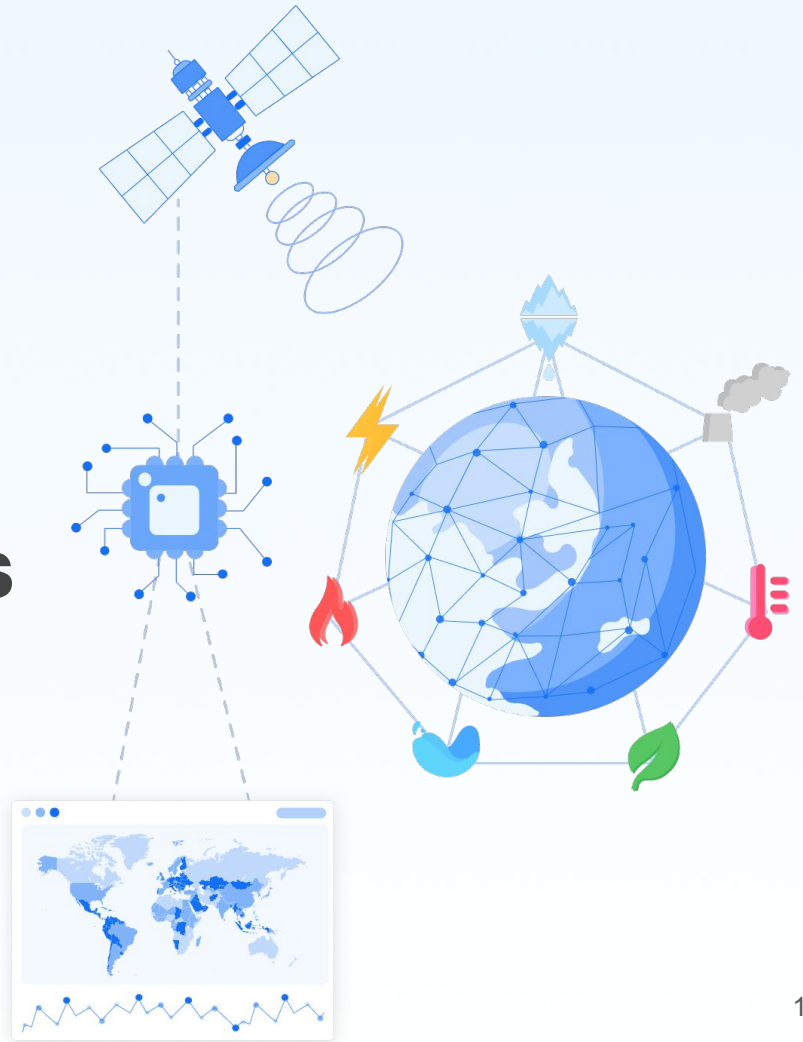


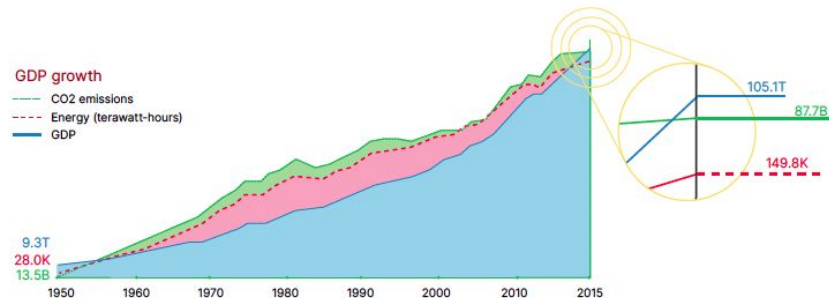


Climate Intelligence to enable critical decisions



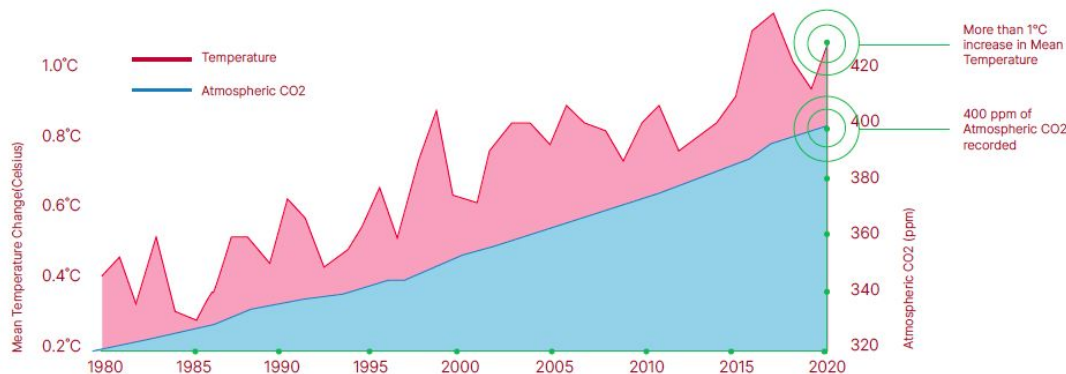
Climate Emergency

The only global crisis with a deadline.



Over The Last Century The World Has Experienced Unprecedented Economic Growth Primarily Driven By Energy Use

As Jeff Bezos said,
"Climate change, the
biggest threat to our planet"



Increase In Carbon Dioxide Is The Primary Driver Of Rising Global Temperatures
Mean temperature change relative to 1850-1900 in degrees Celsius and atmospheric CO2 (ppm)

SEC Proposes Rules to Enhance and Standardize Climate-Related Disclosures for Investors

FOR IMMEDIATE RELEASE

2022-46

Washington D.C., March 21, 2022 — The Securities and Exchange Commission today proposed rule changes that would require registrants to include certain climate-related disclosures in their registration statements and periodic reports, including information about climate-related risks that are reasonably likely to have a material impact on their business, results of operations, or financial condition, and certain climate-related financial statement metrics in a note to their audited financial statements. The required information about climate-related risks also would include disclosure of a registrant's greenhouse gas emissions, which have become a commonly used metric to assess a registrant's exposure to such risks.

June 8, 2021
9:03 PM GMT+5:30
Last Updated 10 months
ago

Finance & Banking

Insurance

Bank of England launches climate stress test for banks and insurers

 **TCFD** | TASK FORCE ON CLIMATE-RELATED FINANCIAL DISCLOSURES

EU Taxonomy for Sustainable Finance



Taskforce on Nature-related Financial Disclosures



SCIENCE
BASED
TARGETS

DRIVING AMBITIOUS CORPORATE CLIMATE ACTION

Gold Standard[®]



PRI | Principles for Responsible Investment



Unavailability of climate data



Unavailability of scalable APIs or infrastructure for climate use-cases



Self reported data vs observed data. Old sparse, infrequent datasets



Lack of high frequency, high-accuracy data with adequate spatio-temporal resolution

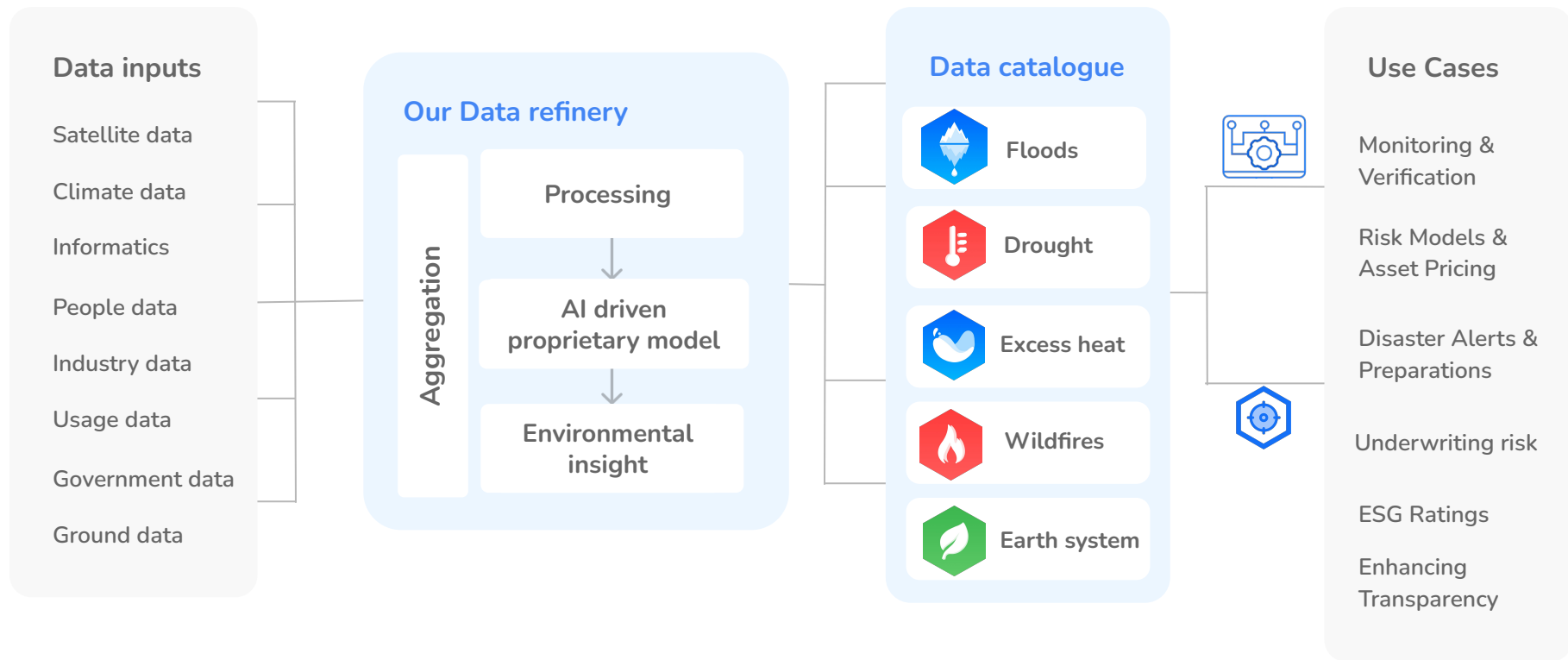


Limited availability across geographies while climate change is a global problem



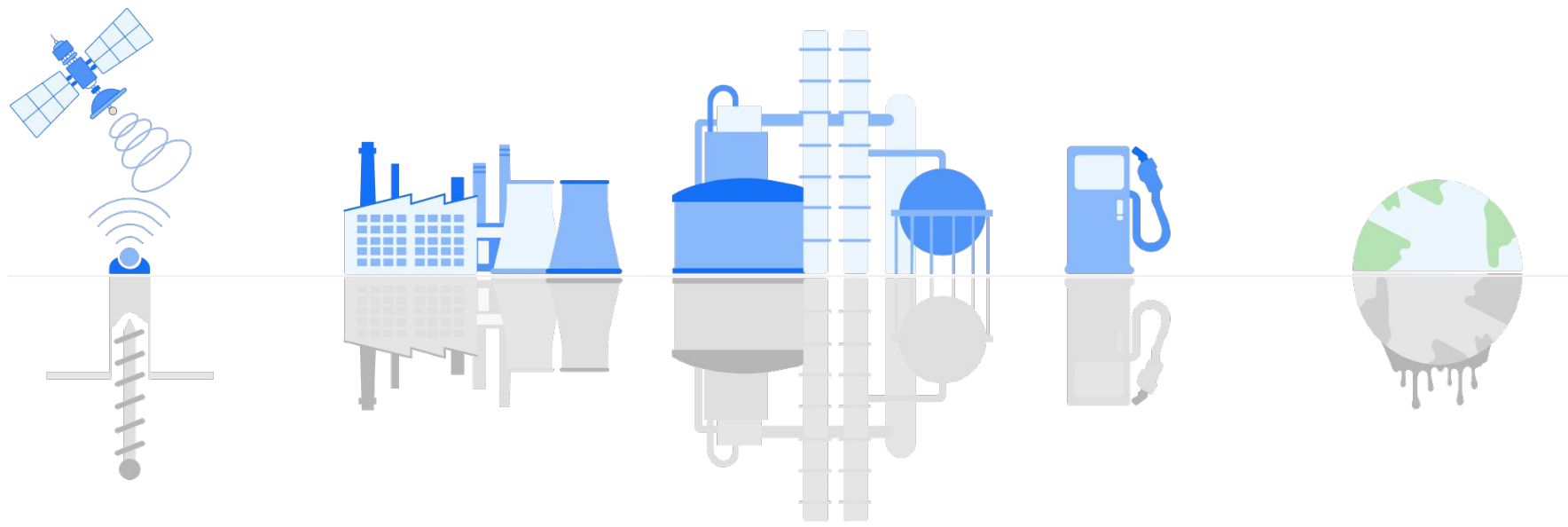
Multiple datasets need for measurements but no consolidated service available

Our Solution : Raw Data to Climate Intelligence



Building world's largest geospatial data refinery


Satellite and Sensors Blue Sky Data Refinery AI Models APIs Sustainable Ecosystem





Oil wells Oil refinery Fractional Distillery Petrol Pumps Carbon Economy


About us : BSA at a glance

A high growth DAAS company


 Started operations in **2019**
1st enterprise customer in 2020


 **15** strategic partners
1+M revenue till date


 **30** employees working
remote from **3** continents


 **300+** users on Dev portal
50 terabytes of data analyzed

Backed by Deep Tech

 In house forecasting models
with **high accuracy**

 Climate data as **daas**
delivered via **API**

 **Visualization** platform
for multiple datasets

 **Automated** tech infra for generating
datasets in **minimal time**

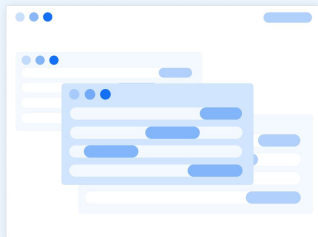
Mission : **Climate Data** to power decisions

Blue Sky Analytics provides extensive Climate Intelligence by refining and modelling
Satellite data and delivering in real time to support variety of high value & high impact use cases

API Gateway

For Data scientists & Developers

Easy integration by data teams of organization into existing software, different models, algorithms, or data products



Analytics

For Analysts & Operations

Bespoke reporting with insights, inferences for non-technical clients, project assignments in climate litigation/ investment due diligence.



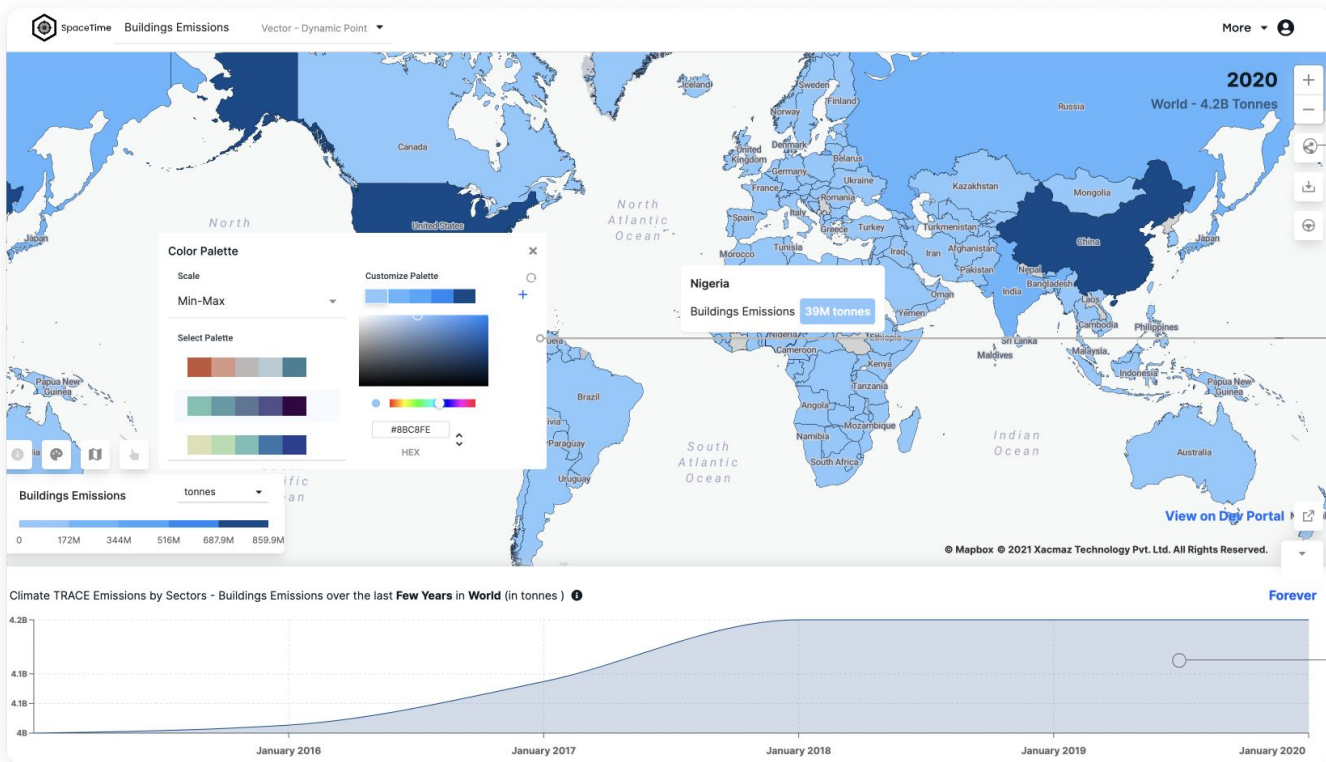
SpaceTime

For World

Freemium visualisation tool for general population for increasing awareness, assisting journalists, exploration by clients, marketing, etc.



A data & analytics based platform approach provides the opportunity to both, serve existing organizations and also enable emerging Climate-tech companies.

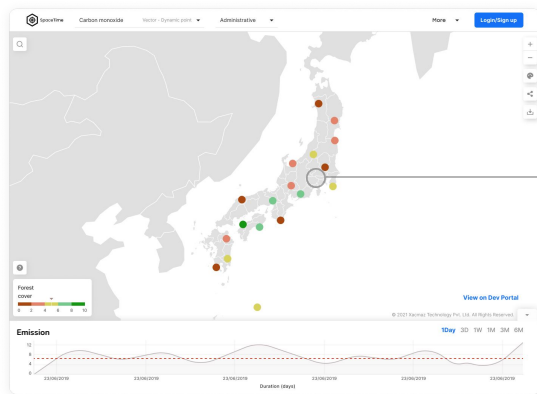


Download, share and make the world aware

Make your own color palette select your own visual representation and make the world aware

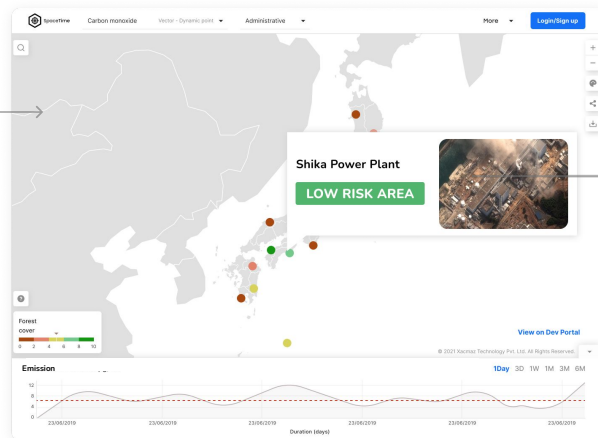
Visualize all datasets in Spatio - temporal context

SpaceTime™ provides freemium spatio-temporal environment/climate data to various clients and users for variety of critical infrastructure, natural assets, and more



Level 1 : Aggregated

With rising climate risk, often exceeding existing models and predictions, and increased conservation efforts across board has resulted in demand for near real time asset level monitoring



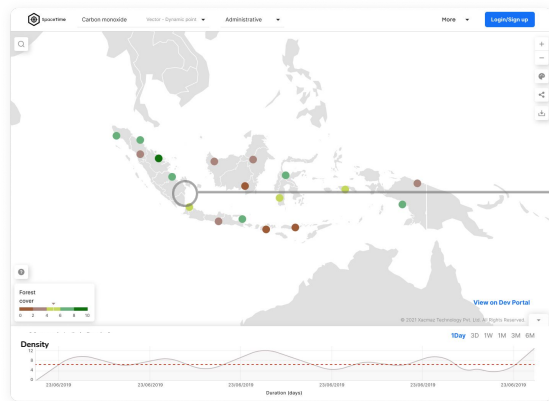
Level 2 : Asset view

Monitoring assets for both their impact on the environment in terms of pollution or emissions, or effect of climate change on them is demanded across sectors



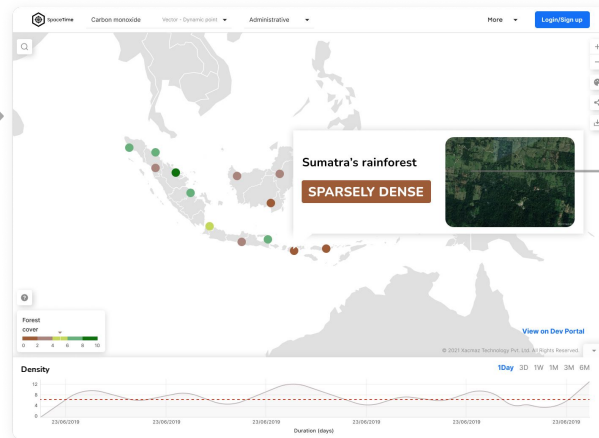
Level 3 : High Resolution

SpaceTime™ allows clients to monitor assets for series of use cases



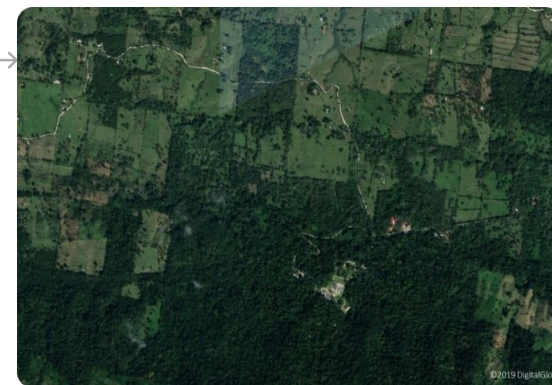
Level 1 : Country view

Presently, forests form 2% of global GDP, however with efforts around stopping deforestation, increasing land based carbon sequestration, the value of forest & hence management, monitoring services has exploded



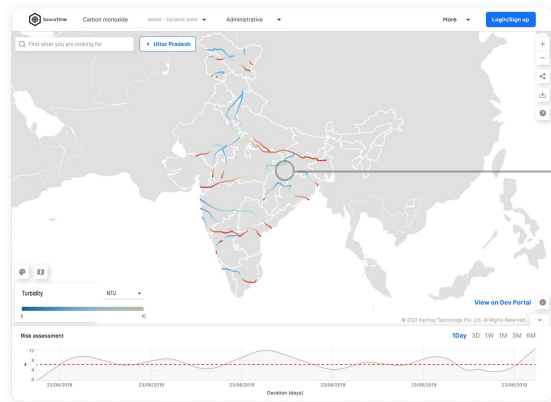
Level 2 : Asset view

Blue Sky Analytics digs deep down in global forest monitoring, starting with wildfires, to deforestation & reforestation



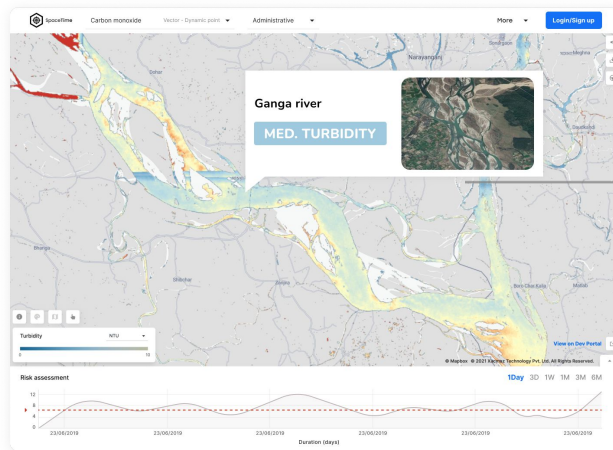
Level 3 : High Resolution

Clients can load their concerned land & access series of parameters



Level 1 : Country view

Climate change poses one of the highest threats to global water security, in forms of extreme precipitation induced flooding and amplified droughts



Level 2 : Asset view

Various public & private organizations are actively engaging in river/lake monitoring for protection, risk mitigation, or long term planning



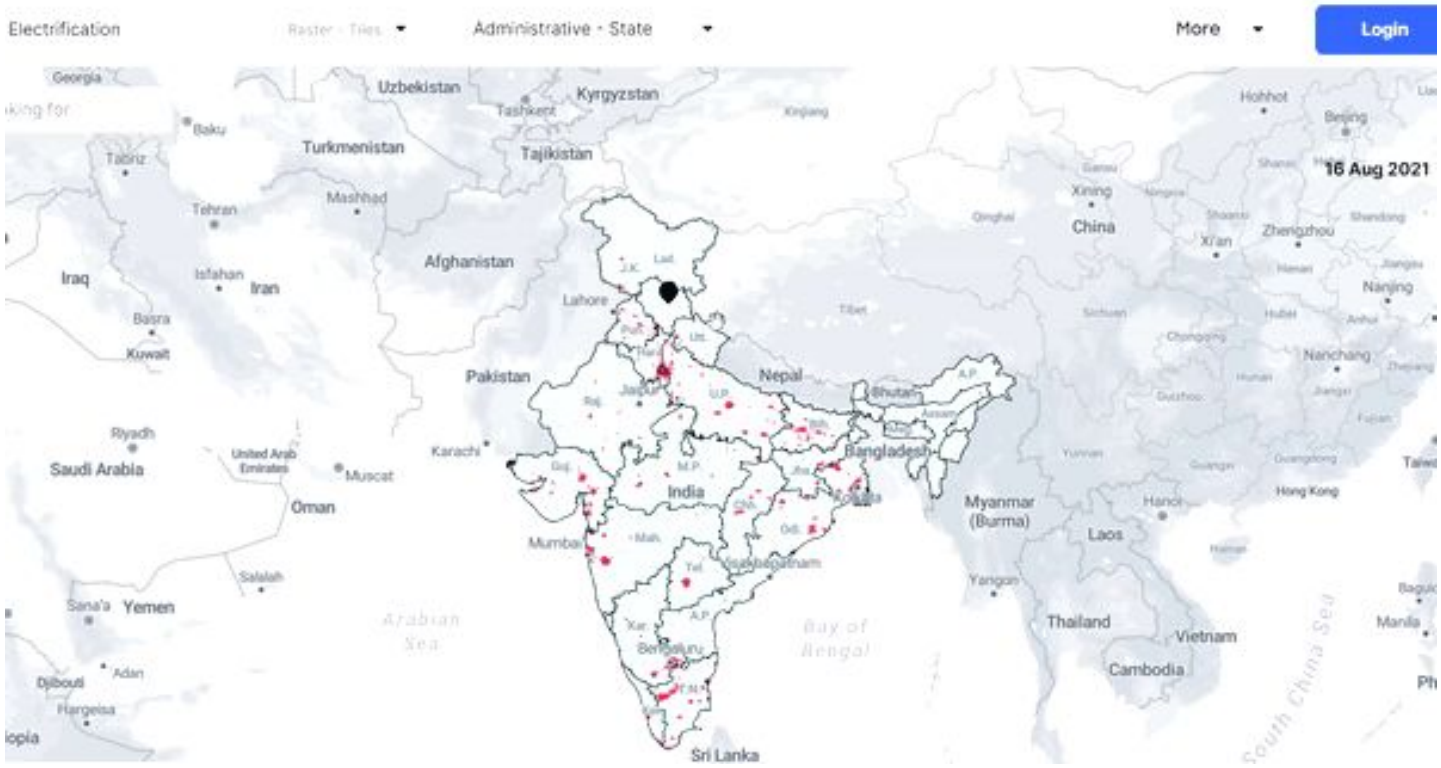
Level 3 : High Resolution

Access high resolution details of lakes and rivers on SpaceTime™

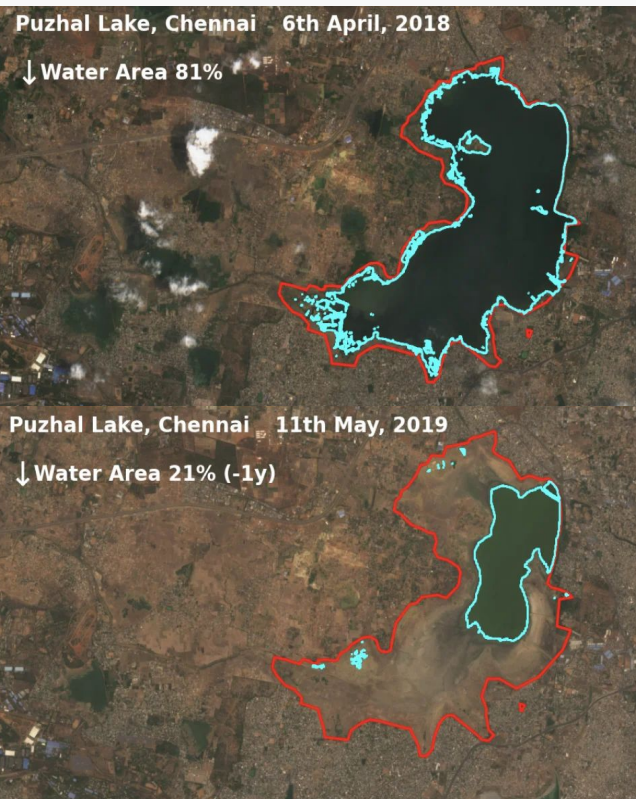
SpaceTime in Action- GHG Emissions (Climate TRACE)



SpaceTime in Action- Electrification



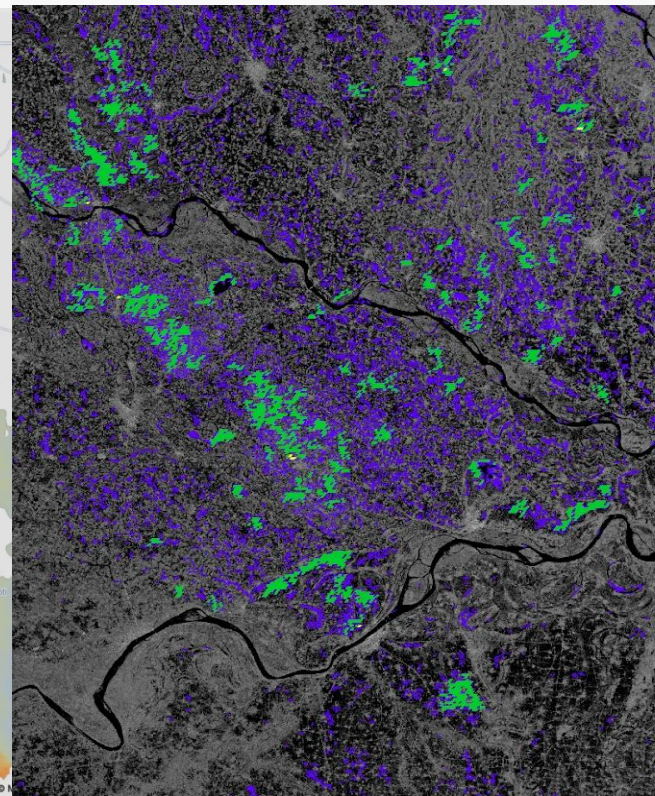
Water quality and quantity indicators via remote sensing



The image on top shows Puzhal Lake as on 5 April 2018 and on 11 May 2019

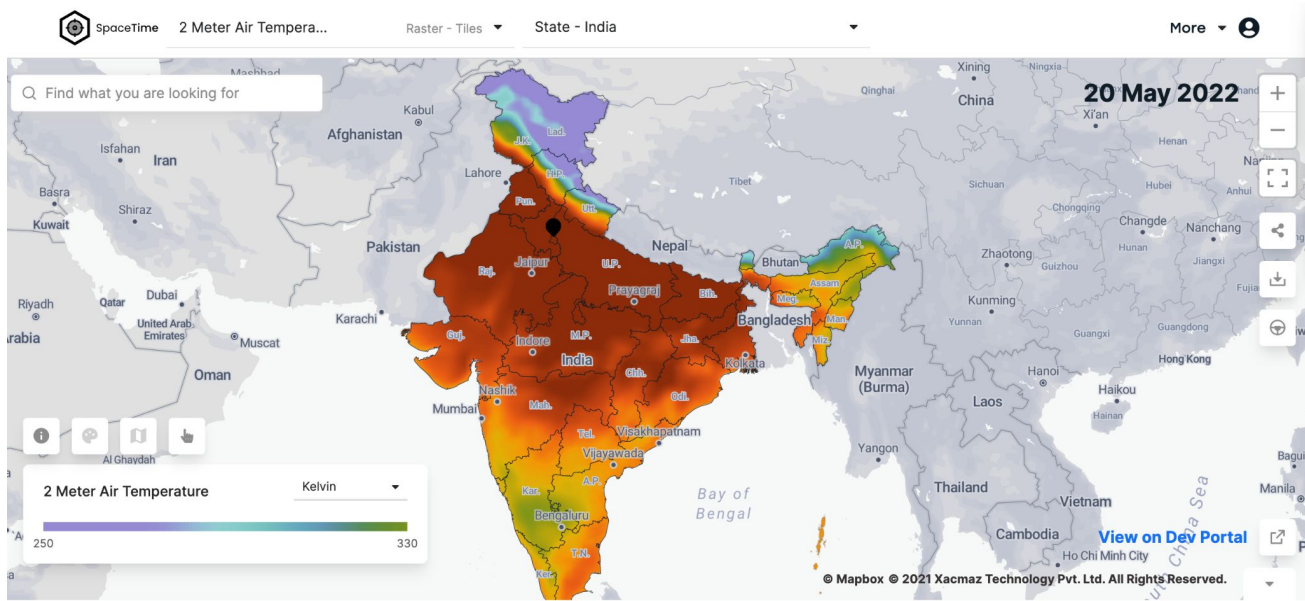


Water quality at the Ujani Reservoir on 21 December 2021



Flood inundated area in Bihar

Intensified heat waves across the country



Abhilasha Purwar, CEO

10+ years of experience in finance, policy, environment, data, and business development

Private Equity **GoldenSet Capital**
Data Analytics **PEG-Africa**
Env. Policy **JPAL**



Kshitij Purwar, CTO

5+ years of experience in product & technology development, managing 15+ people tech team at BSA

Product Development **Hiver**
Self Taught **Developer**
College **Dropout**



Timescale



Working today
to make tomorrow
POSSIBLE

Contact us: tej@blueskyhq.io
kshitij@blueskyhq.io