

Eumetnet Storm Naming project

Evelyn Cusack, Chair Task Team on Storm Naming from the Working Group for Co-operation between European Forecasters (WGCEF)



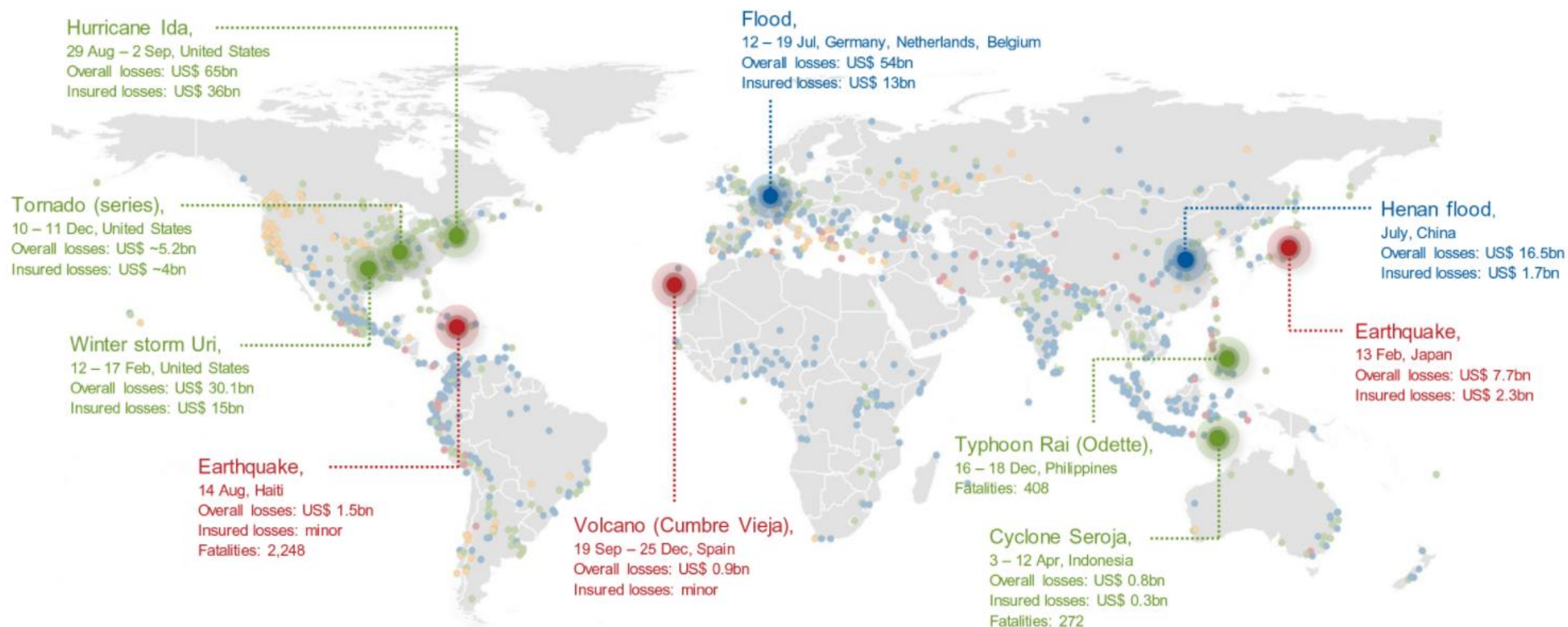


*Is mairg a báitear in am an
anfa, mar tagann an ghrian i
ndiaidh na fearthainne*

*Pity the man who dies in the
storm as the sun always
follows the rain*

Relevant natural catastrophe loss events worldwide 2021

Natural disasters caused overall losses of US\$ 280bn



Geophysical events

Earthquake, tsunami,
volcanic activity



Meteorological events

Tropical storm, extratropical storm,
convective storm, local storm



Hydrological events

Flood, mass movement



Climatological events

Extreme temperature,
drought, wildfire

○ Significant catastrophes

○ Small, medium and large loss events

WEATHER CLIMATE WATER



WORLD
METEOROLOGICAL
ORGANIZATION

Early Warning and Early Action


World Meteorological Day 2022



www.met.ie/warnings

	STATUS YELLOW <i>Weather that does not pose a threat to the general population but is potentially dangerous on a localised scale.</i>	STATUS ORANGE <i>Infrequent and dangerous weather conditions which may pose a threat to life and property.</i>	STATUS RED <i>Rare and very dangerous weather conditions from intense meteorological phenomena.</i>
Wind <i>Mean wind: 10 minute (higher on coasts/high ground/funnelling effects etc)</i>	Widespread mean speeds between 50 and 65km/h and/or Widespread gusts between 90 and 110km/h	Widespread mean speeds between 65 and 80 km/h and/or Widespread gusts between 110 and 130 km/h	Widespread mean speeds in excess of 80 km/h and/or Widespread gusts in excess of 130 km/h
Coastal Wind Warnings <i>Mean speeds up to 30 nautical miles offshore</i>	Gale force 8 or strong gale force 9.	Storm force 10.	Violent storm force 11/Hurricane Force 12.
Rain <i>Amounts can be up to double on windward upper slopes & impacts vary with soil moisture deficits</i>	20mm – 30mm in 6 hrs or less. 30mm – 40mm in 12 hrs or less. 30mm – 50mm in 24 hrs	30mm – 50mm in 6 hrs or less. 40mm – 60mm in 12 hrs or less. 50mm – 80mm in 24 hrs	Greater than 50mm in 6 hrs or less. Greater than 60mm in 12 hrs or less. Greater than 80mm in 24 hrs or less.
Snow/Ice <i>Heavy rain can turn to snow when temperatures are around zero (up to around +4C)</i>	Guidelines only 3cm or greater in 24hrs.	Guidelines only 3cm or greater in 6 hrs 5cm or greater in 12 hrs 10cm or greater in 24 hrs	Guidelines only 10cm or greater in 6 hrs 15cm or greater in 12 hrs 30cm or greater in 24 hrs
Low temperature/Ice <i>Ground temperatures can be as much as 10 degrees lower than air temps</i>	Air minima of minus 3C or minus 4C expected over a wide area (localised lower values will occur). <ul style="list-style-type: none">• <i>Dangerous surfaces due to ice and/or lying snow. Situation improving.</i>	Air minima of minus 5C to minus 10C (or lower) expected over a wide area. <ul style="list-style-type: none">• <i>Dangerous surfaces due to ice and/or lying snow/freezing rain. Situation stable</i>	Air minima minus 10C (or below) for three consecutive nights or more. Maxima of minus 2C. <ul style="list-style-type: none">• <i>Dangerous surfaces due to ice and/or lying snow/freezing rain. Situation likely to worsen</i>
High temperature <i>High minima can be more impactful than high maxima</i>	>27/15/>27 Maxima in excess of 27C expected and minima in excess of 15C over 36 hrs	>30/20/>30/20/>30 Maxima in excess of 30C for three days and minima of 20C for two nights (consecutive)	As orange criterion, but persisting for five or more consecutive nights.
Thunderstorms <i>Possible flash flooding</i>	Localised thunderstorms/lightning activity/heavy rainfall.	Widespread thunderstorms/severe lightning activity/heavy rainfall/large damaging hail	Exceptional.
Fog (or freezing fog)	Dense fog over a wide area or pockets of freezing fog.	Dense fog/freezing fog persisting over a wide area causing a widespread and significant driving hazard on national primary routes.	Exceptional.

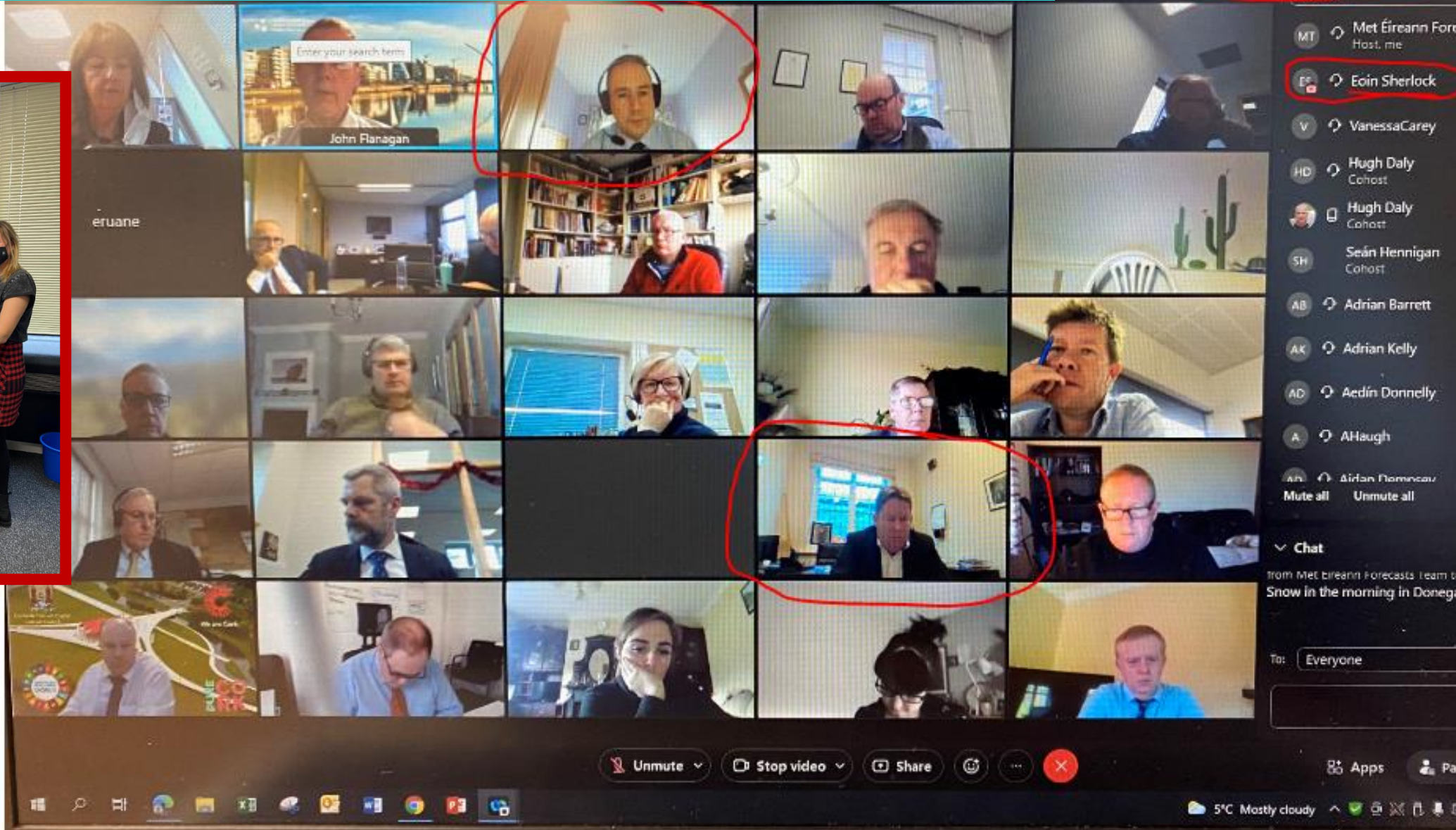
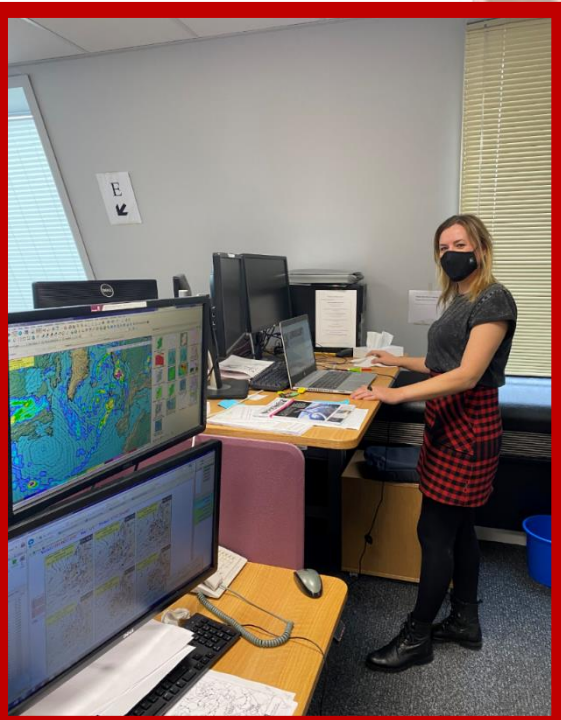


	STATUS YELLOW	STATUS ORANGE	STATUS RED
	 www.met.ie/warnings		
Wind Mean wind: 10 minute (higher on coasts/high ground/funnelling effects etc)	Widespread mean speeds between 50 and 65km/h and/or Widespread gusts between 90 and 110km/h	Widespread mean speeds between 65 and 80 km/h and/or Widespread gusts between 110 and 130 km/h	Widespread mean speeds in excess of 80 km/h and/or Widespread gusts in excess of 130 km/h
Coastal Wind Warnings Mean speeds up to 30 nautical miles offshore	Gale force 8 or strong gale force 9.	Storm force 10.	Violent storm force 11/Hurricane Force 12.
Rain Amounts can be up to double on windward upper slopes & impacts vary with soil moisture deficits	20mm – 30mm in 6 hrs or less. 30mm – 40mm in 12 hrs or less. 30mm – 50mm in 24 hrs	30mm – 50mm in 6 hrs or less. 40mm – 60mm in 12 hrs or less. 50mm – 80mm in 24 hrs	Greater than 50mm in 6 hrs or less. Greater than 60mm in 12 hrs or less. Greater than 80mm in 24 hrs or less.
Snow/Ice Heavy rain can turn to snow when temperatures are around zero (up to around +4C)	Guidelines only 3cm or greater in 24hrs.	Guidelines only 3cm or greater in 6 hrs 5cm or greater in 12 hrs 10cm or greater in 24 hrs	Guidelines only 10cm or greater in 6 hrs 15cm or greater in 12 hrs 30cm or greater in 24 hrs
Low temperature/ice Ground temperatures can be as much as 10 degrees lower than air temps	Air minima of minus 3C or minus 4C expected over a wide area (localised lower values will occur). • Dangerous surfaces due to ice and/or lying snow. Situation improving.	Air minima of minus 5C to minus 10C (or lower) expected over a wide area. • Dangerous surfaces due to ice and/or lying snow/freezing rain. Situation stable	Air minima minus 10C (or below) for three consecutive nights or more. Maxima of minus 2C. • Dangerous surfaces due to ice and/or lying snow/freezing rain. Situation likely to worsen
High temperature High minima can be more impactful than high maxima	>27/15/>27 Maxima in excess of 27C expected and minima in excess of 15C over 36 hrs	>30/20/>30/20/>30 Maxima in excess of 30C for three days and minima of 20C for two nights (consecutive)	As orange criterion, but persisting for five or more consecutive nights.
Thunderstorms Possible flash flooding	Localised thunderstorms/lightning activity/heavy rainfall.	Widespread thunderstorms/severe lightning activity/heavy rainfall/large damaging hail	Exceptional.
Fog (or freezing fog)	Dense fog over a wide area or pockets of freezing fog.	Dense fog/freezing fog persisting over a wide area causing a widespread and significant driving hazard on national primary routes.	Exceptional.

Pre-COVID all Government Departments met in Dublin NECC (National Emergency Co-Ordination Center) and these Government representatives then briefed the Local Authorities, Emergency Services etc and we briefed the Media (TV/Radio/Print) in person.



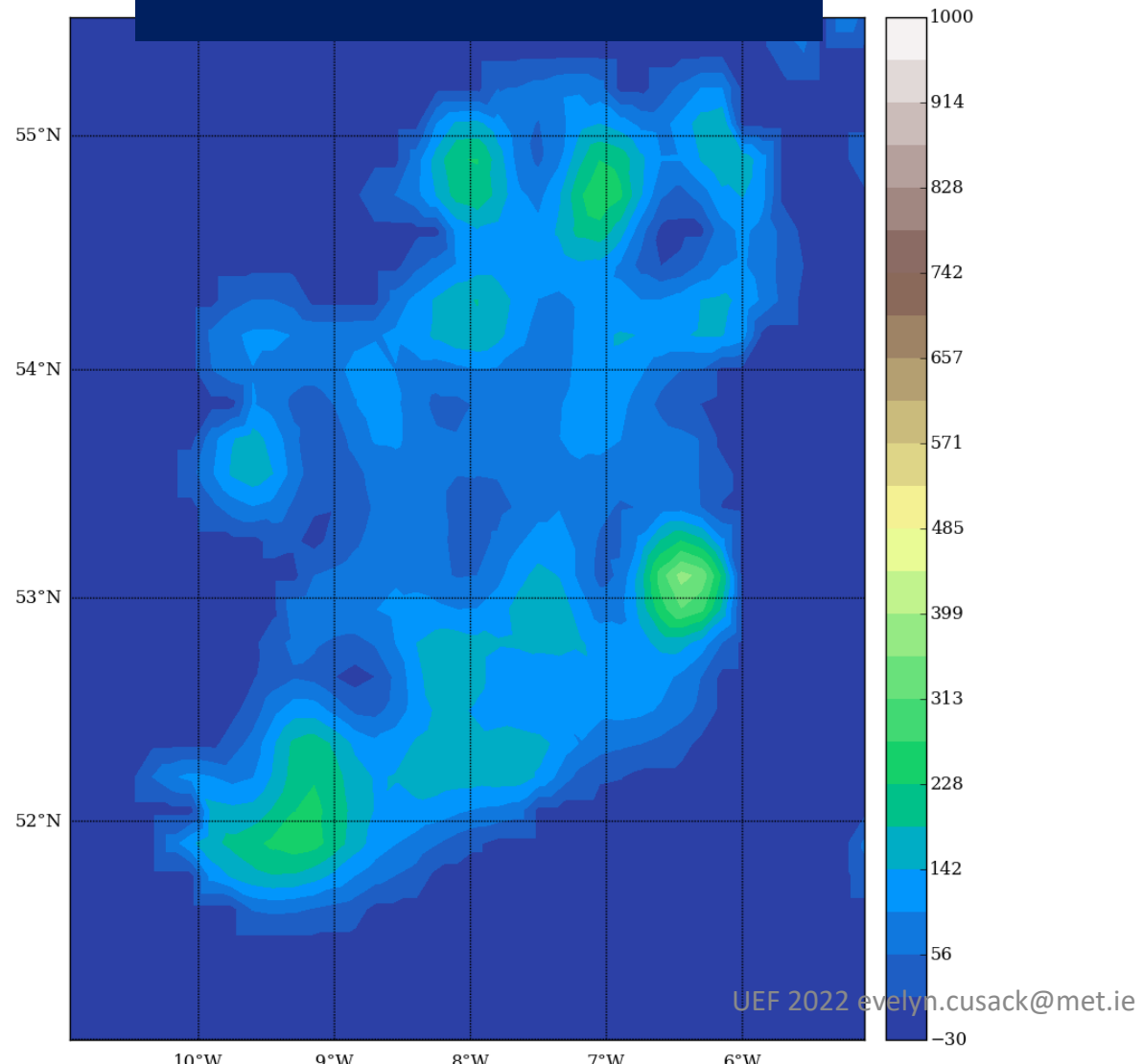
Now all Government Departments and the Local Authorities Severe Weather Emergency Groups are briefed via Webex. Also the Media (TV/Radio/Print) are briefed via Webex or live interviews on radio/TV



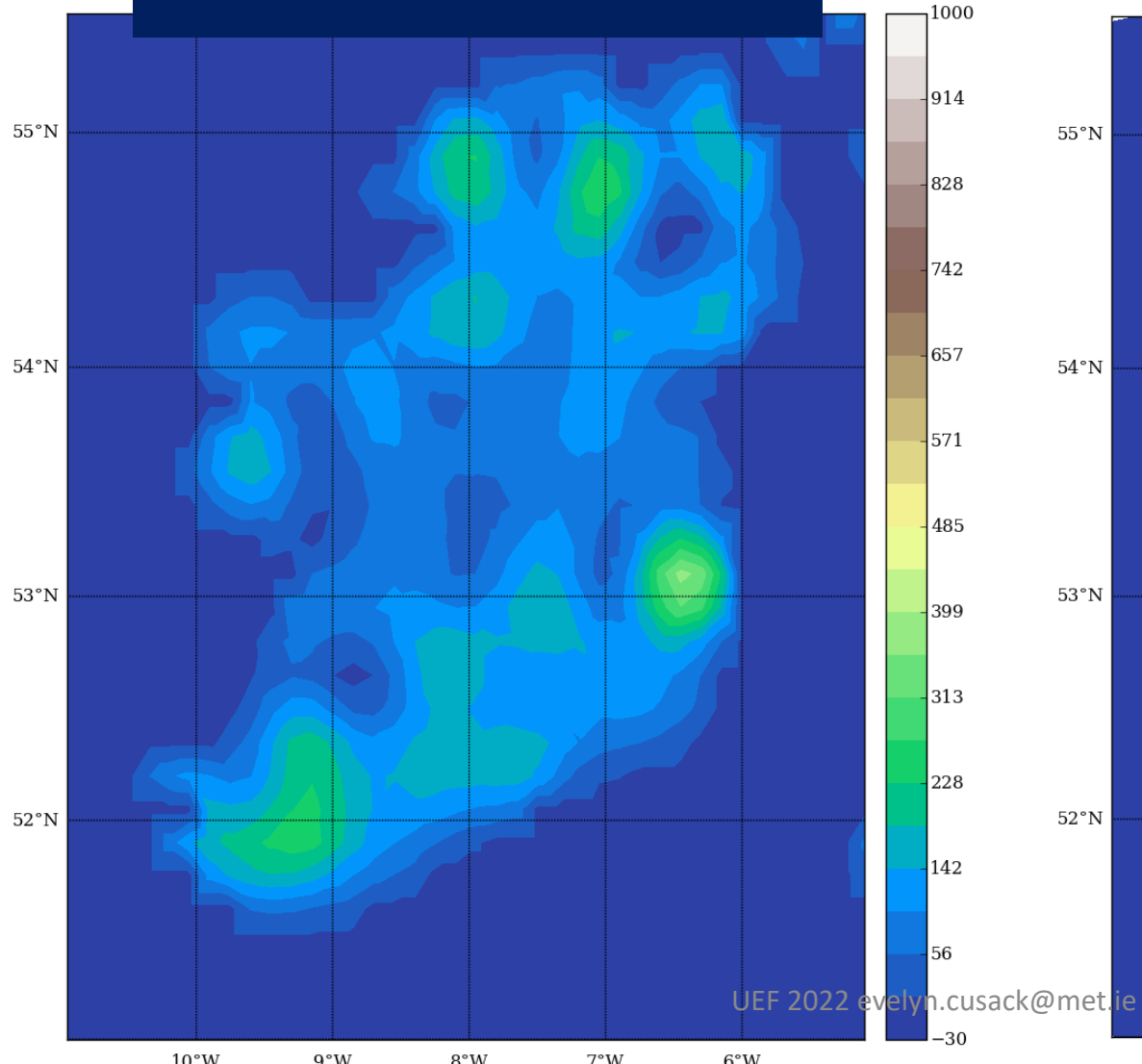
The ECMWF's Cray XC40 supercomputer can perform up to 2 quadrillion calculations a second.



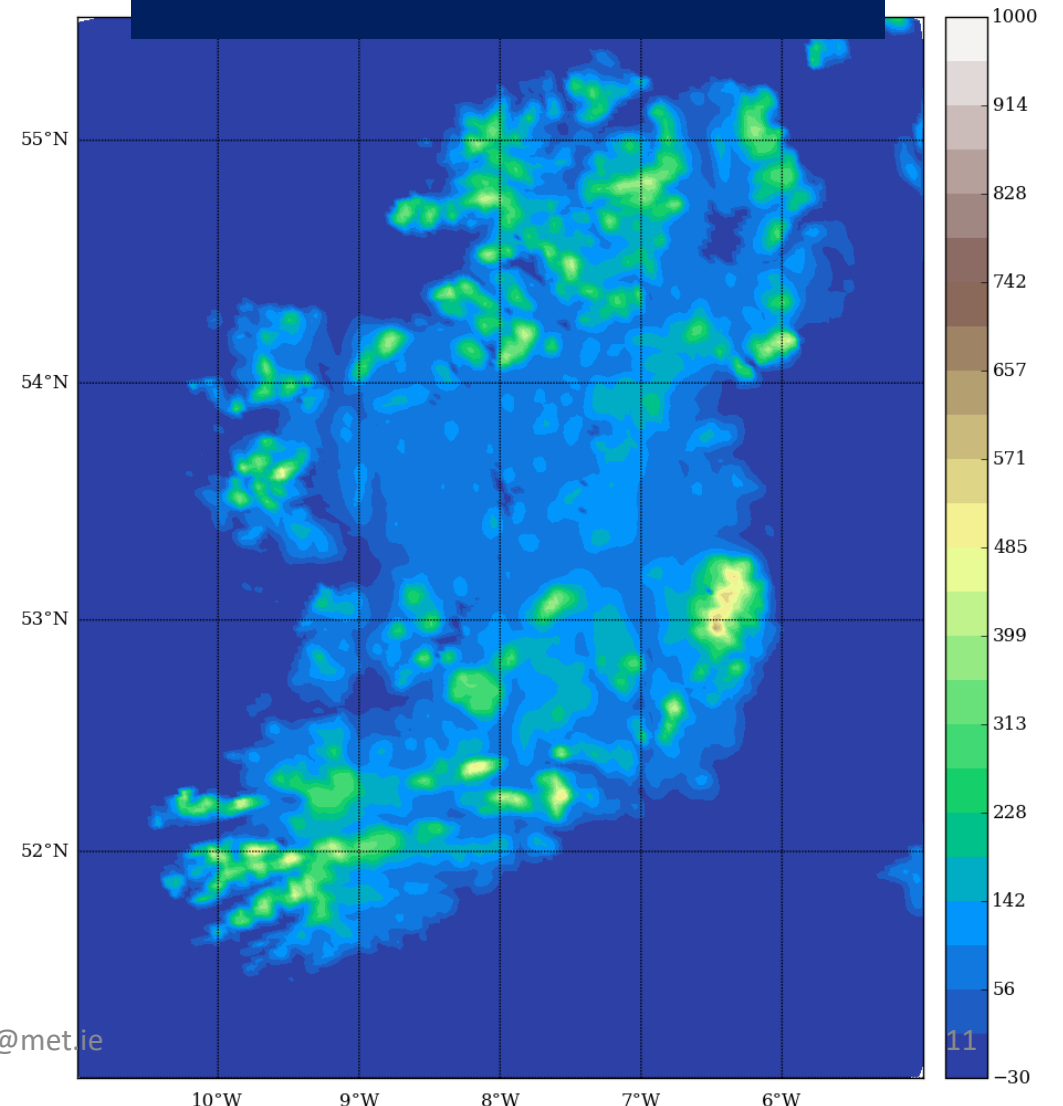
ECMWF Global model
9km resolution
Advisory up to 7 days
ahead



ECMWF Global model
9km resolution
Advisory up to 7 days
ahead

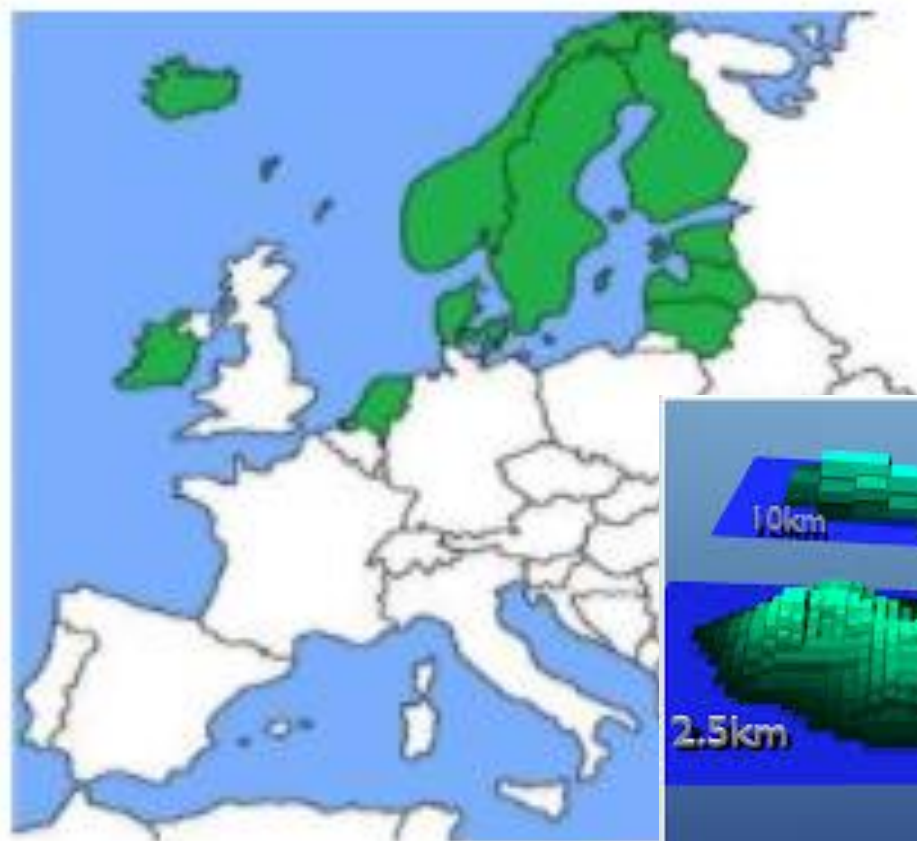


MET Éireann 2.5km
resolution HARMONIE-
AROME model
Warnings 3 days ahead

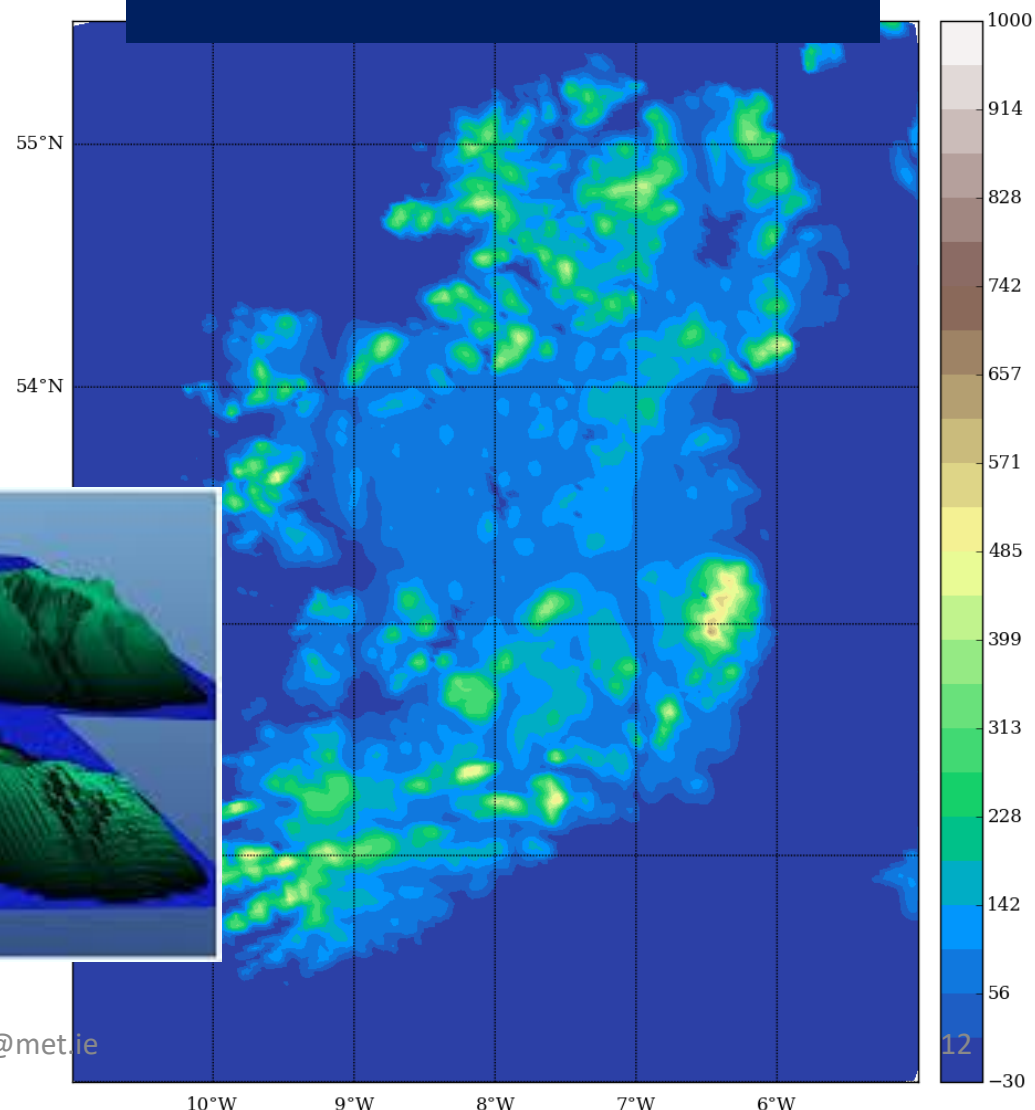
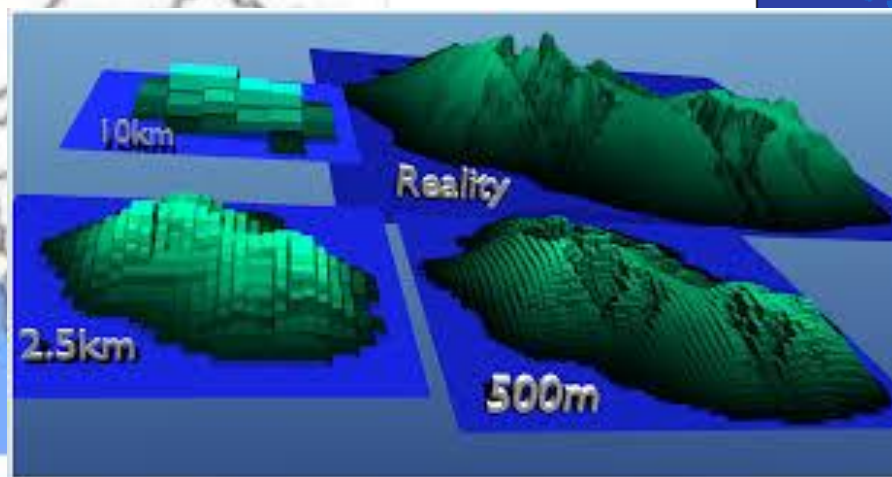


Supercomputer
consortium

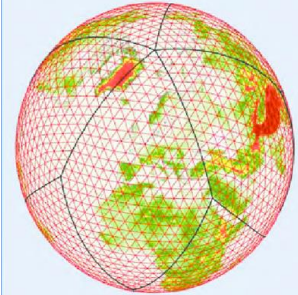
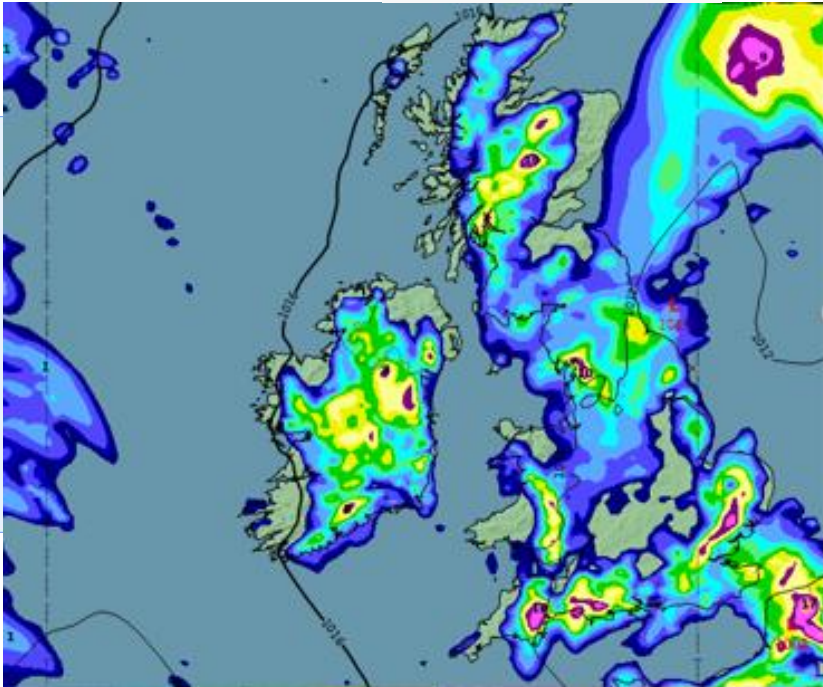
MET Éireann 2.5km
resolution HARMONIE-
AROME model



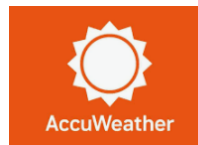
UWC ~ Denmark, Estonia, Finland, Iceland, Ireland, Latvia,
Lithuania, The Netherlands, Norway and Sweden.



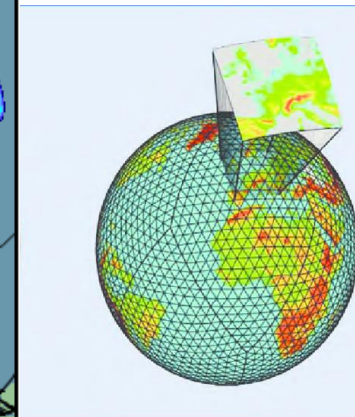
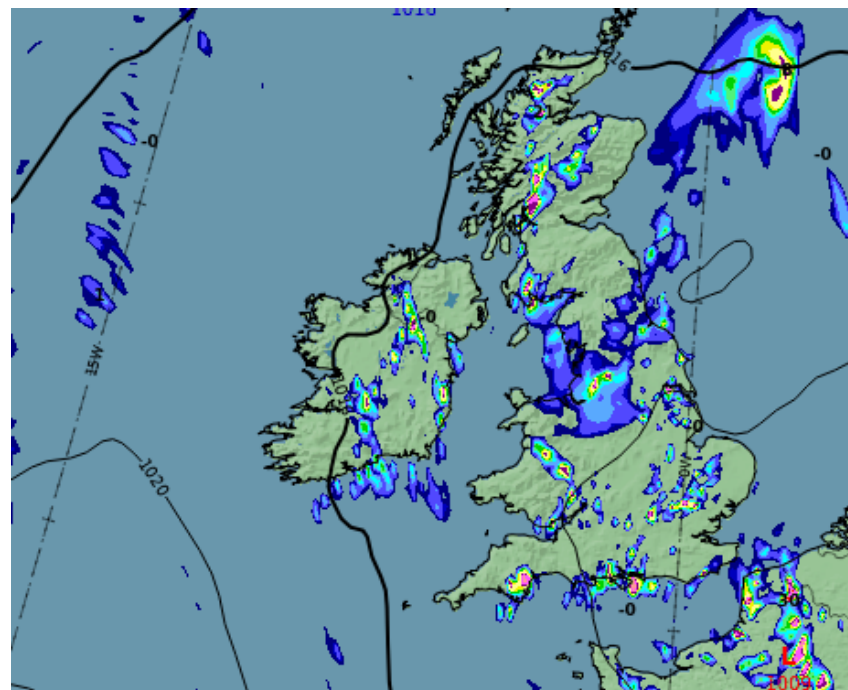
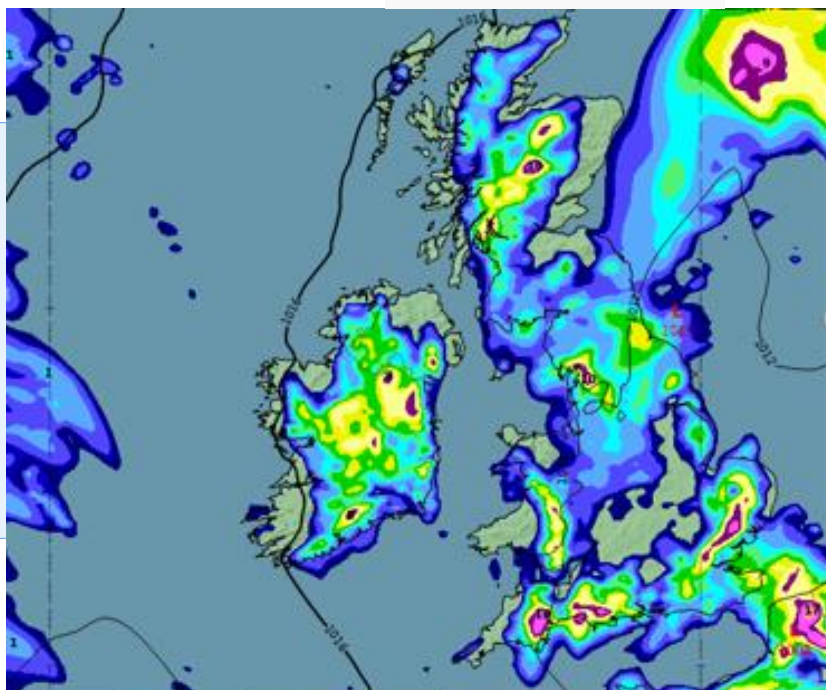
Global model Apps
Resolution typically 9
to 12km



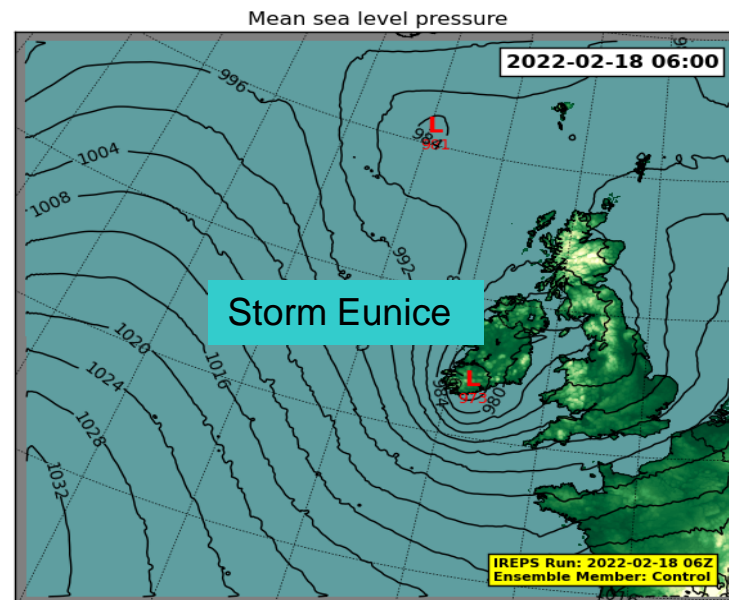
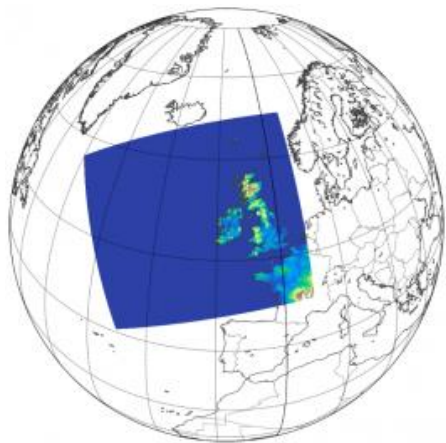
Global model Apps
Resolution typically 9
to 12km



Met Éireann App
Local model
Resolution 2.5km



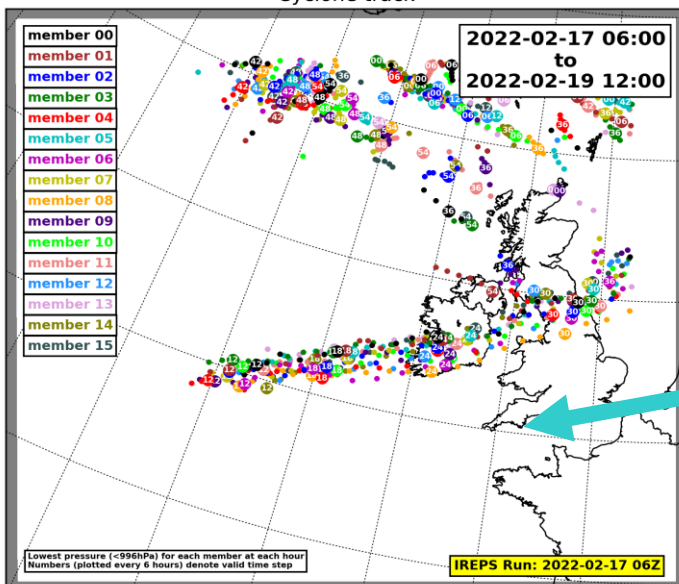
The Irish Regional Ensemble Prediction System (IREPS): A limited-area ensemble prediction system designed specifically for Ireland



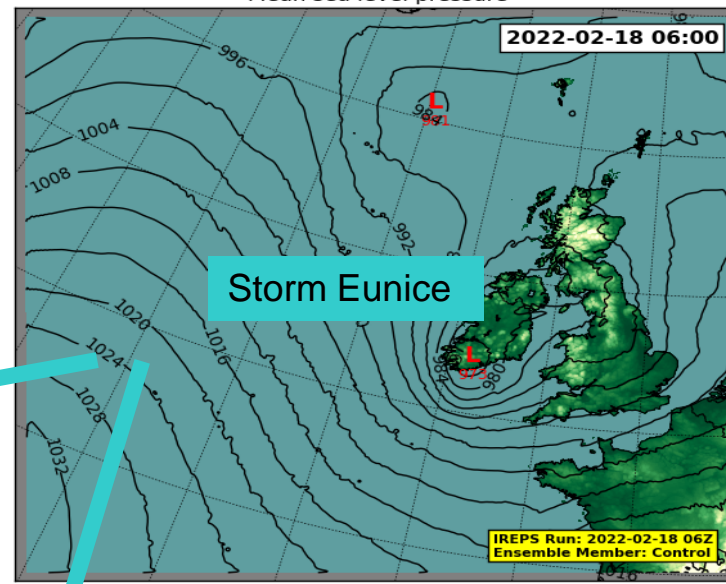
The Irish Regional Ensemble Prediction System (IREPS): A limited-area ensemble prediction system designed specifically for Ireland

16 members (individual forecasts) with a grid point every 2.5km

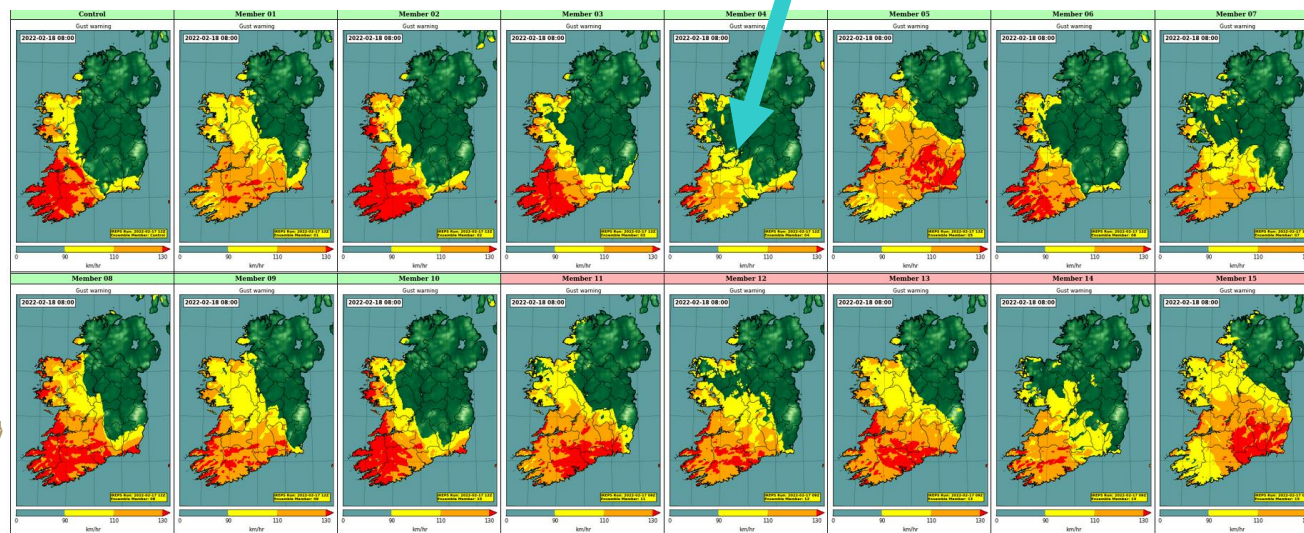
Cyclone track



Mean sea level pressure



Storm Eunice



Representing the sources of error

Ensemble of Data Assimilations

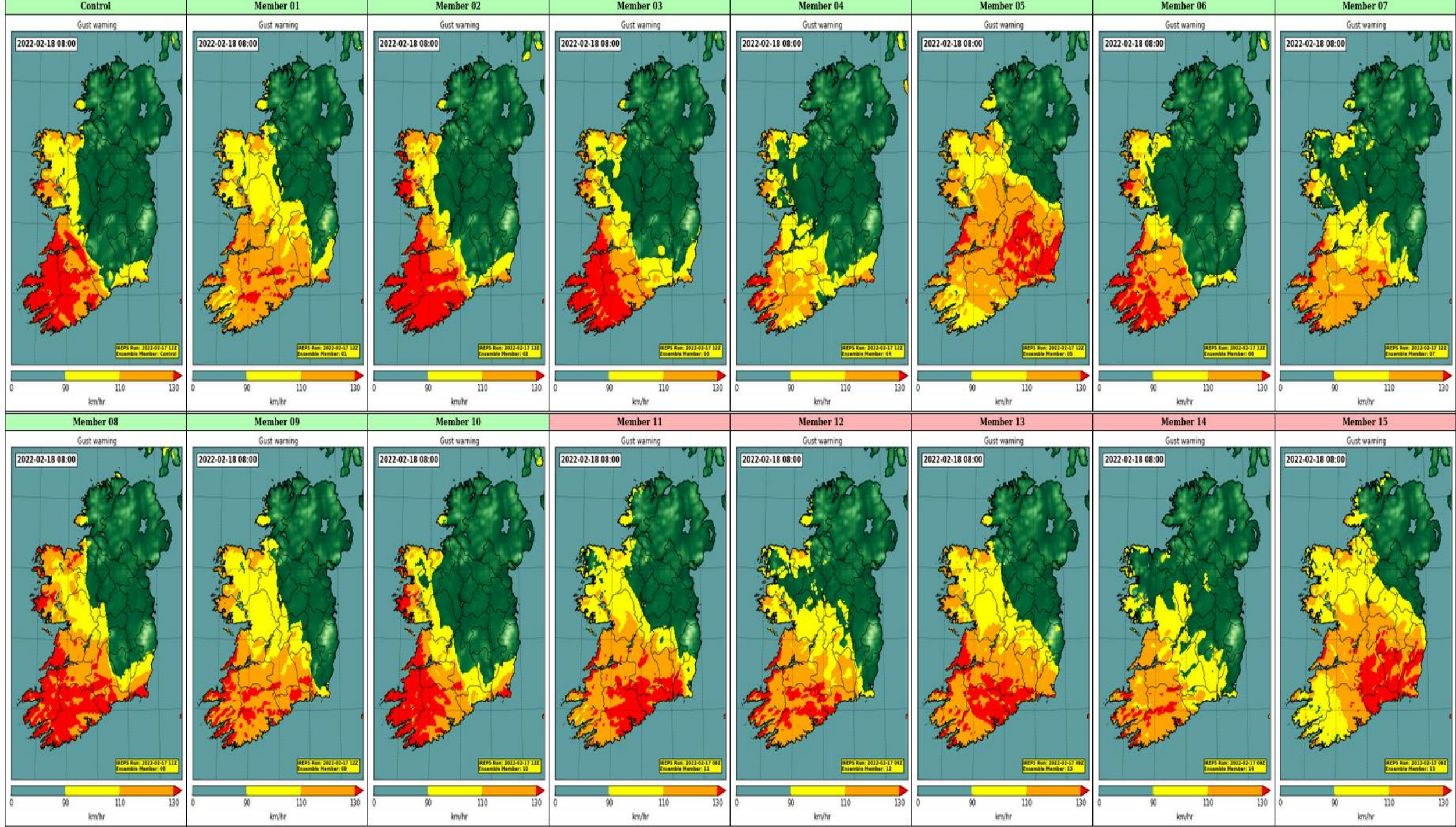
Helps to alleviate errors caused by observations

Scaled Lagged Average Forecasting

Focuses on errors in initial conditions (chaos!)

Stochastic surface physics
Accounts for uncertainties in the model system (i.e. the way processes are approximated)

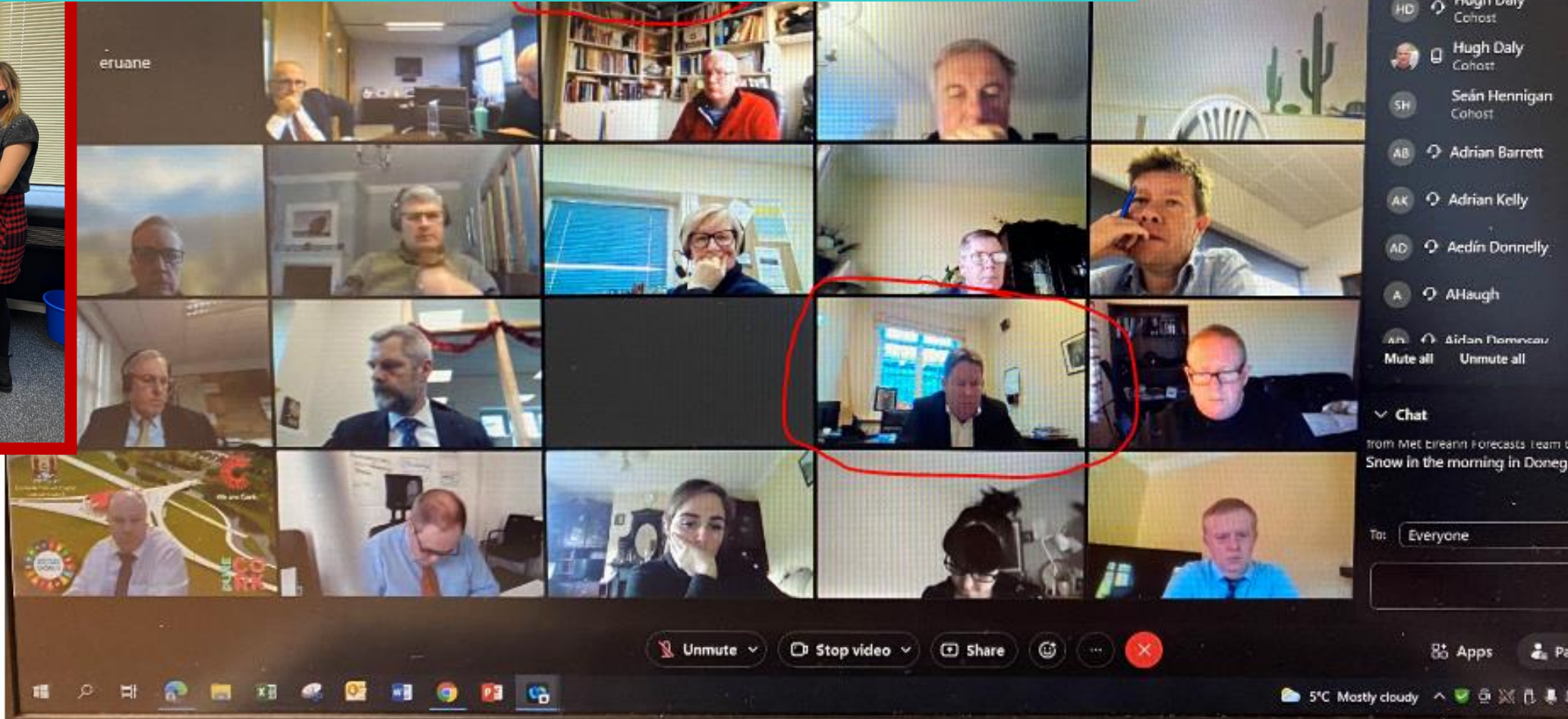




Now all Government Departments and the Local Authorities Severe Weather Emergency Groups are briefed via Webex. Also the Media (TV/Radio/Print) are briefed via Webex or live interviews on radio/TV

Conveying risk is easy in a matrix, graph etc

Advising on actions is hugely difficult.....close all schools etc?



Mean Wind and Gust

<https://www.met.ie/forecasts/ensemble-maps/mean-wind-and-gust>

Friday 13:00

Mean Wind

Met Éireann



Gust



Mean Wind and Gust

Ensemble Forecast Probability Maps

[6 Hour Precipitation](#)

[24 Hour Precipitation](#)

[Mean Wind and Gust](#)

[Temperature](#)

<https://www.met.ie/forecasts/listen-to-the-weather-forecast>



% chance



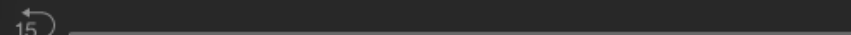
Wind chart shows forecast probabilities of hourly 10-metre wind speeds exceeding 50km/h, 65km/h or 80km/h.
Gust chart shows forecast probabilities of hourly 10-metre wind gusts exceeding 90km/h, 110km/h or 130km/h.



Ireland's Weather 12pm Thursday 9 June 2022

Jun 9 • Weather Forecast from Met Éireann

Follow

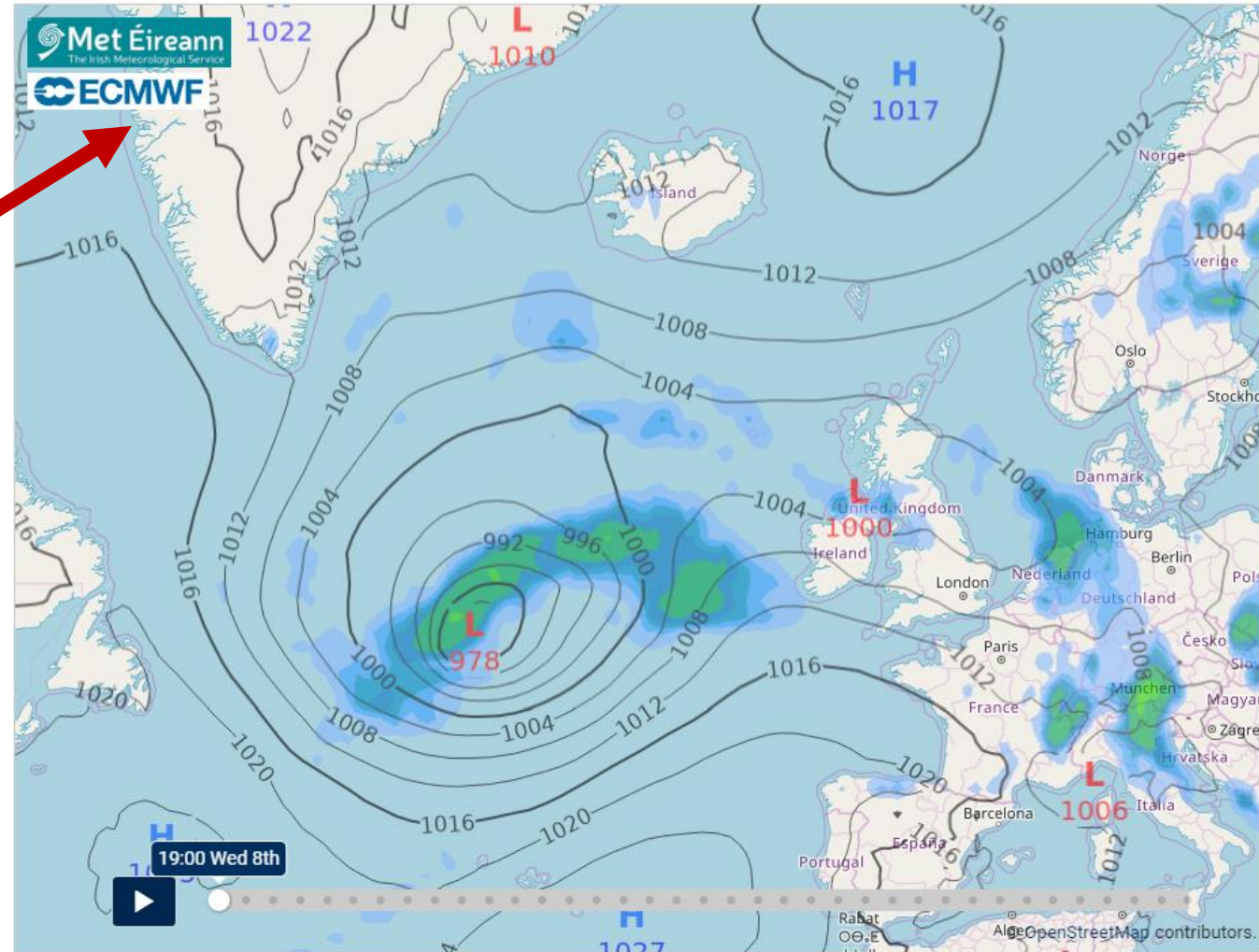


01:26

...



Atlantic Charts - Precipitation and Pressure



Atlantic Charts - Precipitation and Pressure

Atlantic Charts – Rain

Atlantic Charts – Airmass

Atlantic Charts – Airflow

Atlantic Charts – Wind Barbs



Met Éireann
36K Tweets

Island of Ireland 1900-2021 Temperature (°C) Anomalies (1961-1990)

Follow

Met Éireann
@MetEireann

The Irish Meteorological Service

📍 Ireland 🌐 met.ie 📅 Joined September 1

168 Following 315K Followers

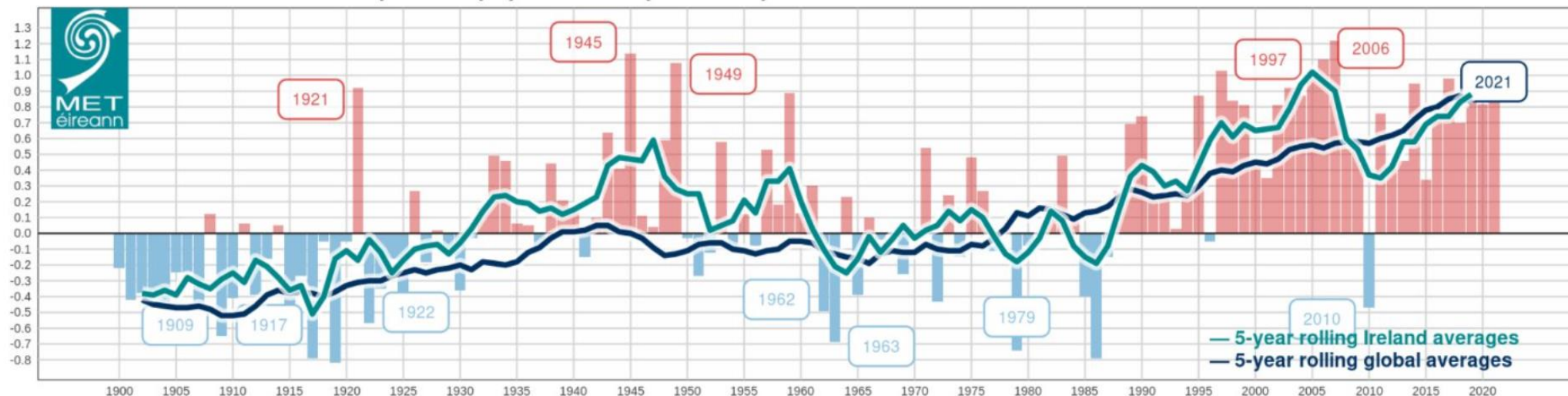
Tweets Tweets & replies

Met Éireann · 2h
A mixed or unsettled picture for the r
feeding in occasional showers & blus
N. 🌧️ 🌿

Somewhat drier & calmer conditions
weekend. 🌞

Atlantic Charts - Precipitation and

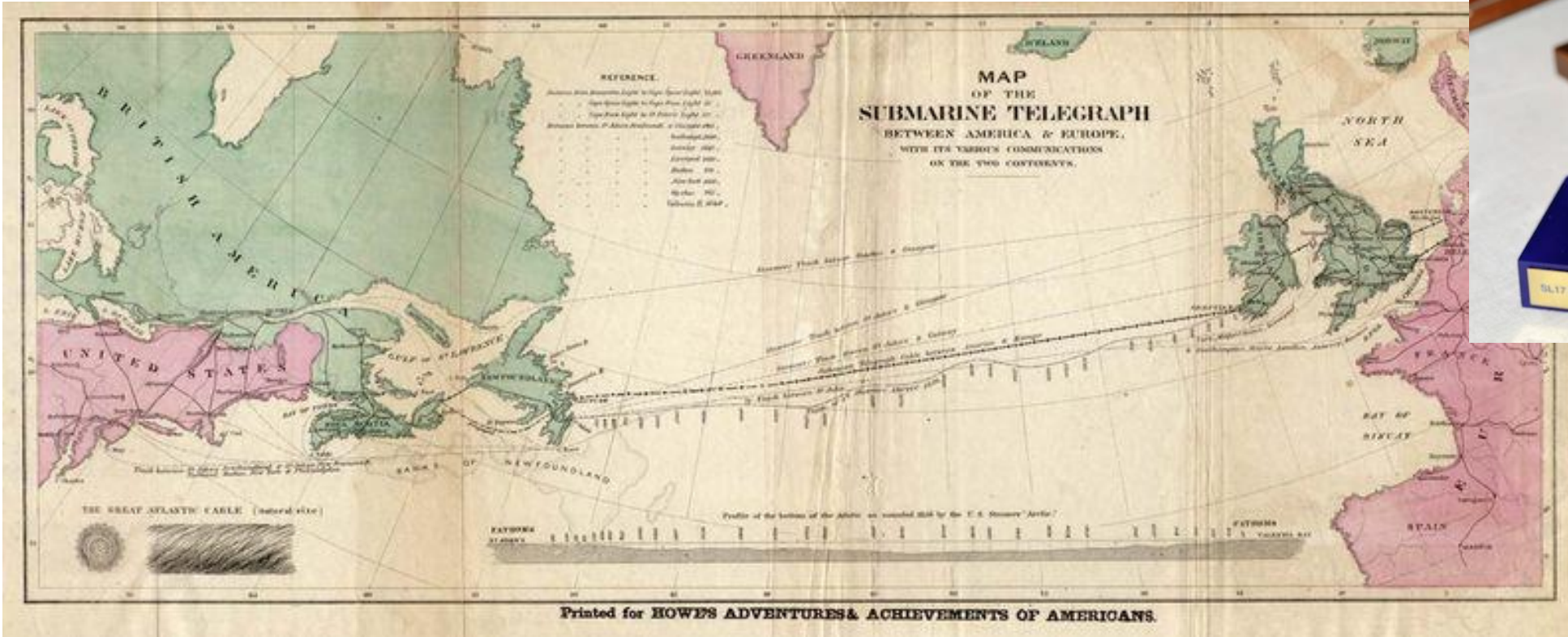
Island of Ireland 1900-2021 Temperature (°C) Anomalies (1961-1990)



Island of Ireland Temperature Anomalies/Difference from Annual Average (9.5°C) 1961-1990 inclusive Above Below

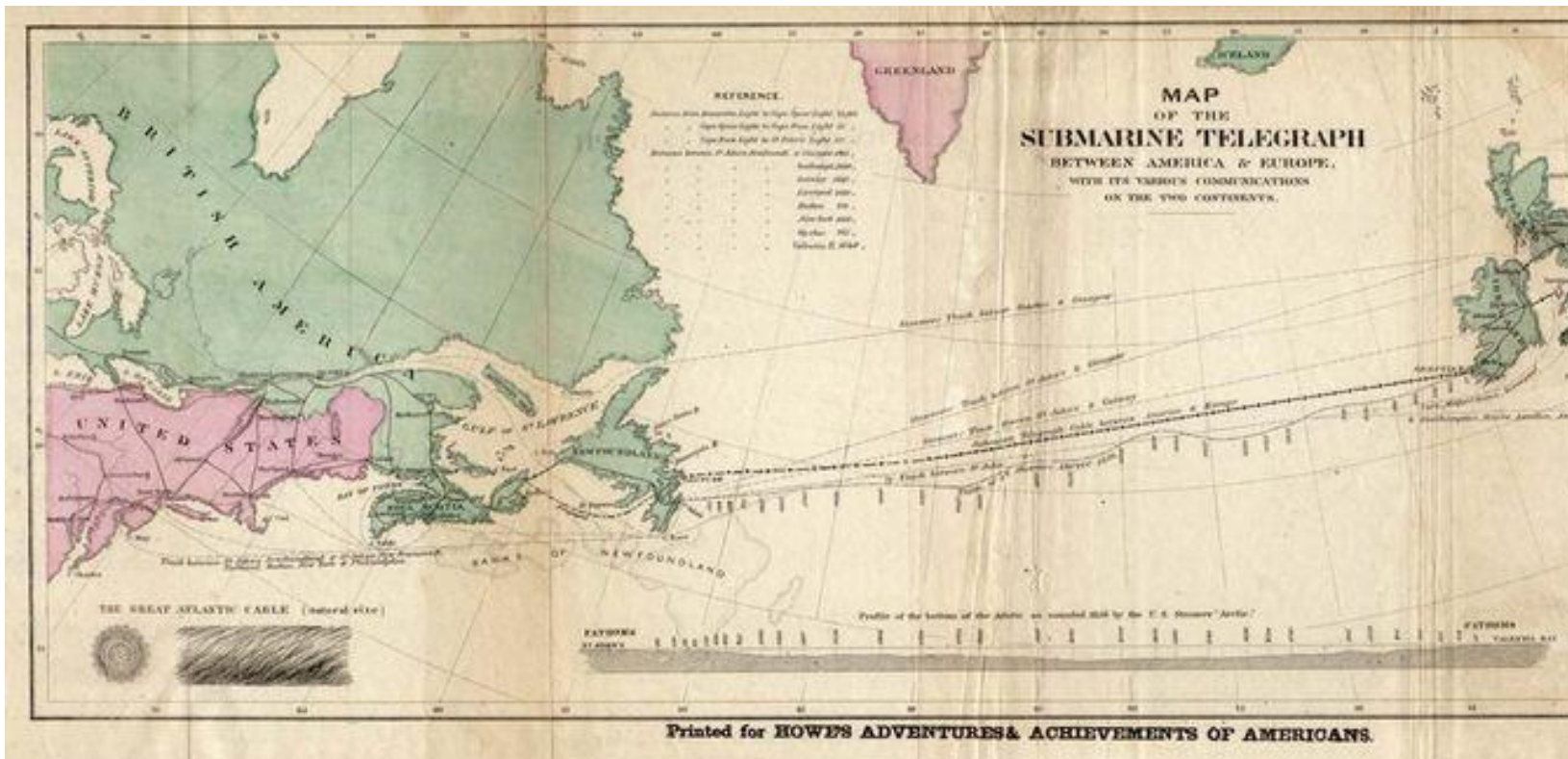
Data from Malin Head, Binn/Gurteen, Phoenix Park, Valentia Observatory and Armagh Observatory (Armagh data courtesy of Met Office, UK) Global Temperature Anomalies: HadCRUT5 Near-Global (Land+Sea), Climatic Research Unit, University of East Anglia | Wednesday 1 June 2022

Transatlantic cable at Valentia Island, Co Kerry, 1858



Fitzroy's First weather forecast

1st August, 1861



THE WEATHER.

METEOROLOGICAL REPORTS.

Wednesday, July 31, 8 to 9 a.m.	B.	E.	M.	D.	F.	C.	I.	S.
Nairn.. ..	29.54	57	56	W.S.W.	6	9	o.	3
Aberdeen ..	29.60	59	54	S.S.W.	5	1	b.	3
Leith	29.70	61	55	W.	3	5	c.	2
Berwick ..	29.69	59	55	W.S.W.	4	4	c.	2
Ardrossan ..	29.73	57	55	W.	5	4	c.	5
Portrush ..	29.72	57	54	S.W.	2	2	b.	2
Shields ..	29.80	59	54	W.S.W.	4	5	o.	3
Galway ..	29.83	65	62	W.	5	4	c.	4
Scarborough ..	29.86	59	56	W.	3	6	c.	2
Liverpool ..	29.91	61	56	S.W.	2	8	c.	2
Valentia ..	29.87	62	60	S.W.	2	5	o.	3
Queenstown ..	29.88	61	59	W.	3	5	c.	2
Yarmouth..	30.05	61	59	W.	5	2	c.	3
London ..	30.02	62	56	S.W.	3	2	b.	—
Dover.. ..	30.04	70	61	S.W.	3	7	o.	2
Portsmouth ..	30.01	61	59	W.	3	6	o.	2
Portland ..	30.03	63	59	S.W.	3	2	c.	3
Plymouth..	30.00	62	59	W.	5	1	b.	4
Penzance ..	30.04	61	60	S.W.	2	6	c.	3
Copenhagen ..	29.94	64	—	W.S.W.	2	6	c.	3
Helder ..	29.99	63	—	W.S.W.	6	5	c.	3
Brest ..	30.09	60	—	S.W.	2	6	c.	5
Bayonne ..	30.13	68	—	—	—	9	m.	5
Lisbon ..	30.18	70	—	N.N.W.	4	3	b.	2

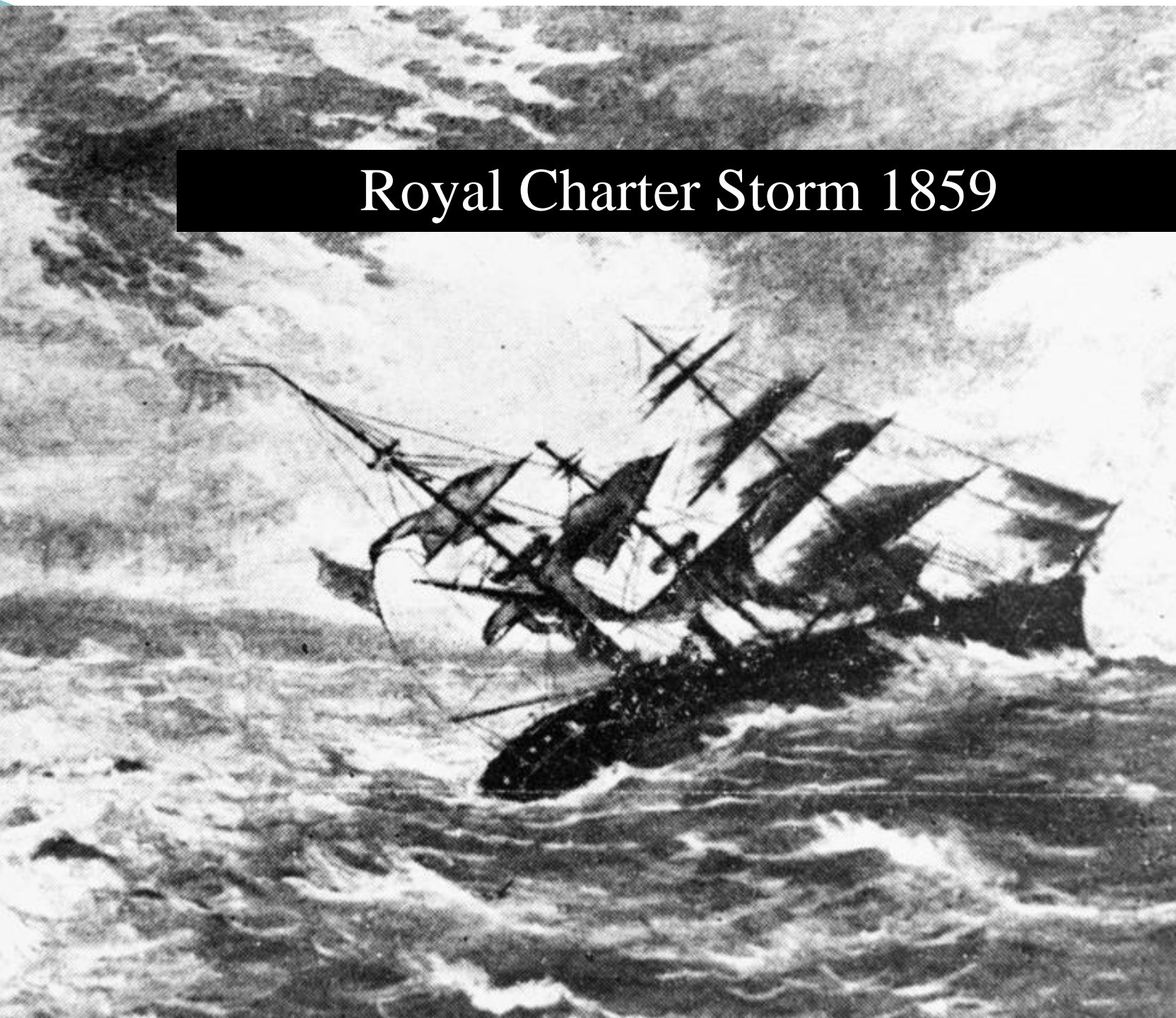
General weather probable during next two days in the—
 North—Moderate westerly wind; fine.
 West—Moderate south-westerly; fine.
 South—Fresh westerly; fine.

Explanation.

B. Barometer, corrected and reduced to 32° at mean sea level; each 10 feet of vertical rise causing about one-hundredth of an inch diminution, and each 10° above 32° causing nearly three-hundredths increase. E. Exposed thermometer in shade. M. Moistened bulb (for evaporation and dew-point). D. Direction of wind (true—two points left of magnetic). F. Force (1 to 12—estimated). C. Cloud (1 to 9). I. Initials:—b., blue sky; c., clouds (detached); f., fog; h., hail; l., lightning; m., misty (hazy); o., overcast (dull); r., rain; s., snow; t., thunder. S. Sea disturbance (1 to 9).



Royal Charter Storm 1859



THE WEATHER.

METEOROLOGICAL REPORTS.

Wednesday, July 31, 8 to 9 a.m.	B.	E.	M.	D.	F.	C.	I.	S.
Nairn... ..	29.54	57	56	W.S.W.	6	9	o.	3
Aberdeen	29.60	59	54	S.S.W.	5	1	b.	3
Leith	29.70	61	55	W.	3	5	c.	2
Berwick	29.69	59	55	W.S.W.	4	4	c.	2
Ardrossan .. .	29.73	57	55	W.	5	4	c.	5
Portrush	29.72	57	54	S.W.	2	2	b.	2
Shields	29.80	59	54	W.S.W.	4	5	o.	3
Galway	29.83	65	62	W.	5	4	c.	4
Scarborough ..	29.86	59	56	W.	3	6	c.	2
Liverpool	29.91	61	56	S.W.	2	8	c.	2
Valentia	29.87	62	60	S.W.	2	5	o.	3
Queenstown ..	29.88	61	59	W.	3	5	c.	2
Yarmouth.. ..	30.05	61	59	W.	5	2	c.	3
London	30.02	62	56	S.W.	3	2	b.	—
Dover.. .. .	30.04	70	61	S.W.	3	7	o.	2
Portsmouth ..	30.01	61	59	W.	3	6	o.	2
Portland	30.03	63	59	S.W.	3	2	c.	3
Plymouth.. ..	30.00	62	59	W.	5	1	b.	4
Penzance	30.04	61	60	S.W.	2	6	c.	3
Copenhagen ..	29.94	64	—	W.S.W.	2	6	c.	3
Helder	29.99	63	—	W.S.W.	6	5	c.	3
Brest	30.09	60	—	S.W.	2	6	c.	5
Bayonne	30.13	68	—	—	—	9	m.	5
Lisbon	30.18	70	—	N.N.W.	4	3	b.	2

General weather probable during next two days in the—

North—Moderate westerly wind; fine.

West—Moderate south-westerly; fine.

South—Fresh westerly; fine.

Explanation.

B. Barometer, corrected and reduced to 32° at mean sea level; each 10 feet of vertical rise causing about one-hundredth of an inch diminution, and each 10° above 32° causing nearly three-hundredths increase. E. Exposed thermometer in shade. M. Moistened bulb (for evaporation and dew-point). D. Direction of wind (true—two points left of magnetic). F. Force (1 to 12—estimated). C. Cloud (1 to 9). I. Initials:—b., blue sky; c., clouds (detached); f., fog; h., hail; l., lightning; m., misty (hazy); o., overcast (dull); r., rain; s., snow; t., thunder. S. Sea disturbance (1 to 9).

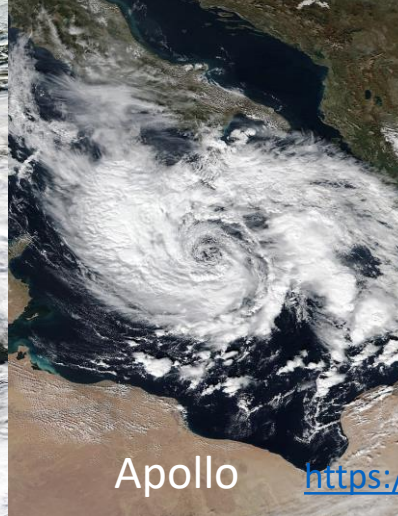
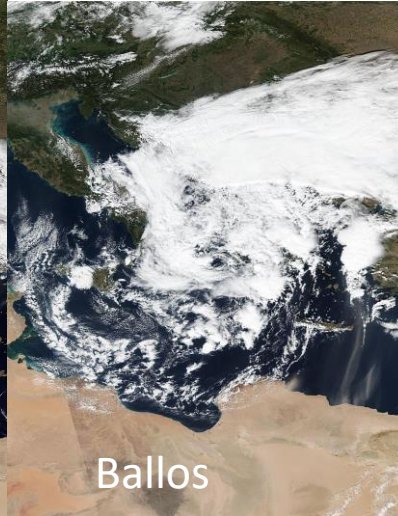
What's in a name? That which we
call a rose by any other name
would smell as sweet.

William Shakespeare

www.thequotes.in



There was confusion.....Media/Social Media
were naming storms so too were commercial
weather companies and a few National Met
Services



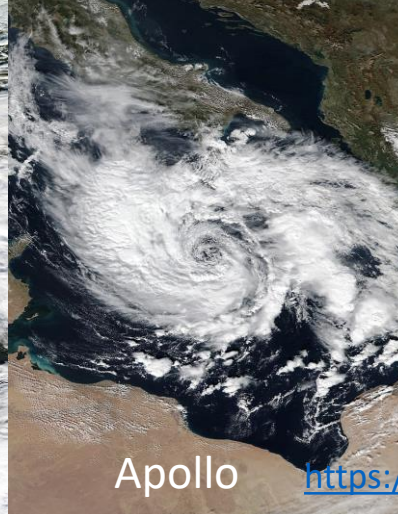
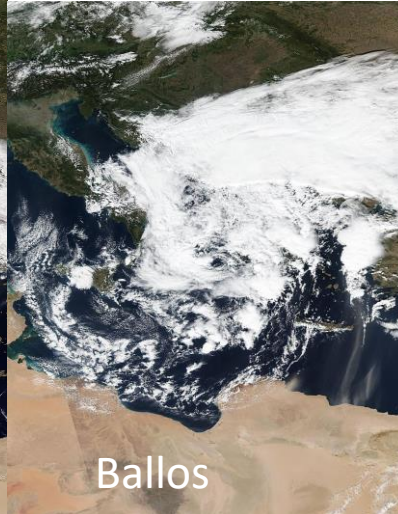
<https://worldview.earthdata.nasa.gov/>

EUMETNET Storm Naming in Europe WGCEF

Working Group Co-operation European Forecasters
Dublin 2019 www.marshlibrary.ie

Chair: Christian.csekits@zamag.ac.at
Vice chair: jos.diepeveen@knmi.nl





EUMETNET Storm Naming in Europe WGCEF

Working Group Co-operation European Forecasters

Remote meeting: 11th & 12th Nov 2021

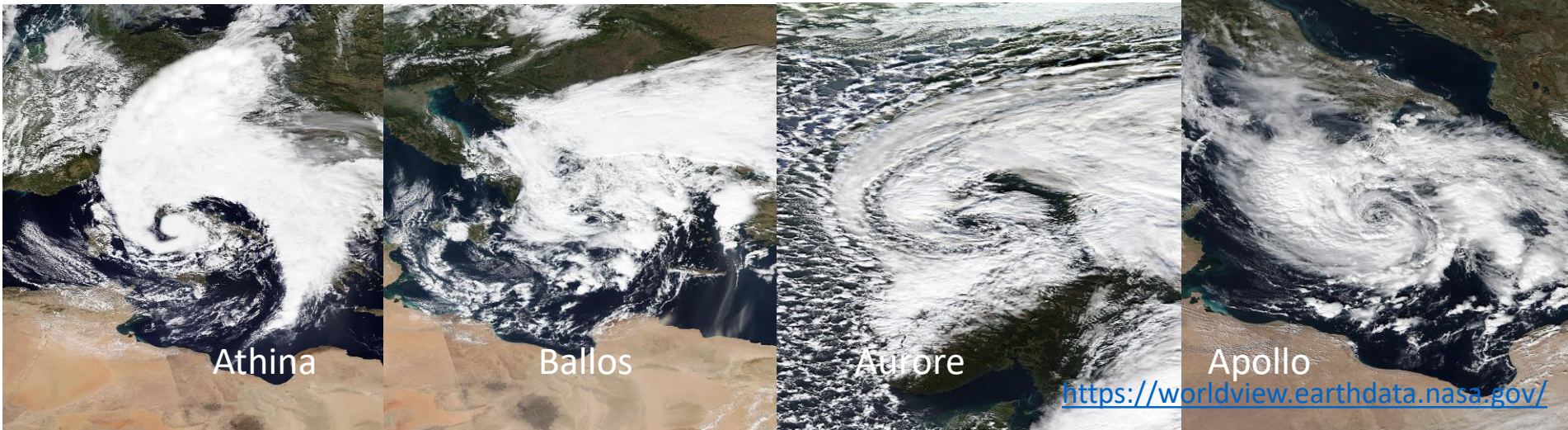
Copenhagen: 27th & 28th June 2022

Remote: 11th & 12th November 2022

Chair: Christian.csekits@zamag.ac.at

Vice chair: jos.diepeveen@knmi.nl





WHY?.....Storm Naming in Europe

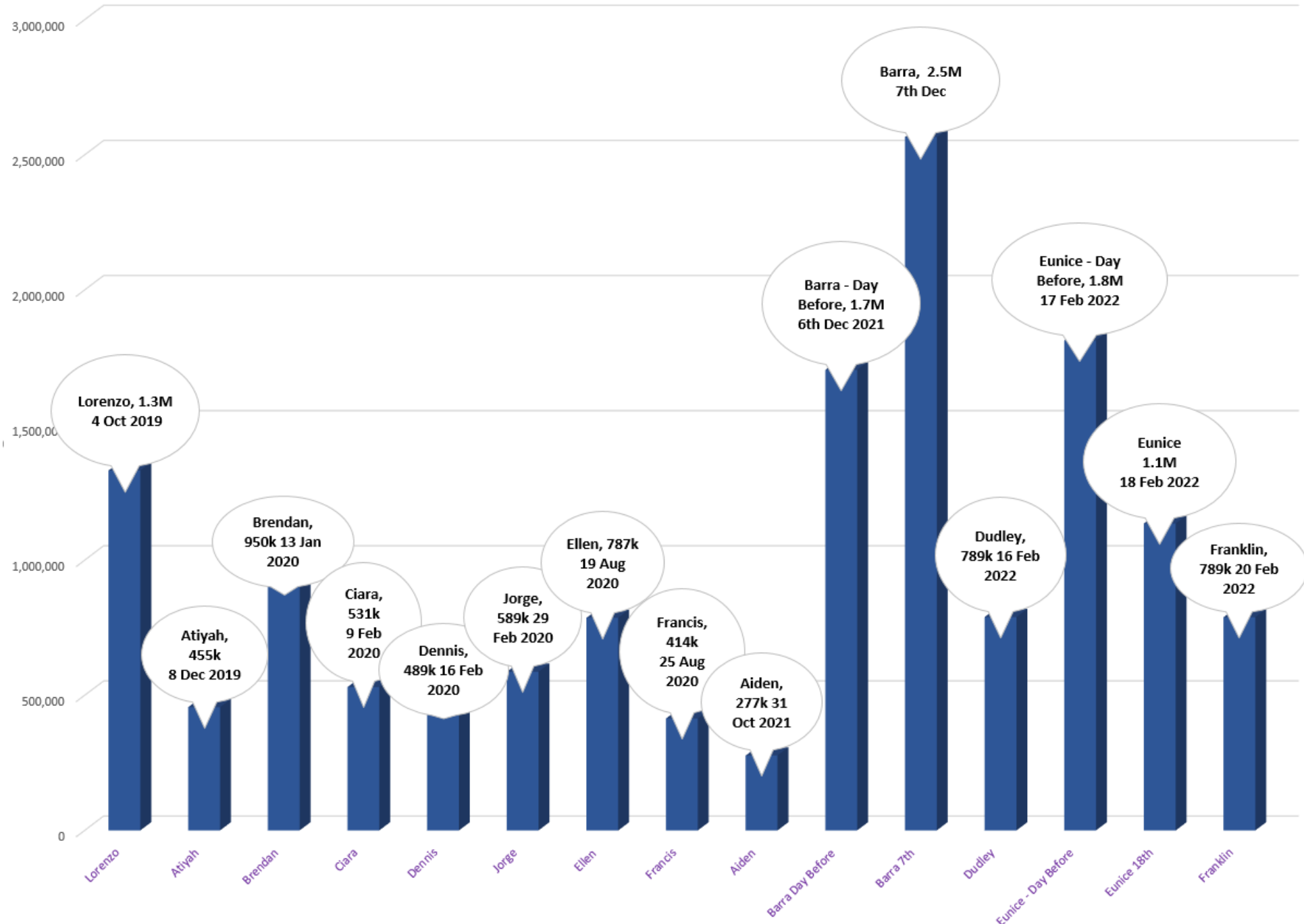
Reach, engagement and influence for warnings
Authoritative Voice
Single name
Communication: 'hashtag culture'
Collaboration with adjoining NMS's
Useful post-event for reference

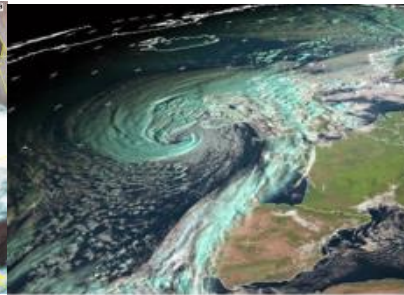
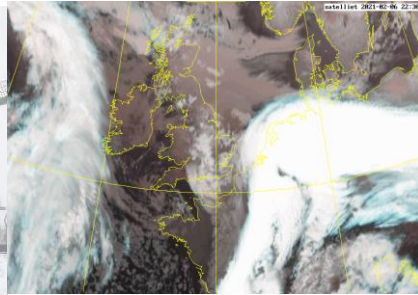


Met Éireann App:
Sign up for land and
marine warnings
notifications on
your smartphone.



An Roinn Tithíochta,
Rialtais Áitiúil agus Oidhreachta
Department of Housing,
Local Government and Heritage



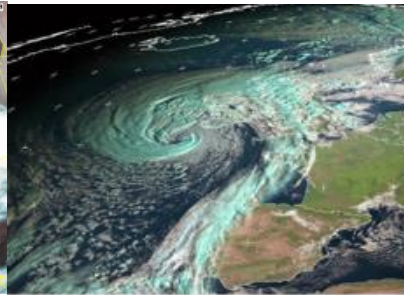
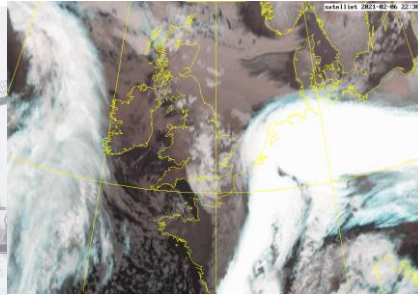


HOW?.....Storm Naming in Europe

Storm depression (large depression not a local wind)

Based on Warnings in the Meteoalarm framework ORANGE or REDimpact-based and/or thresholds. Can be for wind, rain or snow

NMS which a) first issues the warning or b) the NMS who expects high impacts names the Storm/low pressure system in consultation with other partners.



HOW?.....Storm Naming in Europe

Storm depression (large depression not a local wind)

Based on Warnings in the Meteoalarm framework ORANGE or REDimpact-based and/or thresholds. Can be for wind, rain or snow

NMS which a) first issues the warning or b) the NMS who expects high impacts names the Storm/low pressure system in consultation with other partners.

It keeps its name given by a NMS & NHC Miami

Names picked by NMS's (public suggestions and/or communications division in NMS)

Storm Darcy – 8th Feb 2021

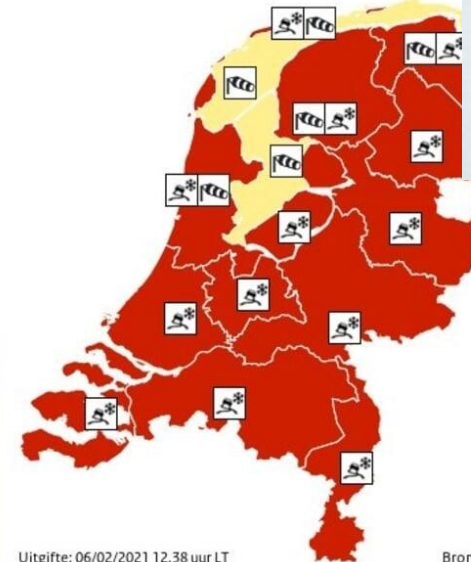
- Named by KNMI for snow impacts in the Netherlands
- Widespread transport disruption, power, schools, vaccination/testing centres



KNMI @KNMI · 5 Feb
Het KNMI heeft het lagedrukgebied dat zondag voor #sneeuwjacht gaat zorgen een naam gegeven: #stormDarcy. We verwachten #sneeuw, een krachtige wind en temperaturen onder nul. In combinatie met ophopingen van #sneeuw en #gladheid kan dit gevaarlijke situaties opleveren.

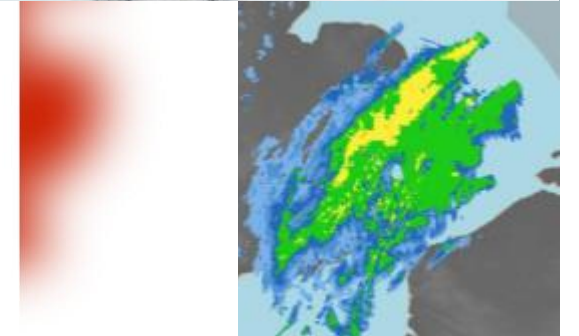


Amber warning
Snow
Between
04:00 Sun 7 Feb 2021 and
08:00 Mon 8 Feb 2021



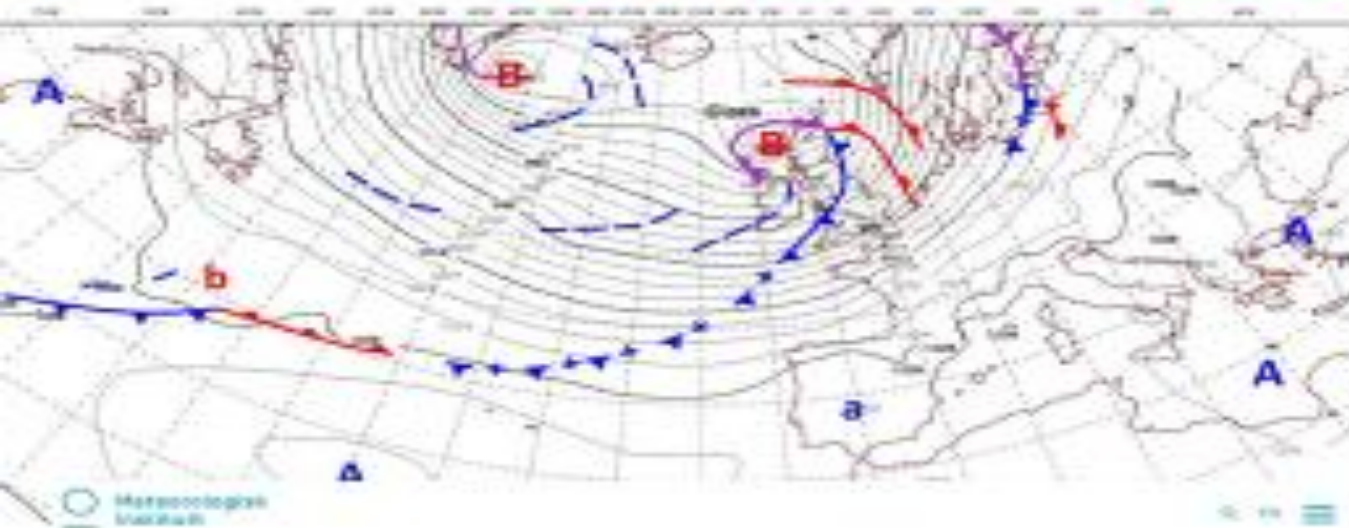
Uitgifte: 06/02/2021 12:38 uur LT

Bron: KNMI





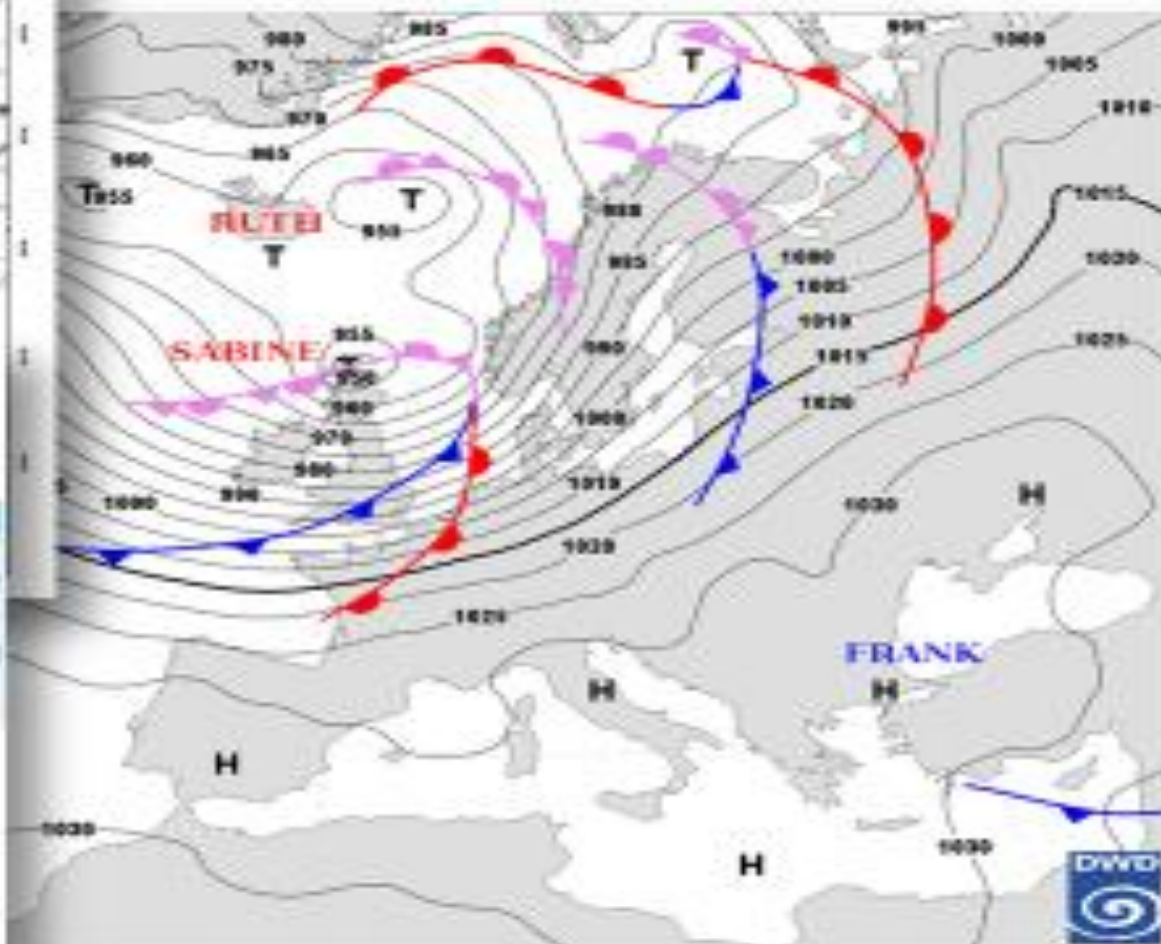
Ciara or Sabine or Elsa?

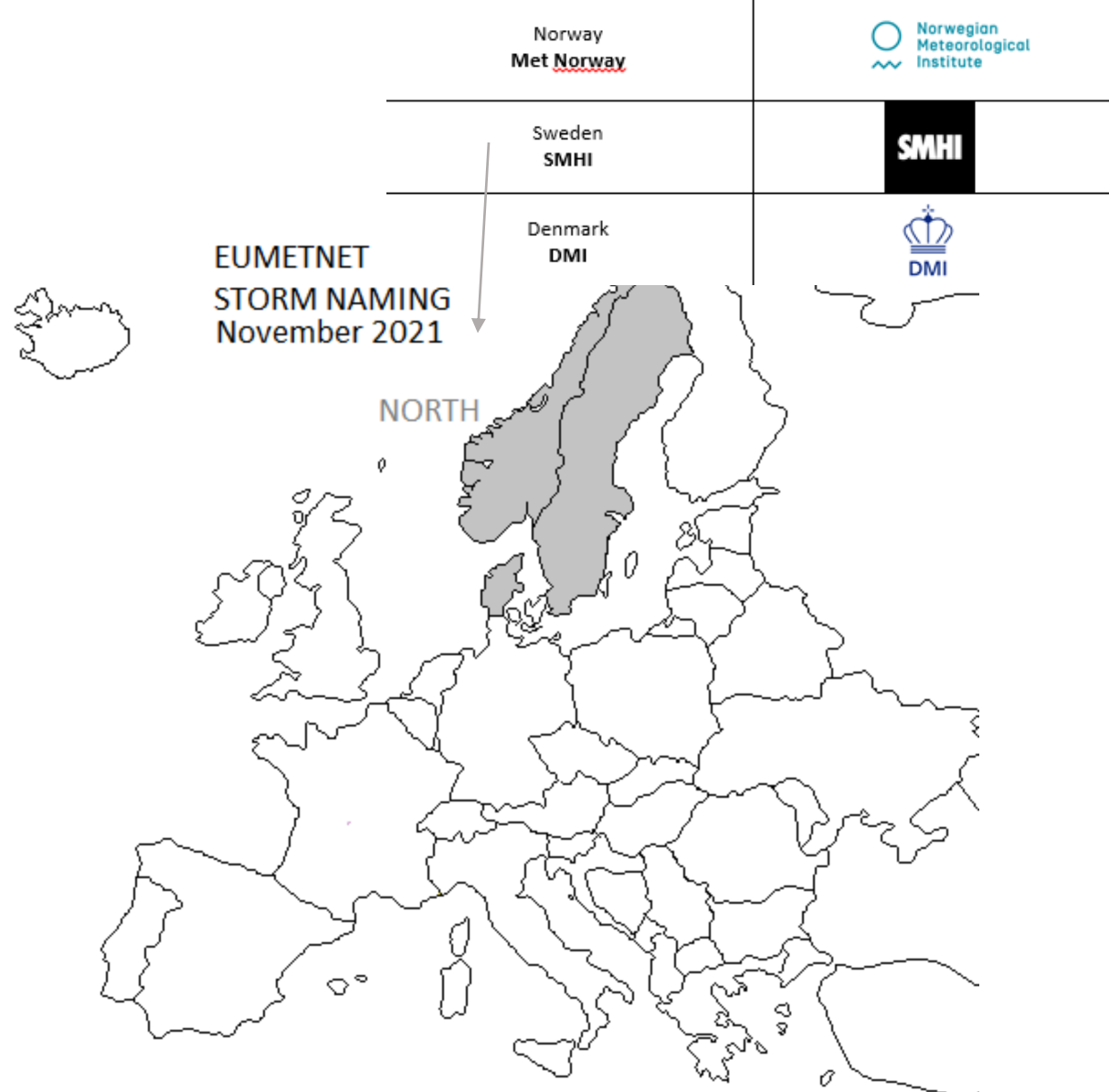





Ekstremværet Elsa er over




Det siste ekstremværet i Norge er Elsa.

Ekstremværet 'Elsa' for høy vannstand er nå over, men det er fortsatt fare for høy vannstand i nordlige områder.













Ireland Met Éireann	
UK Met Office	
Netherlands KNMI	






Norway Met Norway	
Sweden SMHI	
Denmark DMI	






France Meteo France	
Spain AEMET	
Portugal IPMA	
Belgium RMI	
Luxembourg MeteoLux	



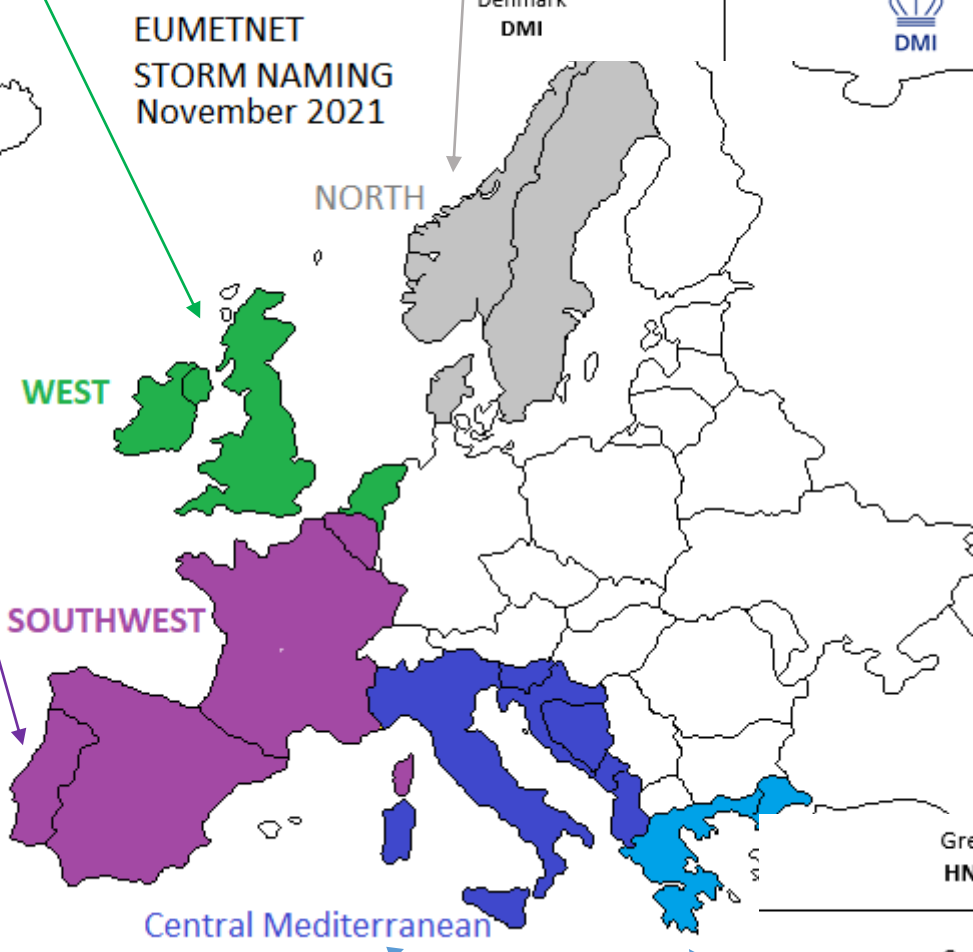
Ireland Met Éireann	
UK Met Office	
Netherlands KNMI	




France Meteo France	
Spain AEMET	
Portugal IPMA	
Belgium RMI	
Luxembourg MeteoLux	




Norway Met Norway	
Sweden SMHI	
Denmark DMI	







Italy Italian Air Force Meteorological Service	
Slovenia Slovenian Environment Agency	 ARSO METEO Slovenian Environment Agency
Croatia DHMZ	
North Macedonia YXMP	
Montenegro IHMS	
Malta Malta Meteorological Office	





Greece HNMS	
Cyprus Department of Meteorology of Cyprus	
Israel IMS	








Ireland Met Éireann	
UK Met Office	
Netherlands KNMI	




France <u>Meteo France</u>	
Spain AEMET	
Portugal IPMA	
Belgium RMI	
Luxembourg <u>MeteoLux</u>	

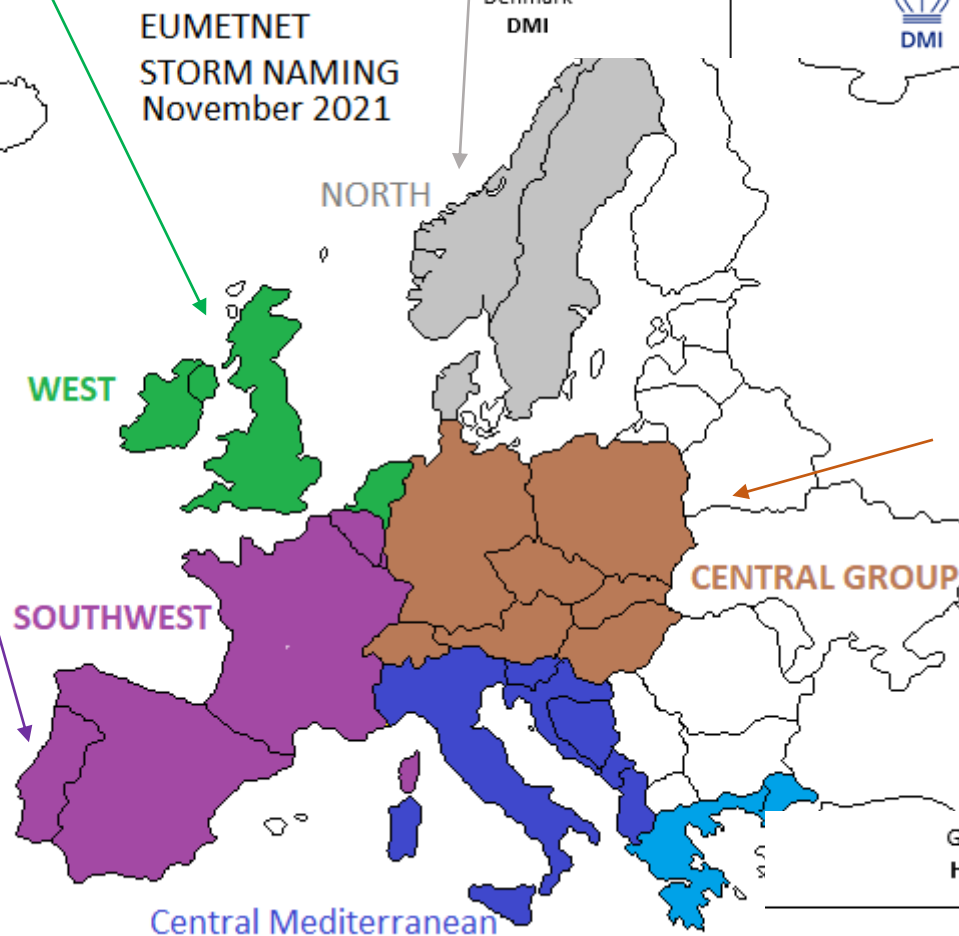
Italy Italian Air Force Meteorological Service	
Slovenia Slovenian Environment Agency	
Croatia DHMZ	
North Macedonia YXMP	
Montenegro IHMS	
Malta Malta Meteorological Office	

Norway <u>Met Norway</u>	
Sweden SMHI	









Germany DWD	
Austria ZAMG	
Switzerland <u>Meteo Swiss</u>	
Poland IMGW-PIB	
Czech Republic CHMI	
Slovakia SHMU	
Hungary Met Hungary	

Greece HNMS	
Cyprus Department of Meteorology of Cyprus	
Israel IMS	

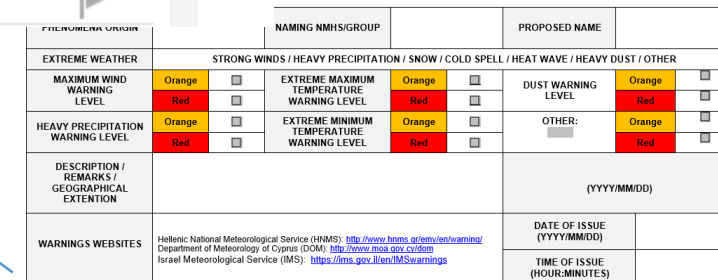


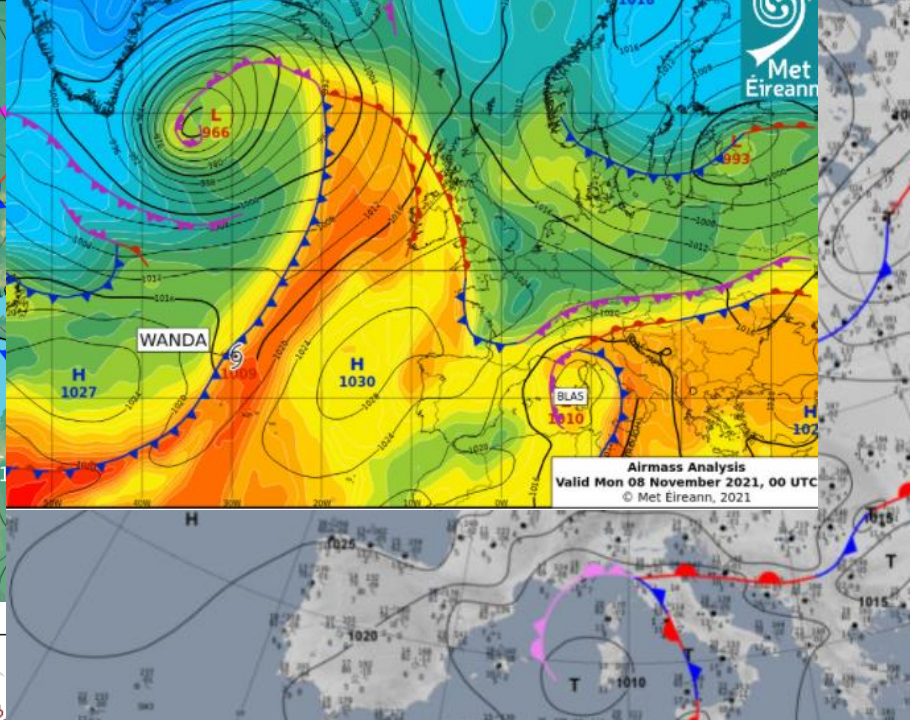
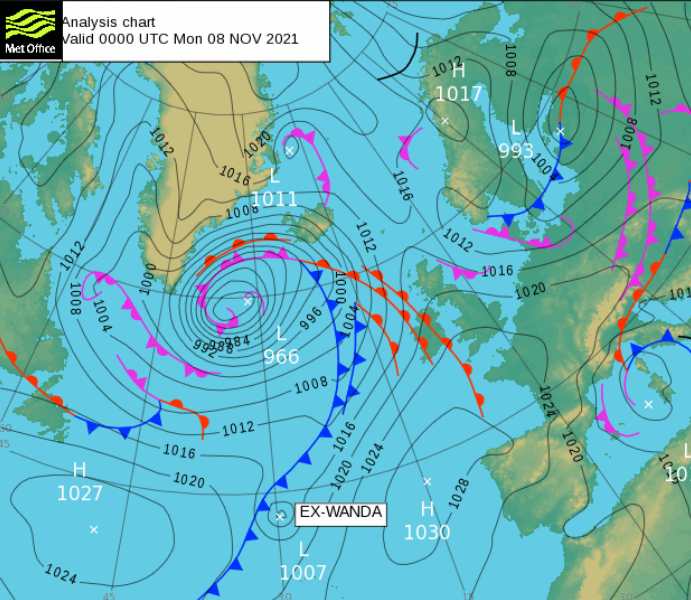
STORM NAMING COORDINATION FORM NORTH GROUP 2021/2022						stormnaming@eumetnet.eu	
PROPOSED NAME				FORECASTED LOW CENTRE LOCATION (at first orange/red wind warning onset time)		Latitude (in decimals)	
NAMING NMHS/GROUP						Longitude (in decimals)	
FIRST WIND WARNING ISSUING		DATE (YYYYMMDD)		FIRST WIND WARNING ONSET		DATE (YYYYMMDD)	
		TIME (HH:MM UTC)				TIME (HH:MM UTC)	
MAXIMUM WIND WARNING LEVEL		Orange		OTHER ORANGE/RED WARNINGS ISSUED		Rain	Coastal event
		Red				Snow	Others
REMARKS							
WARNINGS WEBSITES		DMI: https://www.dmi.dk/varsel NMH: https://www.nm.no/en/veer/veervarsninger SMH: https://www.metoffice.gov.uk/public/weather/warnings		KNMI: https://www.knmi.nl/roerendheid/nieuws/veerschuifwening Met Eireann: https://www.mee.ie/warnings Met Office: https://www.metoffice.gov.uk/public/weather/warnings Meteoalarm: https://www.meteoalarm.net			

     					
STORM NAMING COORDINATION FORM SW GROUP 2021/22 stormnaming@eumetnet.eu					
PROPOSED NAME			FORECASTED LOW CENTRE LOCATION (at first orange/red wind warning onset time)	Latitude (in decimals)	
NAMING NMHS/GROUP				Longitude (in decimals)	
FIRST WIND WARNING ISSUING	DATE (YYYYMMDD)		FIRST WIND WARNING ONSET	DATE (YYYYMMDD)	
	TIME (HH-MM UTC)			TIME (HH-MM UTC)	
MAXIMUM WIND WARNING LEVEL	Orange		OTHER ORANGE/RED WARNINGS ISSUED	Rain	Coastal event
	Red			Snow	Others
REMARKS					
WARNINGS WEBSITES	Météo-France: https://vigilance.meteofrance.com/ AEMET: https://www.aemet.es/en/tempestad/predicciones/avisos IPMA: https://www.ipma.pt/en/tempestade/avisos/ MeteoLux: https://www.meteolux.lu/fr/vigilances/			KNMI: https://www.knmi.nl/nederland-nu/weer/voorschuwningen/ Met Eireann: https://www.met.ie/warnings/ Met Office: https://www.meteooffice.gov.uk/public-weather/warnings/ Meteoalarm: https://www.meteoalarm.org	



STORM NAMING COORDINATION FORM Central Mediterranean					
PROPOSED NAME		FORECASTED LOW CENTRE LOCATION (at first orange/red wind warning onset time)		(in decimals)	
NAMING NMHS/GROUP				Longitude (in decimals)	
FIRST WIND WARNING ISSUING		DATE (YYYYMMDD)	FIRST WIND WARNING ONSET	DATE (YYYYMMDD)	
		TIME (HH:MM UTC)		TIME (HH:MM UTC)	
MAXIMUM WIND WARNING LEVEL		Orange	OTHER ORANGERED WARNINGS ISSUED	Rain	Coastal event
		Red		Snow	Others
REMARKS					
WARNINGS WEBSITES		SMAM: http://www.meteom.fr/consulte_utilite_message ARSO METEO: http://www.meteo.xmets.lu/warnings/ DMZC: https://meteo.be/fr/avisance-avisances-avis-24h/avisances-avis-xmets YXMP: https://xmets.org/en/current-warnings/24h/en/en HWS: http://www.mets.co.uk or www.hws.org or www.malta.metoffice.org MALTA METOFFICE: http://www.maltaport.com/weather/		Météo-France: http://vigilance.meteofrance.com/ ARSO METEO: http://www.xmets.eu/en/etm/mgpa/red/orange/avisos IPMA: http://www.sinnm.eu/en/etm/mgpa/red/orange/avisos MétéoLux: https://www.meteolux.lu/fr/vigilances/ RMR: https://www.meteo.be/en/etm/mgpa/red/orange/avisos MétéoBelux: http://www.meteobelux.org/	

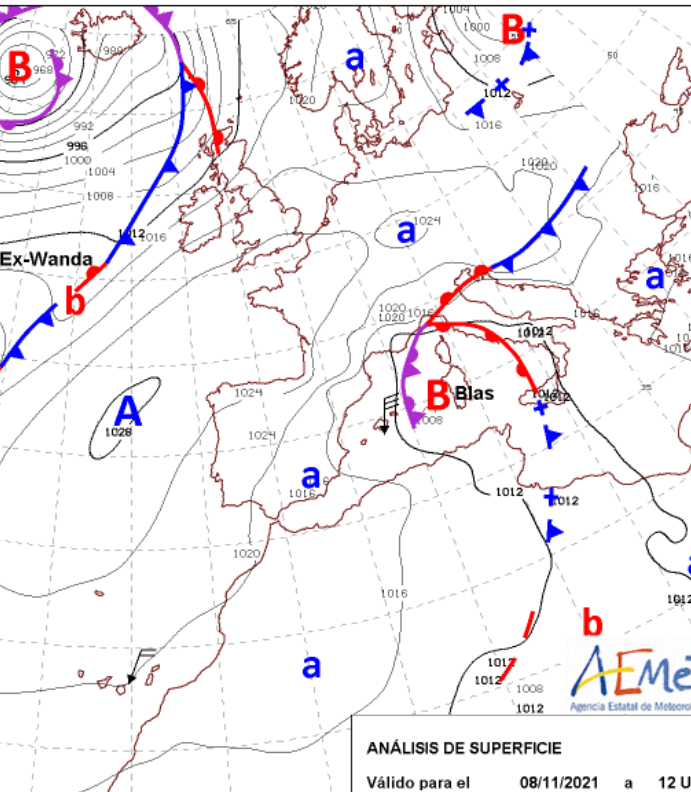
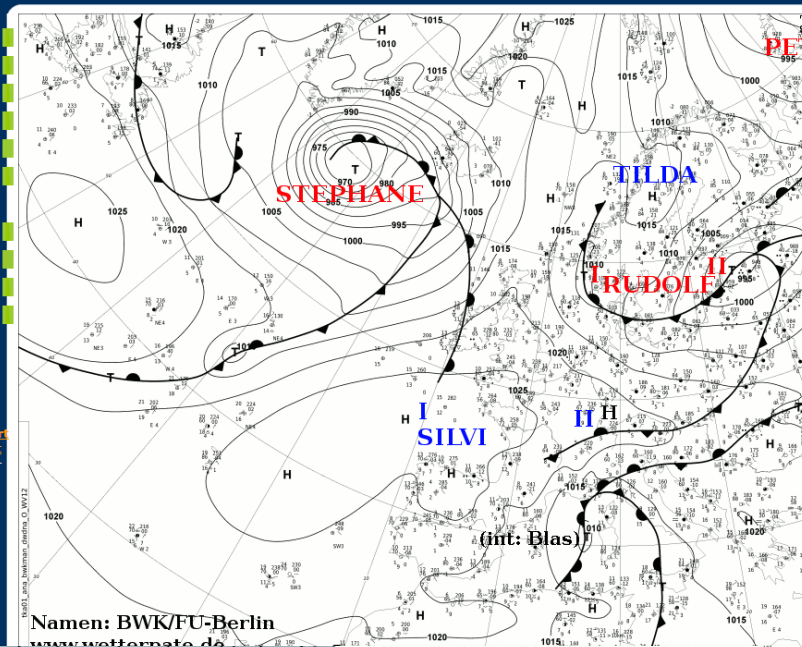




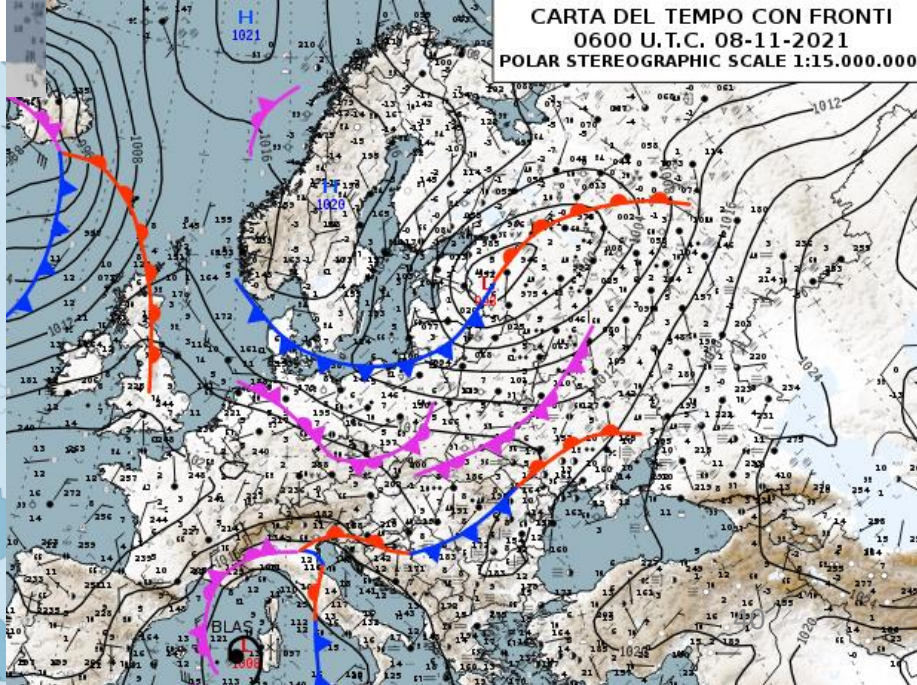
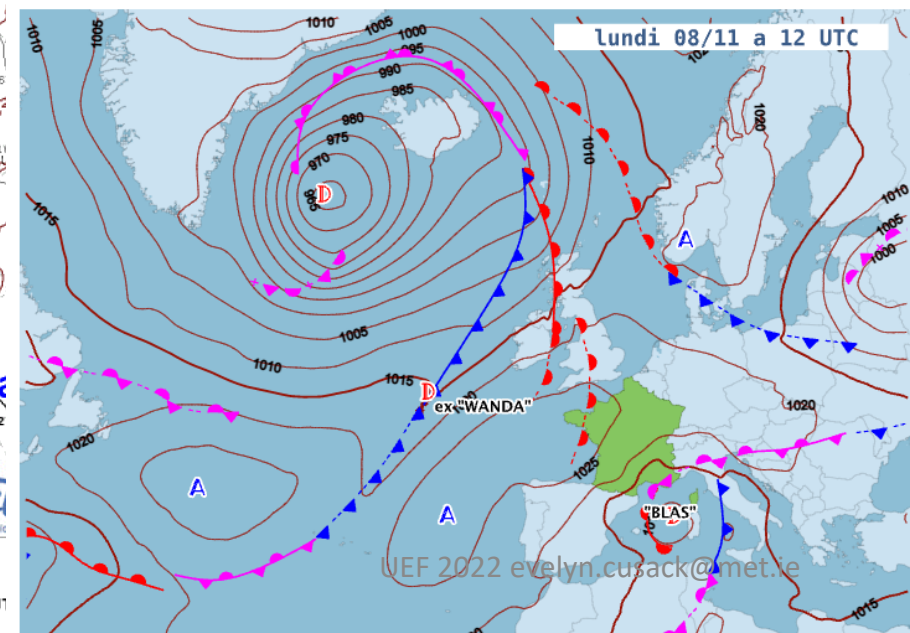
Home | Kontakt | E-Mail/Tel. | a-z Index | Intern

- Studium
- Veranstaltungen
- Bibliothek
- Wetterinfos
- Wetterpate
- Wetterdaten
- Wetterkarte
- Prognoseturnier
- Luftgüte
- DMG

aktuelle
Wassersaison
erhalten Sie
aktuelle
Wetterinformationen
und -Wassersport
Informationsdienst
erhalten Sie top-
aktuelle, speziell auf
den Wassersport
gestimmte
Wetterinfos für den
deutschen Raum.



METEO CARTES DE FRONTS







Caribbean Sea, Gulf of Mexico and the North Atlantic Names

2022

Alex
Bonnie
Colin
Danielle
Earl
Fiona
Gaston
Hermine
Ian
Julia
Karl
Lisa
Martin
Nicole
Owen
Paula
Richard
Shary
Tobias
Virginie
Walter

2023

Arlene
Bret
Cindy
Don
Emily
Franklin
Gert
Harold
Idalia
Jose
Katia
Lee
Margot
Nigel
Ophelia
Philippe
Rina
Sean
Tammy
Vince
Whitney

2024

Alberto
Beryl
Chris
Debby
Ernesto
Francine
Gordon
Helene
Isaac
Joyce
Kirk
Leslie
Milton
Nadine
Oscar
Patty
Rafael
Sara
Tony
Valerie
William

2025

Andrea
Barry
Chantal
Dexter
Erin
Fernand
Gabrielle
Humberto
Imelda
Jerry
Karen
Lorenzo
Melissa
Nestor
Olga
Pablo
Rebekah
Sebastien
Tanya
Van
Wendy

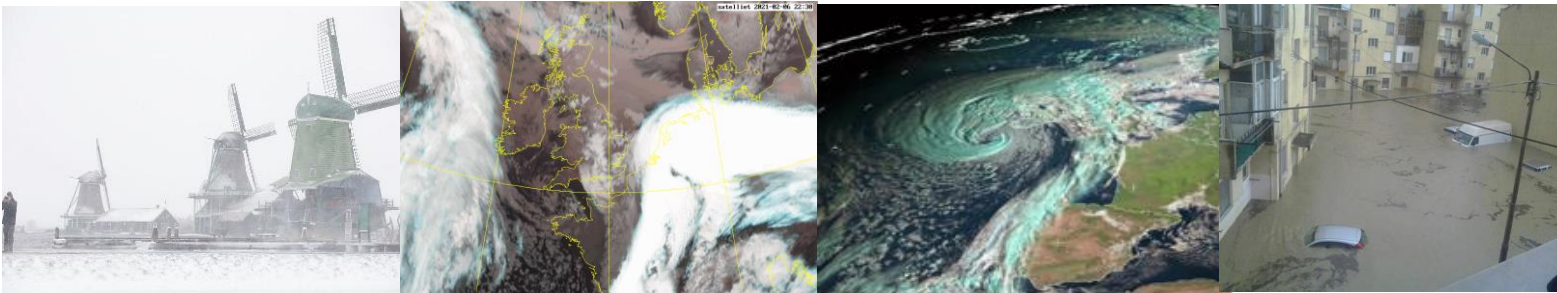
2026

Arthur
Bertha
Cristobal
Dolly
Edouard
Fay
Gonzalo
Hanna
Isaias
Josephine
Kyle
Leah
Marco
Nana
Omar
Paulette
Rene
Sally
Teddy
Vicky
Wilfred

2027

Ana
Bill
Claudette
Danny
Elsa
Fred
Grace
Henri
Imani
Julian
Kate
Larry
Mindy
Nicholas
Odette
Peter
Rose
Sam
Teresa
Victor
Wanda

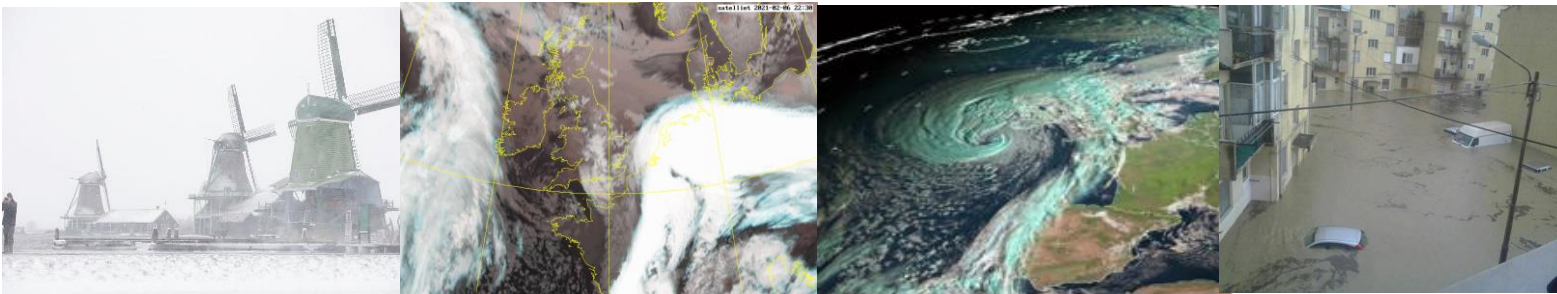
Since 1953, Atlantic tropical storms had been named from lists originated by the National Hurricane Center. They are now maintained and updated through a strict procedure by an international committee of the [World Meteorological Organization](#).



Storm Naming in Europe

Actions for WGCEF 27th/28th June 2022 Meeting in Copenhagen

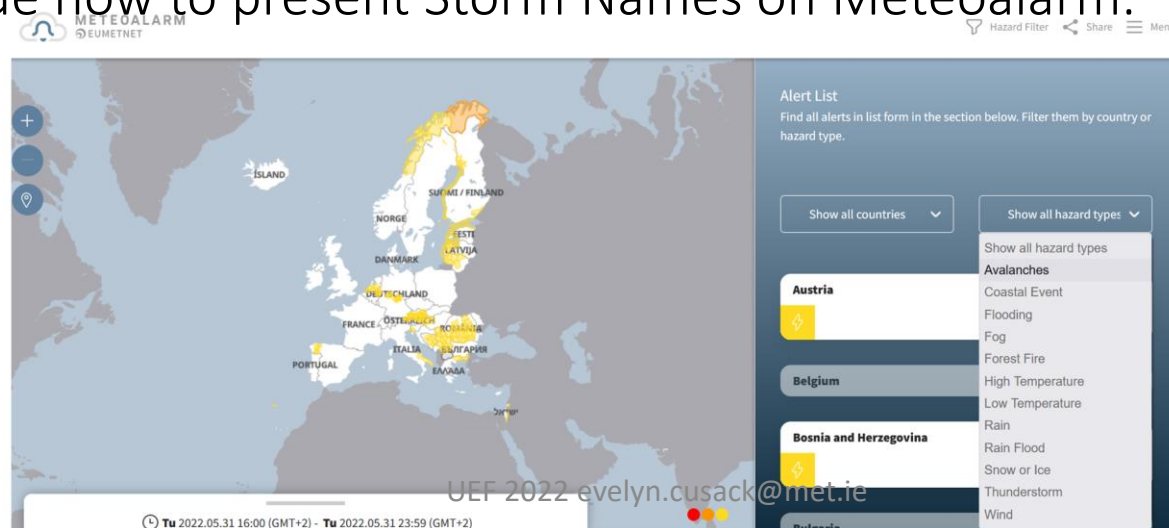
- 1) All Storm Naming Groups will present their proposed list of storm names for 2022/2023. The WGCEF forecasters will 'veto' the names to ensure that for the new season starting 1st September 2022 that when any one NMS names a storm all other NMSs will keep that name.

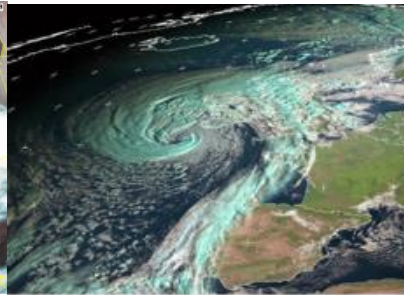
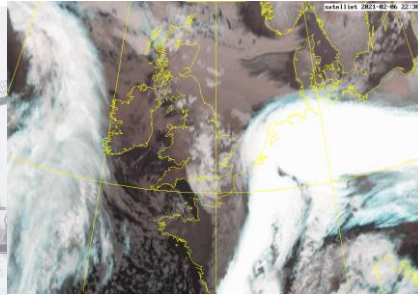


Storm Naming in Europe

Actions for WGCEF 27th/28th June 2022 Meeting in Copenhagen

- 1) All Storm Naming Groups will present their proposed list of storm names for 2022/2023. The WGCEF forecasters will 'veto' the names to ensure that for the new season starting 1st September 2022 that when any one NMS names a storm all other NMSs will keep that name.
- 2) We need to decide how to present Storm Names on Meteoalarm.





Storm Naming in Europe Consideration for ECMWF

- 1) Would you consider marking in the EUMETNET name of the storm on your analysis on your public website?
- 2) Is there a case for an ECMWF Analysis and short range sequence using the EUMETNET Storm Names? This would be a 'neutral' product (not affiliated to any one NMS and yet them all) and useable by all media and other non-NMS's as well as NMS's if they wished and perhaps by Meteoalarm as a new layer.



1982

UEF 2022 evelyn.cusack@met.ie

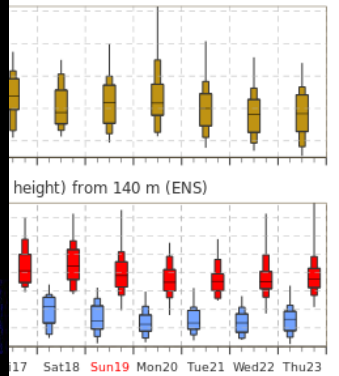
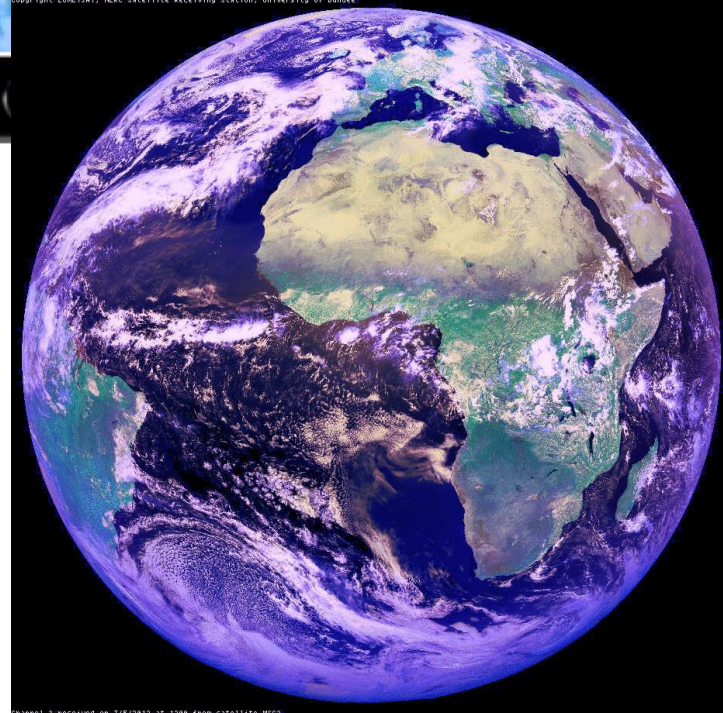
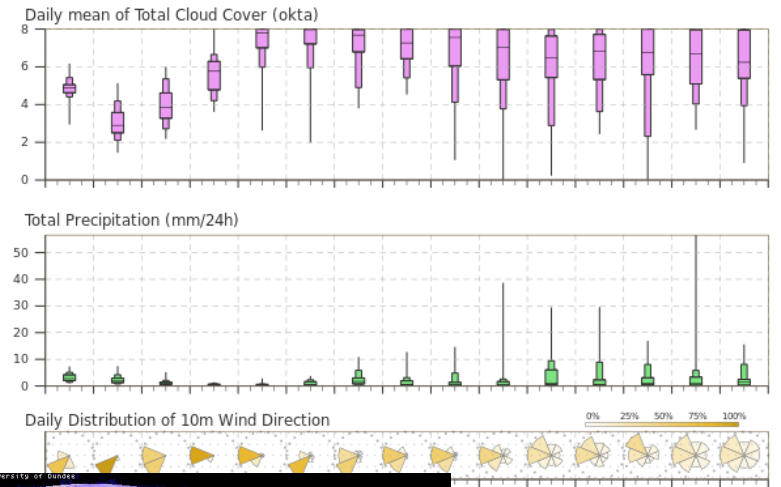


1982

UEF 2022 evelyn.cusack@met.ie

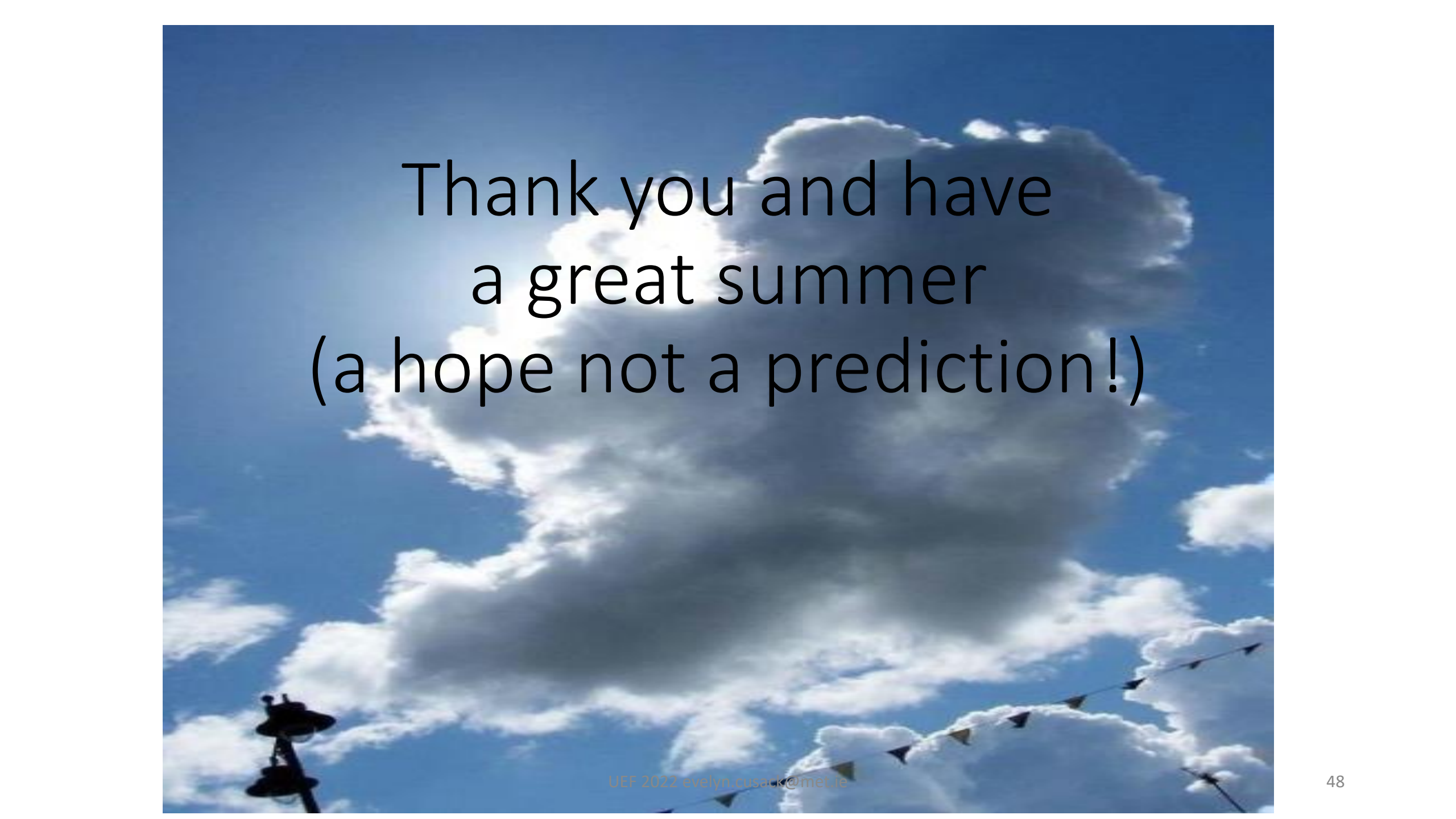


ENS Meteogram
Dublin 53.35°N 6.45°W (ENS land point) 67 m
Forecast based on ENS distribution Thursday 9 June 2022 00 UTC



2022

47



Thank you and have
a great summer
(a hope not a prediction!)