

ECMWF – DESTINATION EARTH

WORLD CAFÉ - INTRODUCTION

Workshop DestinE supporting EUCRA-2

Bonn, September 8-9, 2025



European Environment Agency

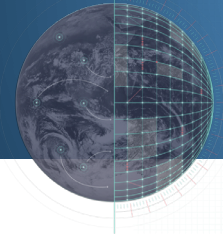


Funded by
the European Union

Destination Earth

implemented by

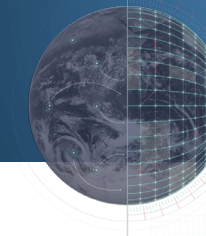




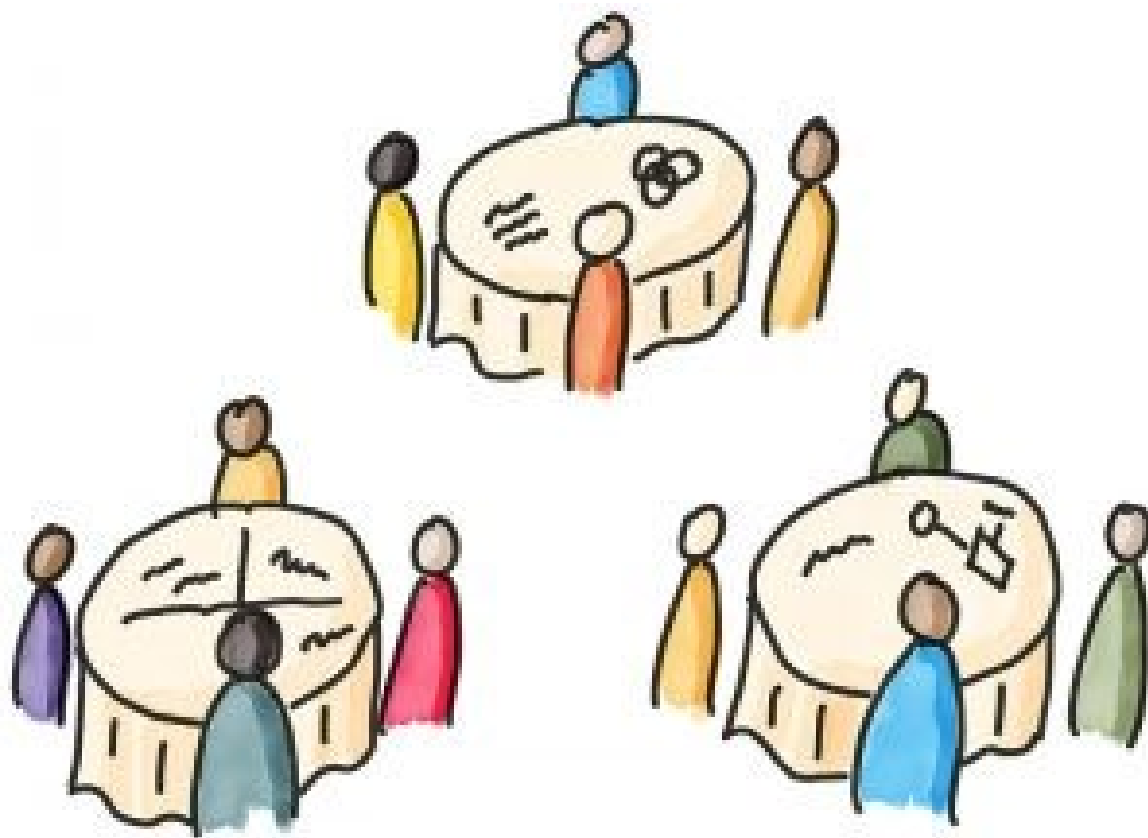
Objectives of the session

- Develop concrete suggestions of where and how DestinE activities could/should support climate risk assessments;
- Identify mature opportunities as well as development needs;
- Highlight areas of added value;
- Gap analysis – knowing what will not work.





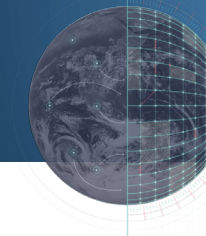
World Café



- **5 “tables”** on different topics

- Water resources
- Energy sector
- Food production and food security
- Human health
- Risk in the financial sector

- **5 rounds** (~15 minutes)
 - please move around!



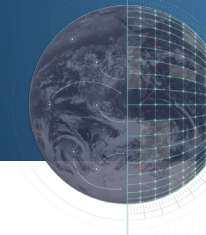
Role of the “table hosts”

Table hosts ...

- ... Double moderation, one thematic/EUCRA host and one DestinE host;
- ... Welcome “travellers” to a table;
- ... Introduce key insights of previous discussion;
- ... Remind participants to jot down ideas on white boards;
- ... Invite everyone to contribute.

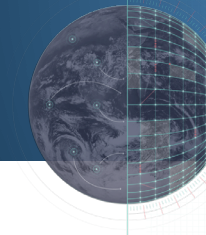
... after the discussion

- ... Consolidate the inputs from the white boards;
- ... Present consolidated inputs during session 4, 2nd day.
- ... Summarize the outcomes for Session 5, 2nd day.



Discussion questions (1/4)

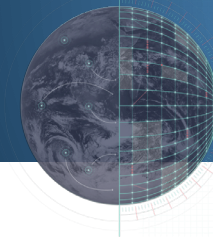
- Which relevant climate variables/indices/hazards can be simulated?
- Which specific climate-related risks (incl. those from EUCRA-1) can be simulated?
- How quantitative can this realistically be? At what spatial aggregation?
- How mature is this? (The final and quality-controlled results and data to be used in EUCRA need to be ready within two years, i.e. by Q3/2027).
- Which scenarios (RCP/SSP/Global Warming Levels) can be simulated?



Discussion questions (2/4)

Climate hazards

- Which types of model ensembles can be run to support probabilistic assessments?
- How can 'tail risks' and systematic biases of current climate models ('model blindspots') be considered? Through physical climate risk storylines?
- Can relevant compound hazards be simulated? Which ones? How?
- What is the best available granularity we can expect (spatial resolution)?
- Can we expect spatially aggregated data (e.g. NUTS3)?



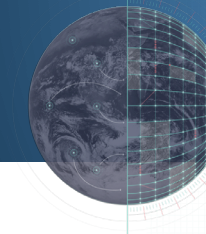
Discussion questions (3/4)

Exposure

- Is relevant data on exposure (e.g. population, ecosystems, buildings, infrastructure) readily available on the necessary granularity (e.g. NUTS3)?
- Which future changes in exposure can be simulated/modelled?

Vulnerability

- Is relevant data on vulnerability readily available? If not, which data would be needed?
- Can vulnerability be dynamically simulated by relevant sector models?
- Which factors influence changes in vulnerability over time?



Discussion questions (4/4)

Adaptation actions:

- Which adaptation actions and pathways can be considered in the simulations?
- Will information on costs of actions be available?

Policy relevance:

- Which new insights for adaptation decision-making can be expected from the simulations?
- Which high-level messages for European policymakers could the simulations support?