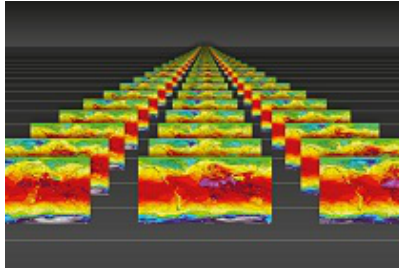


Workshop on Predictability, dynamics and applications research using the TIGGE and S2S ensembles



Contribution ID: 99

Type: **Oral presentation**

The technical development of the TIGGE and S2S databases

Wednesday, 3 April 2019 09:00 (25 minutes)

The TIGGE database consists of medium-range ensemble forecasts from eleven global NWP centres up to 15 days ahead. It started in October 2006 and it has currently reached 3 PiB of data. The S2S database consists of real-time and reforecast outputs from eleven global models producing sub-seasonal to seasonal forecasts up to 60 days ahead. Although the S2S database was established only in 2015, it has already attracted more than one thousand users who have downloaded more than 400 TiB of data.

This presentation will focus on the technical aspects related to both databases, from their design and development to routine daily operations. It will be shown that good data design, user friendly interfaces and efficient ways to deliver the data are necessary for success of similar. Last but not least it will be stressed the importance of the effective long term cooperation with all stakeholders, providing routinely their model outputs, filling gaps when necessary and allowing for the evolution of the models in changing operational environment.

Primary author: FUENTES, Manuel (ECMWF)

Presenter: FUENTES, Manuel (ECMWF)

Session Classification: Database Technical Development

Track Classification: Workshop on Predictability, dynamics and applications research using the TIGGE and S2S ensembles