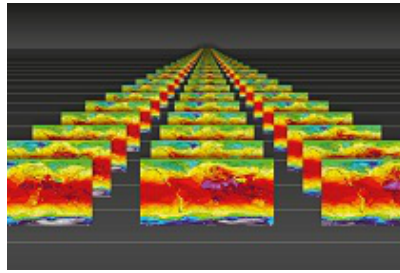


## Workshop on Predictability, dynamics and applications research using the TIGGE and S2S ensembles



Contribution ID: 105

Type: **Oral presentation**

### **Quantifying and attributing predictable signals on sub-seasonal timescales**

*Thursday, 4 April 2019 12:00 (30 minutes)*

As a user of subseasonal weather forecasts we are particularly interested in quantifying and attributing drivers of enhanced sub seasonal predictability. Here we will discuss methods we have developed to address this question including various approaches to quantify both the signal but also systematic model errors in processes such as regime transitions and tropical-extratropical teleconnections via analysis from empirical models and modelling experiments involving tropical relaxation.

**Primary author:** ROWLANDS, Dan (Citadel)

**Presenter:** ROWLANDS, Dan (Citadel)

**Session Classification:** Application studies

**Track Classification:** Workshop on Predictability, dynamics and applications research using the TIGGE and S2S ensembles